

FORSYTH, MONTANA

AL-6216 (FAA)

25163

WAAS CH 78125 W27A	APP CRS 268°	Rwy Ldg TDZE Apt Elev	4799 2728 2729
--	------------------------	-----------------------------	---

RNAV (GPS) RWY 27

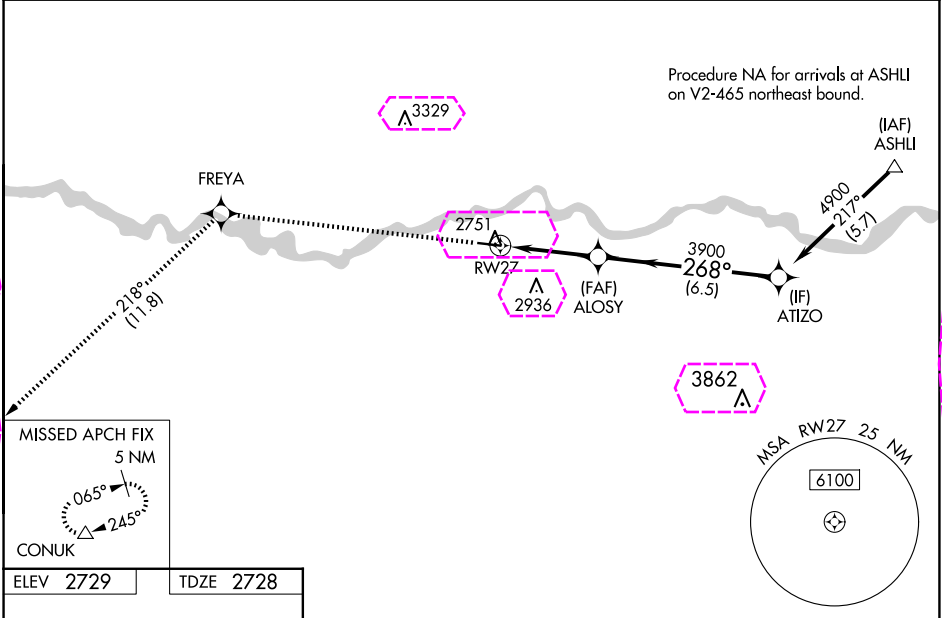
TILLITT FLD (1S3)

NA

For uncompensated Baro-VNAV systems, LNAV/VNAV NA below -20°C (-4°F) or above 53°C (128°F). DME/DME RNP-0.3 NA. Helicopter visibility reduction below ¾ SM NA. When local altimeter setting not received, use Miles City altimeter setting: increase LPV and LNAV/VNAV DA to 3066 and all visibilities ½ mile. Increase all MDA 100 feet and all Cat C and D visibilities ¼ mile. VDP and Baro-VNAV NA when using Miles City altimeter setting.

MISSED APPROACH: Climb to 6000 direct FREYA and on track 218° to CONUK and hold.

AWOS-AV 122.8	SALT LAKE CENTER 126.85 305.2	UNICOM 122.8 (CTAF)
-------------------------	---	-------------------------------



ELEV 2729	TDZE 2728	6000	FREYA	tr 218°	CONUK	VGSI and RNAV glidepath not coincident (VGSI Angle 3.00/TCH 29).	ATIZO
		*LNAV only		*0.9 NM to RWY 27		ALOSY	
		RWY 27		3900		3900	
		0.9 NM		2.6 NM		6.5 NM	
		4799 X 75		268°		4900	
		GP 3.00° TCH 51					
		CATEGORY		A		B	
		LPV DA		2978-1		250 (300-1)	
		LNAV/VNAV DA		2978-1		250 (300-1)	
		LNAV MDA		3040-1		312 (400-1)	
		CIRCLING		3160-1 431 (500-1)		3320-1 591 (600-1)	
				3340-1 611 (700-1¾)		3700-3 971 (1000-3)	

FORSYTH, MONTANA
Amdt 2 26MAY16

46°16'N-106°37'W

RNAV (GPS) RWY 27

TILLITT FLD (1S3)

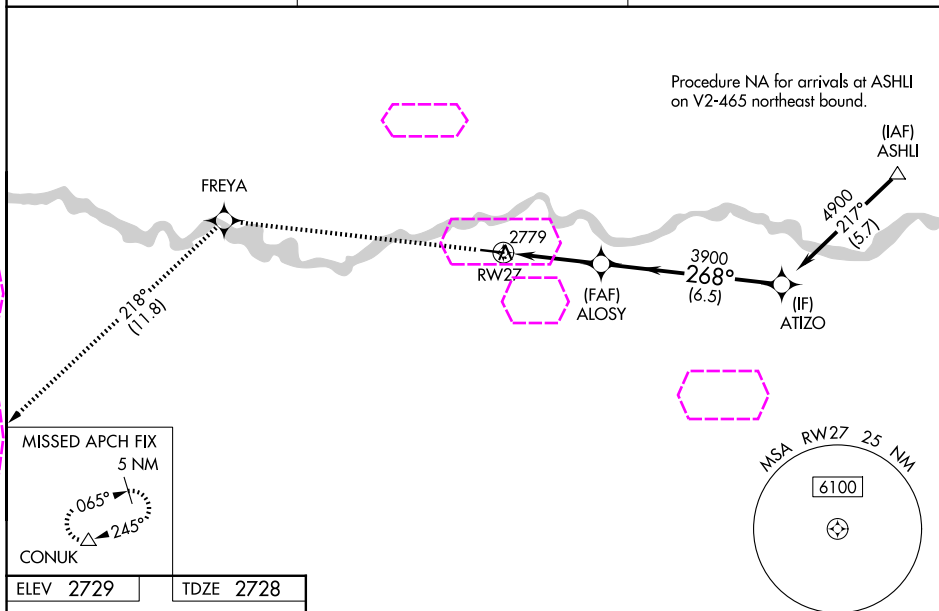
NW-1, 10 JUL 2025 to 07 AUG 2025

NW-1, 10 JUL 2025 to 07 AUG 2025

RNAV (GPS) RWY 27
TULITT FLD (1S3)

MISSED APPROACH: Climb to 6000 direct FREYA and on track 218° to CONUK and hold.

UNICOM
122.8 (CTAF) **L**



ELEV 2729	TDZE 2728
-----------	-----------

