

WAAS CH 62834 W09A	APP CRS 092°	Rwy Idg 5000 TDZE 856 Apt Elev 861
--	------------------------	---

RNAV (GPS) RWY 9

FRANKFORT CLINTON COUNTY RGNL (FKR)

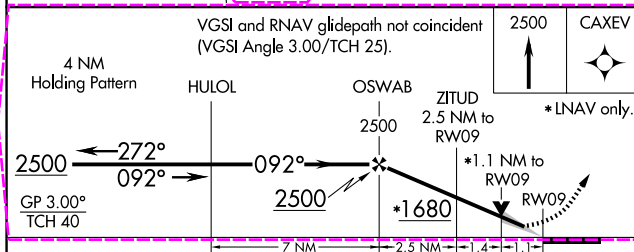
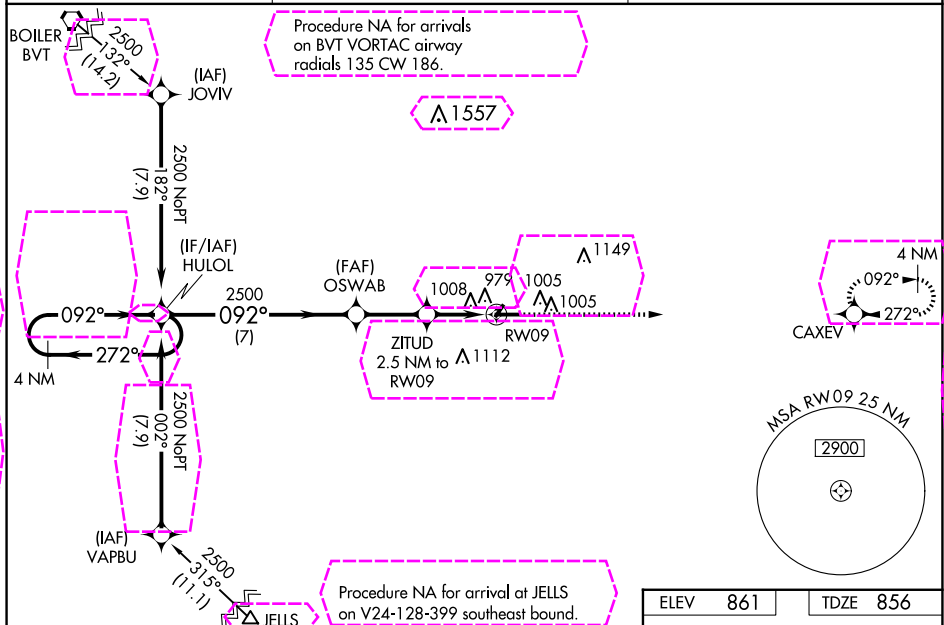
▼ Baro-VNAV NA when using Indianapolis Exec altimeter setting. For uncompensated Baro-VNAV systems, LNAV/VNAV NA below -16°C (4°F) or above 54°C (130°F). DME/DME RNP-0.3 NA.

▲ VDP NA with Indianapolis Exec altimeter setting. When local altimeter setting not received, use Indianapolis Exec altimeter setting: increase LPV DA to 1162 feet and visibility $\frac{1}{8}$ SM all Cats; increase LNAV/VNAV DA to 1245 feet and visibility $\frac{1}{8}$ SM all Cats; increase all MDAs 60 feet and LNAV and Circling Cats C/D visibilities $\frac{1}{4}$ SM.

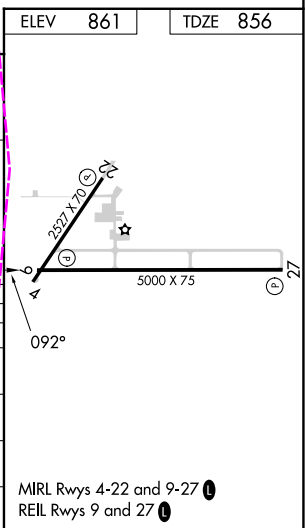
MISSED APPROACH:
Climb to 2500 direct
CAXEV and hold.

AWOS-3
124.325

GRISSOM APP CON ★
123.85 291.675

UNICOM
123.0 (CTAF) **L**

CATEGORY	A	B	C	D
LPV DA	1106- $\frac{7}{8}$ 250 (300- $\frac{7}{8}$)			
LNAV/ VNAV DA	1189-1 333 (400-1)			
LNAV MDA	1260-1 404 (400-1)		1260-1 $\frac{1}{8}$ 404 (400-1 $\frac{1}{8}$)	
C CIRCLING	1460-1 599 (600-1)		1520-1 $\frac{3}{4}$ 659 (700-1 $\frac{3}{4}$)	1520-2 659 (700-2)



WAAS CH 62834 W09A	APP CRS 092°	Rwy Ldg TDZE Apt Elev	5000 856 861
--	------------------------	-----------------------------	---

RNAV (GPS) RWY 9

FRANKFORT CLINTON COUNTY RGNL (FKR)

RNP APCH - GPS.

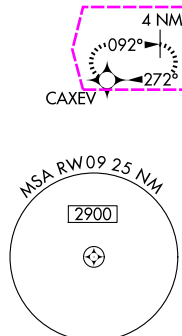
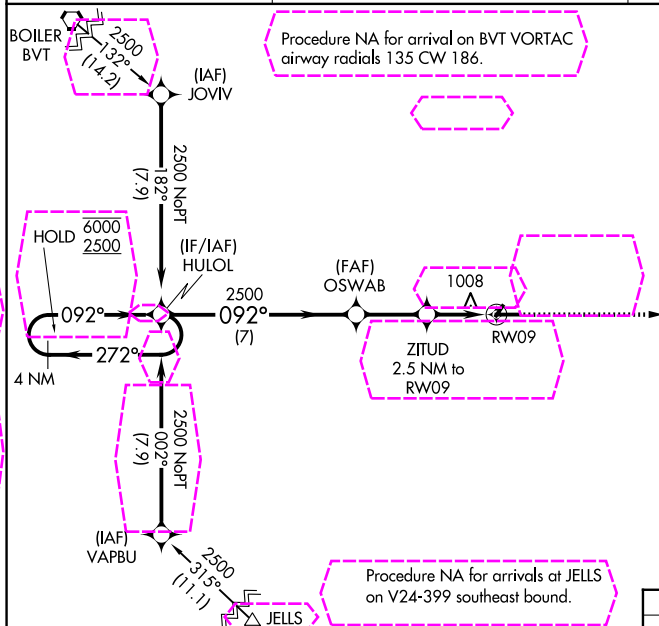
T Baro-VNAV and VDP NA when using TYQ altimeter setting. For uncompensated Baro-VNAV systems, LNAV/VNAV NA below -16°C or above 54°C. Circling Rwy 4, 22 NA at night.

A When local altimeter setting not received, use TYQ altimeter setting: increase LPV DA to 1162 feet and LNAV/VNAV DA to 1245 feet and all MDAs 60 feet; increase LPV and LNAV/VNAV all Cots visibilities $\frac{1}{2}$ SM and LNAV and Circling Cots C/D visibilities $\frac{1}{4}$ SM.

MISSED APPROACH:
Climb to 2500 direct
CAXEV and hold.

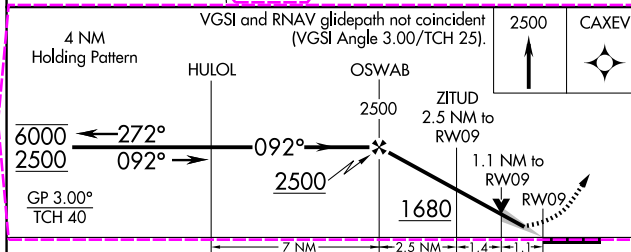
AWOS-3
124.325

GRISSOM APP CON ★
123.85 291.675

UNICOM
123.0 (CTAF) **L**

Procedure NA for arrivals at J
on V24-399 southeast bound

ELEV	861		TDZE	856
------	-----	--	------	-----



CATEGORY	A	B	C	D
LPV DA	1106-7 ₈ 250 (300-7 ₈)			
LNAV/VNAV DA	1189-1 333 (400-1)			
LNAV MDA	1260-1 404 (400-1)	1260-1 ₈ 404 (400-1 ₈)		
CIRCLING	1460-1 599 (600-1)	1520-1 ₄ 659 (700-1 ₄)	1520-2 659 (700-2)	

MIRL Rwy 4-22 and 9-27 **L**
REIL Rwy 9 and 27 **L**

FRANKFORT, INDIANA
Amdt 1C 07AUG25

FRANKFORT CLINTON COUNTY RGNL (FKR)
RNAV (GPS) RWY 9

40°16'N-86°34'W