

FRANKFORT, INDIANA

AL-6194 (FAA)

23278

WAAS CH 65734 W27A	APP CRS 272°	Rwy Idg TDZE Apt Elev	5000 861 861
--	------------------------	-----------------------------	---

RNAV (GPS) RWY 27

FRANKFORT CLINTON COUNTY RGNL (F.K.R.)

RNP APCH - GPS.

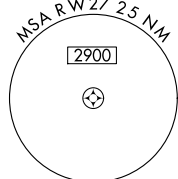
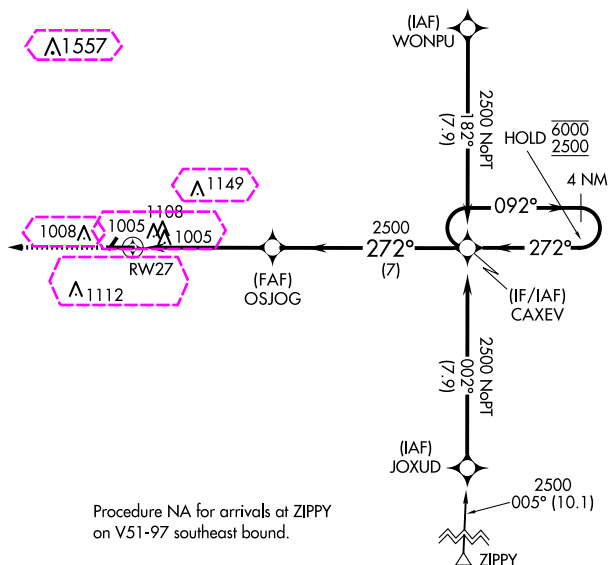
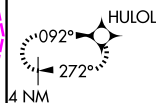
- V** Circling Rwy 4, 22 NA at night. For uncompensated Baro-VNAV systems, LNAV/VNAV NA below -16°C or above 54°C.
- A**

MISSED APPROACH:
Climb to 2500 direct
HULOL and hold.

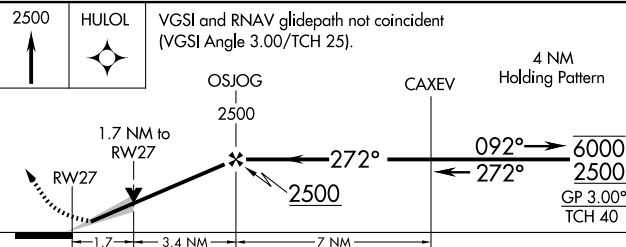
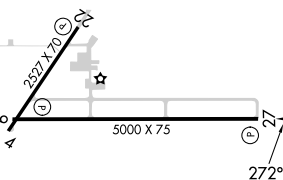
AWOS-3
124.325

GRISSOM APP CON ★
123.85 291.675

UNICOM
123.0 (CTAF) 0

**A1557**

ELEV **861** TDZE **861**



CATEGORY	A	B	C	D
LPV DA	1111-3/4 250 (300-3/4)			
LNAV/VNAV DA	1476-13/4 615 (700-13/4)			
LNAV MDA	1420-1	559 (600-1)	1420-1 5/8	559 (600-1 5/8)
CIRCLING	1460-1	599 (600-1)	1520-1 3/4 659 (700-1 3/4)	1520-2 659 (700-2)

MIRL Rwy 9-27 and 4-22 **0**
REIL Rwy 9 and 27 **0**

FRANKFORT, INDIANA
Amdt 1B 19MAY22

FRANKFORT CLINTON COUNTY RGNL (F.K.R.)
40°16'N-86°34'W
RNAV (GPS) RWY 27

EC-2, 10 JUL 2025 to 07 AUG 2025

EC-2, 10 JUL 2025 to 07 AUG 2025

FRANKFORT, INDIANA

AL-6194 (FAA)

25219

WAAS CH 65734 W27A	APP CRS 272°	Rwy Ldg TDZE 861 Apt Elev 861	5000
--	------------------------	---	-------------

RNAV (GPS) RWY 27

FRANKFORT CLINTON COUNTY RGNL (F'KR)

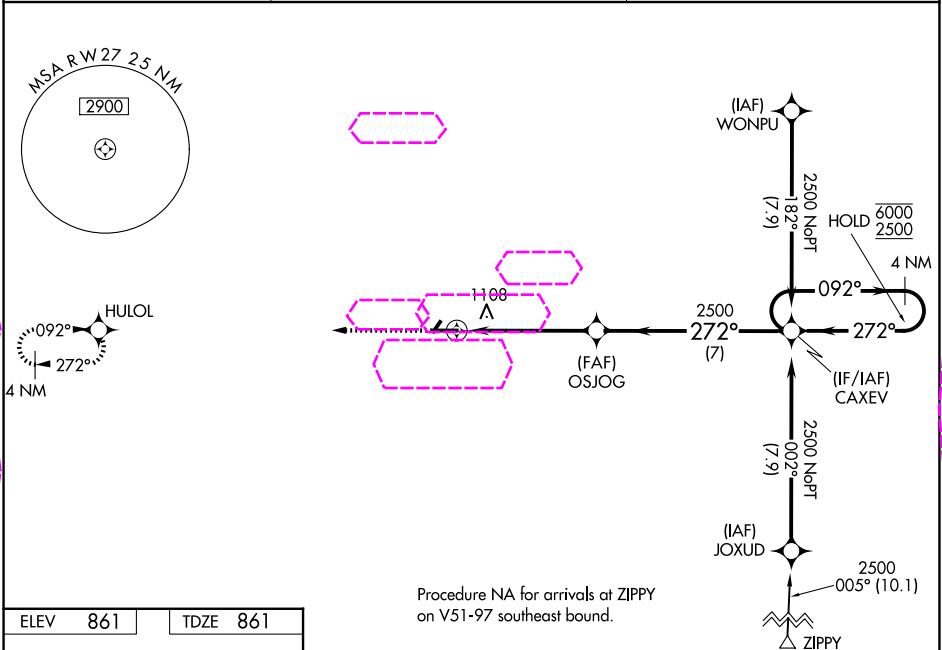
RNP APCH - GPS.

⚠

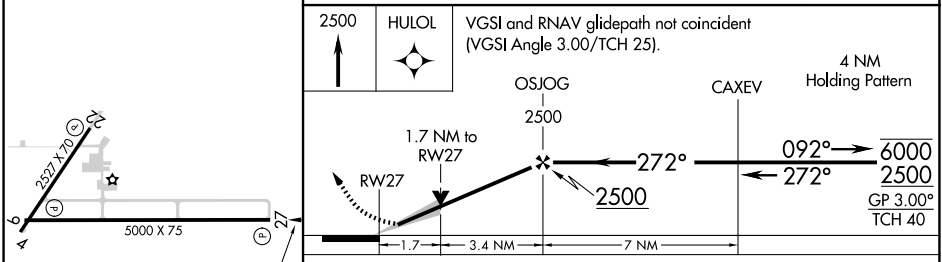
Circling Rwy 4, 22 NA at night. For uncompensated Baro-VNAV systems, LNAV/VNAV NA below -16°C or above 54°C.

MISSED APPROACH:
Climb to 2500 direct HULOL and hold.

AWOS-3 124.325	GRISOM APP CON ★ 123.85 291.675	UNICOM 123.0 (CTAF) 0
--------------------------	---	---------------------------------



ELEV 861	TDZE 861
----------	----------



CATEGORY	A	B	C	D
LPV DA	1111-3/4 250 (300-3/4)			
LNAV/VNAV DA	1476-13/4 615 (700-13/4)			
LNAV MDA	1420-1	559 (600-1)	1420-1 5/8	559 (600-1 5/8)
CIRCLING	1460-1	599 (600-1)	1520-1 3/4 659 (700-1 3/4)	1520-2 659 (700-2)

FRANKFORT, INDIANA
Amdt 1B 19MAY22

FRANKFORT CLINTON COUNTY RGNL (F'KR)
40°16'N-86°34'W
RNAV (GPS) RWY 27

EC-2, 07 AUG 2025 to 04 SEP 2025

EC-2, 07 AUG 2025 to 04 SEP 2025