

BELOIT, WISCONSIN

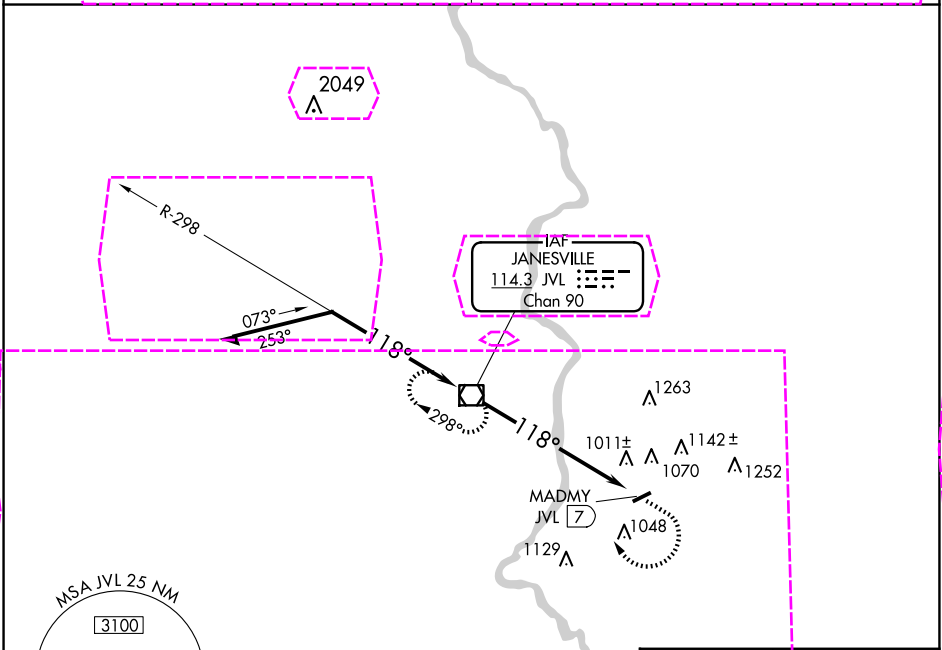
AL-6180 (FAA)

23222

VOR/DME JVL	APP CRS	Rwy Idg	N/A
114.3	118°	TDZE	N/A
Chan 90		Apt Elev	817

VOR-A  
BELOIT (44C)

▼ ▲ NA	Use Janesville altimeter setting, when not received, use Chicago/Rockford Intl altimeter setting.	MISSED APPROACH: Climb to 2700 then right turn direct JVL VOR/DME and hold.
ROCKFORD APP CON 121.0 327.0		UNICOM 122.7 (CTAF) 0



ELEV 817			
JVL VOR/DME			
2700			
118°			
2700			
MADMY JVL 7			
7 NM			
CATEGORY	A	B	D
CIRCLING	1440-1 623 (700-1)	1540-1 723 (800-1)	NA
CHICAGO/ROCKFORD INTL ALTIMETER SETTING MINIMUMS			
CIRCLING	1480-1 663 (700-1)	1580-1 763 (800-1)	NA
LIRL Rwy 7-25 0			
FAF to MAP 7 NM			
Knots	60	90	120 150 180
Min:Sec	7:00	4:40	3:30 2:48 2:20

BELOIT, WISCONSIN  
Am dt 5D 25MAR21

42°30'N-88°58'W

BELOIT (44C)  
VOR-A

EC-3, 10 JUL 2025 to 07 AUG 2025

EC-3, 10 JUL 2025 to 07 AUG 2025

