

DELANO, CALIFORNIA

AL-6173 (FAA)

24193

|   |                        |   |
|---|------------------------|---|
| VORTAC EHF<br><b>115.4</b><br>Chan <b>101</b> | APP CRS<br><b>322°</b> | Rwy Idg <b>5659</b><br>TDZE <b>315</b><br>Apt Elev <b>316</b> |
|---|------------------------|---|

# VOR RWY 33

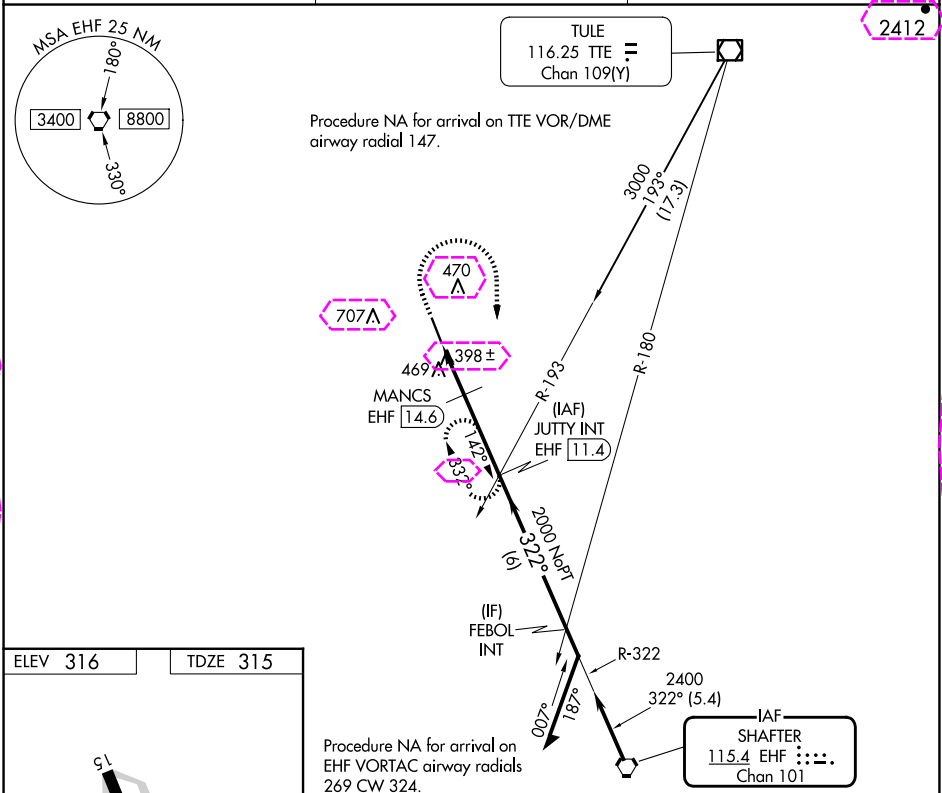
DELANO MUNI (DLO)

DME required.

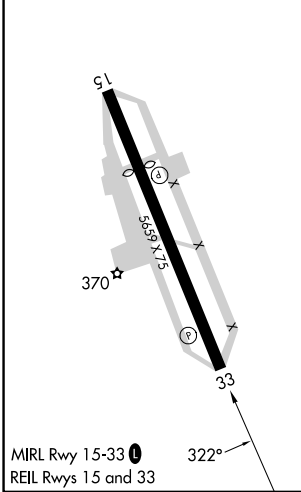
⚠ Circling NA southwest of Rwy 15-33.  
⚠ When local altimeter setting not received, procedure NA.

MISSED APPROACH: Climb to 1200 then climbing right turn to 2400 on EHF VORTAC R-322 to JUTTY INT/EHF 11.4 DME and hold. Continue climb-in-hold to 2400.

|                          |                                       |                                 |
|--------------------------|---------------------------------------|---------------------------------|
| AWOS-3P<br><b>119.55</b> | BAKERSFIELD APP CON ★<br><b>118.9</b> | UNICOM<br><b>122.8</b> (CTAF) 0 |
|--------------------------|---------------------------------------|---------------------------------|



|          |          |
|----------|----------|
| ELEV 316 | TDZE 315 |
|----------|----------|



|          |                |             |                    |   |
|----------|----------------|-------------|--------------------|---|
| 1200     | 2400           | JUTTY INT   | JUTTY INT EHF 11.4 | VGSI and descent angles not coincident. |
| ↑        | EHF R-322      |             |                    | Remain within 10 NM                     |
|          | MANCS EHF 14.6 | EHF 16.6    | 3.00° TCH 40       | 142°                                    |
|          | 1000           | 2000        | 2400               | 322°                                    |
|          | 2 NM           | 3.1 NM      | 6 NM               |   |
| CATEGORY | A              | B           | C                  | D                                       |
| S-33     | 860-1          | 545 (600-1) | 860-1½             | 545 (600-1½)                            |
| CIRCLING | 860-1          | 544 (600-1) | 860-1½             | 960-2                                   |
|          |                |             | 544 (600-1½)       | 644 (700-2)                             |

DELANO, CALIFORNIA  
Amdt 9 11JUL24

35°45'N-119°14'W

DELANO MUNI (DLO)  
VOR RWY 33

SW-3, 10 JUL 2025 to 07 AUG 2025

SW-3, 10 JUL 2025 to 07 AUG 2025

25219

|  |                        |   |
|--|------------------------|---|
| VORTAC EHF<br><b>115.4</b><br>Chn <b>101</b> | APP CRS<br><b>322°</b> | Rwy Ldg <b>5659</b><br>TDZE <b>315</b><br>Apt Elev <b>316</b> |
|--|------------------------|---|

VOR RWY 33  
DELANO MUNI (DLO)

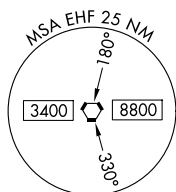
DME required.

**T** Circling NA southwest of Rwy 15-33.  
**A** When local altimeter setting not received, procedure NA.

**MISSED APPROACH:** Climb to 1200 then climbing right turn to 2400 on EHF VORTAC R-322 to JUTTY INT/EHF 11.4 DME and hold. Continue climb-in-hold to 2400.

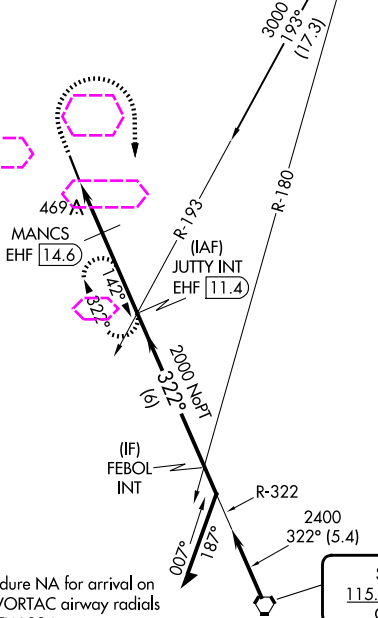
AWOS-3P  
**119.55**

BAKERSFIELD APP CON ★  
118.9

UNICOM  
122.8 (CTAF) **L**

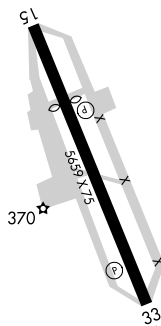
116.25 TTE =  
Chap 108(Y)

Procedure NA for arrival on TTE VOR/DME  
airway radial 147.

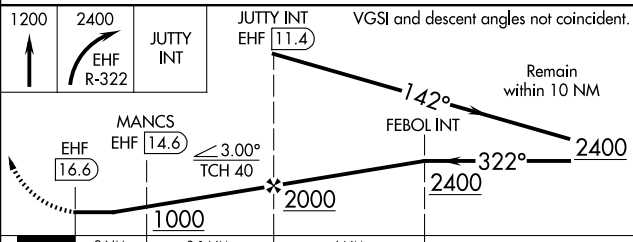


Procedure NA for arrival on  
EHF VORTAC airway radials  
269 CW 324.

SHAFTER  
115.4 EHF ::::.  
Chan 101



MIRL Rwy 15-33 **L**  
REIL Rwy 15 and 33



| CATEGORY | A                 | B | C  | D                 |
|----------|-------------------|---|--|-------------------|
| S-33     | 860-1 545 (600-1) |   | 860-1 $\frac{5}{8}$ 545 (600-1 $\frac{5}{8}$ ) |                   |
| CIRCLING | 860-1 544 (600-1) |   | 860-1 $\frac{5}{8}$ 544 (600-1 $\frac{5}{8}$ ) | 960-2 644 (700-2) |

DELANO, CALIFORNIA  
Amdt 9 11JUL24

35°45'N-119°14'W

DELANO MUNI (DLO)  
VOR RWY 33

SW-3, 07 AUG 2025 to 04 SEP 2025

SW-3, 07 AUG 2025 to 04 SEP 2025