

APP CRS	Rwy Idg	5659
324°	TDZE	315
	Apt Elev	316

RNAV (GPS) RWY 33
DELANO MUNI (DLO)

RNP APCH - GPS.

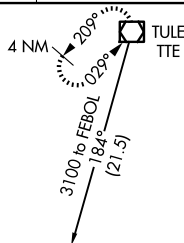
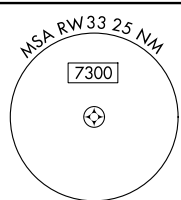
T Circling NA southwest of Rwy 15-33.
A When local altimeter setting not received, procedure NA.

MISSED APPROACH: Climb to 800 then climbing right turn to 3100 direct TTE VOR/DME and hold.

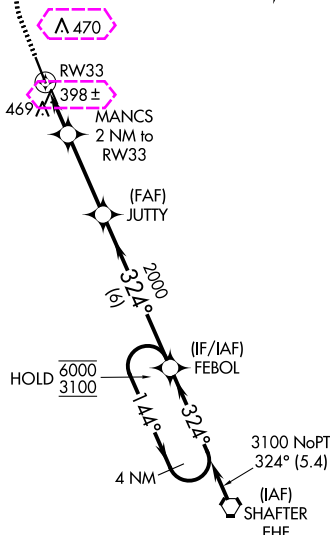
AWOS-3P
119,55

BAKERSFIELD APP CON ★
118.9

UNICOM
122.8 (CTAF) **L**

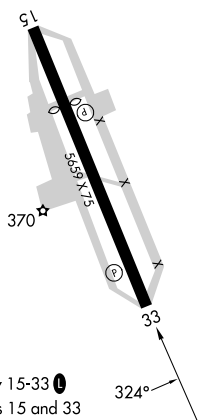


Final approach course offset 2.19°.

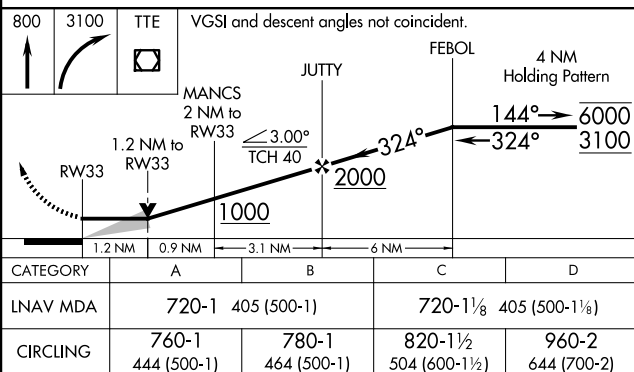


COREZ \triangle $\xrightarrow[3100]{076^\circ}$

ELEV 316		TDZE 315
----------	--	----------



MIRL Rwy 15-33 **L**
REIL Rwy 15 and 33



DELANO, CALIFORNIA
Amdt 2 11JUL24

35°45'N-119°14'W

DELANO MUNI (DLO)
RNAV (GPS) RWY 33

SW-3, 10 JUL 2025 to 07 AUG 2025

SW-3, 10 JUL 2025 to 07 AUG 2025

DELANO, CALIFORNIA

AL-6173 (FAA)

25219

APP CRS 324°	Rwy Ldg 5659
	TDZE 315
	Apt Elev 316

RNAV (GPS) RWY 33

DELANO MUNI (DLO)

RNP APCH - GPS.

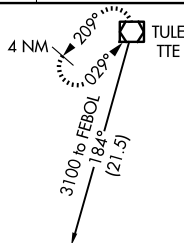
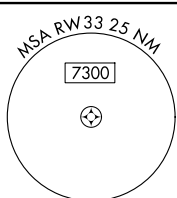
⚠ Circling NA southwest of Rwy 15-33.
⚠ When local altimeter setting not received, procedure NA.

MISSED APPROACH: Climb to 800 then climbing right turn to 3100 direct TTE VOR/DME and hold.

AWOS-3P
119.55

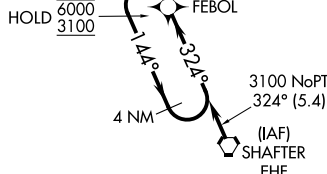
BAKERSFIELD APP CON ★
118.9

UNICOM
122.8 (CTAF) 0

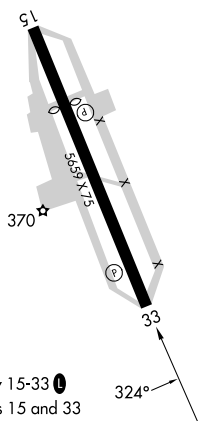


Final approach course offset 2.19°.

COREZ △ → 3100
076°
(16.8)



ELEV 316 TDZE 315



MIRL Rwy 15-33 0
REIL Rwy 15 and 33

800	3100	TTE	VGSi and descent angles not coincident.			
↑	↻	☐	MANCS 2 NM to RW33	JUTTY	FEBOL	4 NM Holding Pattern
↻	↻	↻	1.2 NM to RW33	3.00° TCH 40	324°	144° → 6000 ← 324° 3100
↻	↻	↻	1.2 NM	0.9 NM	3.1 NM	6 NM
CATEGORY	A		B		C	
LNAV MDA	720-1 405 (500-1)		720-1 405 (500-1)		720-1 405 (500-1)	
CIRCLING	760-1 444 (500-1)		780-1 464 (500-1)		820-1 504 (600-1)	
					960-2 644 (700-2)	

DELANO, CALIFORNIA

Amdt 2 11JUL24

35°45'N-119°14'W

DELANO MUNI (DLO)

RNAV (GPS) RWY 33

SW-3, 07 AUG 2025 to 04 SEP 2025

SW-3, 07 AUG 2025 to 04 SEP 2025