

BENTONVILLE, ARKANSAS

AL-6126 (FAA)

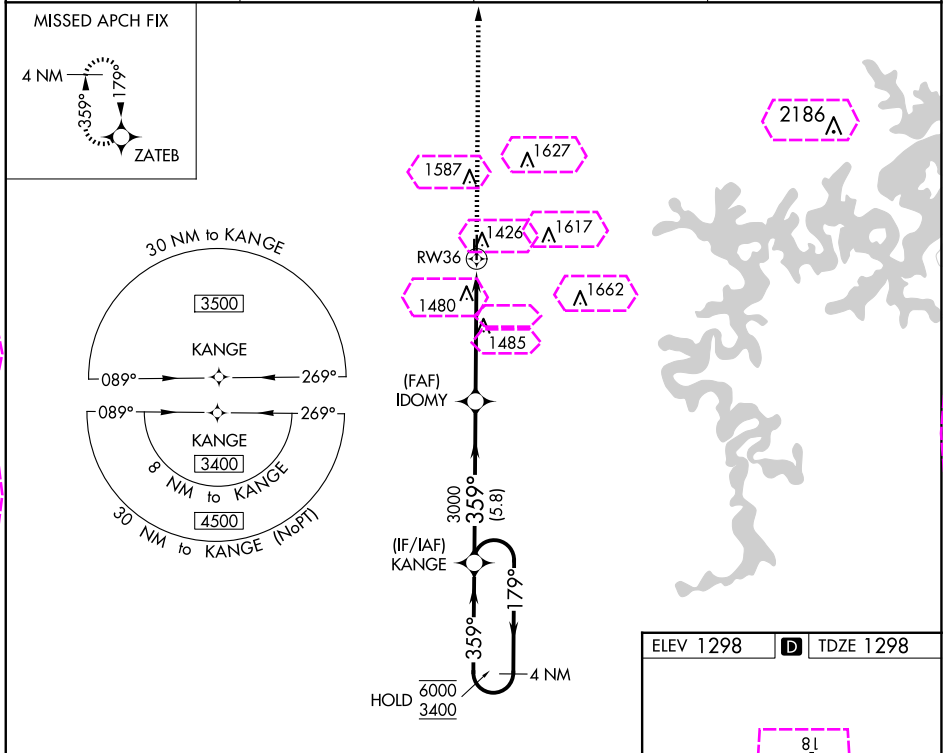
24193

WAAS CH 53729 W36A	APP CRS 359°	Rwy Idg 4196 TDZE 1298 Apt Elev 1298
--	------------------------	---

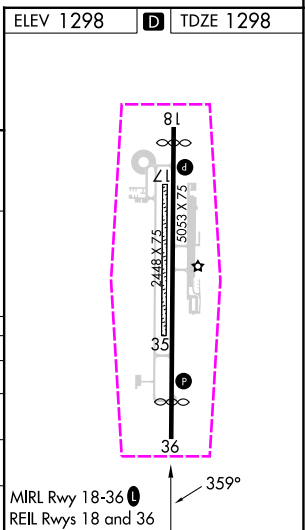
RNAV (GPS) RWY 36

BENTONVILLE MUNI/LOUISE M THADEN FLD (VBT)

RNP APCH. ⚠ Circling NA to Rws 17 and 35. Rwy 36 helicopter visibility reduction below $\frac{3}{4}$ SM NA. For uncompensated Baro-VNAV systems, LNAV/VNAV NA below -17°C or above 54°C.		MISSED APPROACH: Climb to 3200 direct ZATEB and hold.	
AWOS-3PT 134.975	RAZORBACK APP CON ★ 121.0 (WEST) 244.575	CLNC DEL 121.05 263.125	UNICOM 122.975 (CTAF) 0



4 NM Holding Pattern		KANGE		3200 ZATEB	
6000 ← 179°		359° →		359°	
3400		359°		3000	
GP 3.00°		359°		* 1.3 NM to RW36	
TCH 45		3000		RW36	
		5.8 NM		3.9 NM	
		1.3 NM		1.3 NM	
CATEGORY	A	B	C	D	
LPV DA		1548-1	250 (300-1)		
LNAV/VNAV DA		1672-1	374 (400-1)		
LNAV MDA	1780-1	482 (500-1)	1780-1 $\frac{3}{8}$	482 (500-1 $\frac{3}{8}$)	
CIRCLING	1780-1	482 (500-1)	1920-1 $\frac{3}{4}$ 622 (700-1 $\frac{3}{4}$)	1940-2 642 (700-2)	



BENTONVILLE, ARKANSAS

BENTONVILLE MUNI/LOUISE M THADEN FLD (VBT)

Amdt 2B 25FEB21

36°21'N-94°13'W

RNAV (GPS) RWY 36

SC-1, 10 JUL 2025 to 07 AUG 2025

SC-1, 10 JUL 2025 to 07 AUG 2025

BENTONVILLE, ARKANSAS

AL-6126 (FAA)

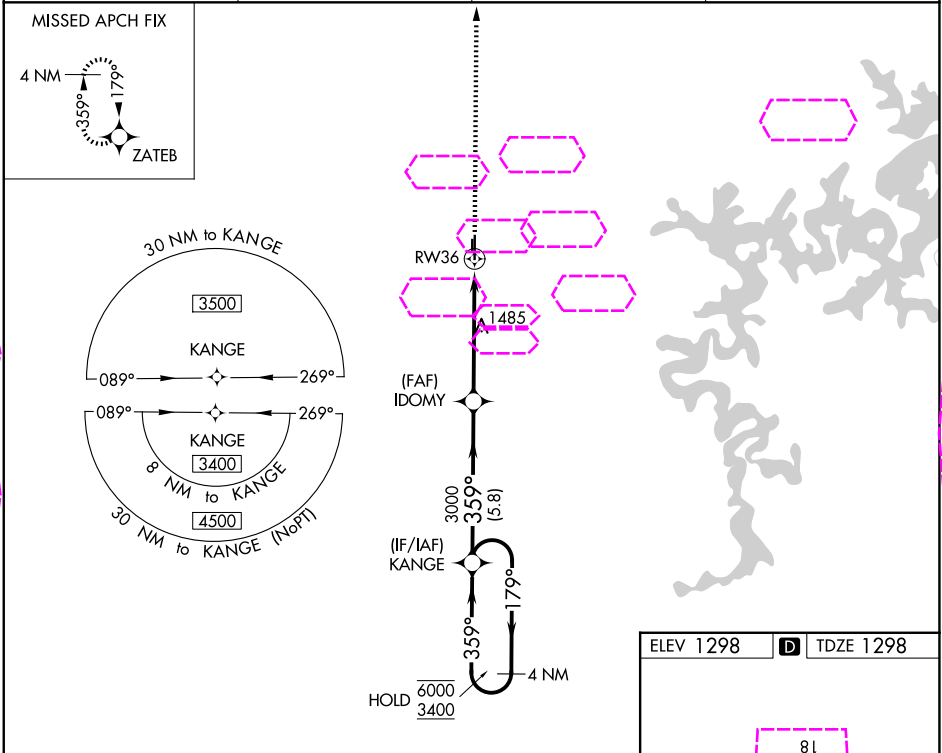
25219

WAAS CH 53729 W36A	APP CRS 359°	Rwy Ldg TDZE 1298 Apt Elev 1298
--	------------------------	---

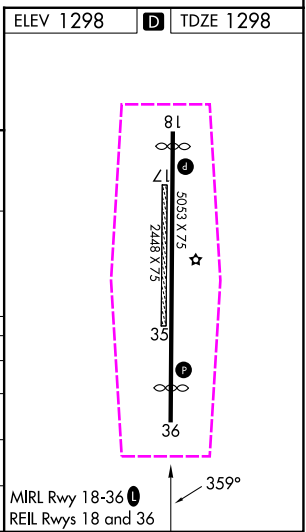
RNAV (GPS) RWY 36

BENTONVILLE MUNI/LOUISE M THADEN FLD (VBT)

RNP APCH. ⚠ Circling NA to Rwy 17 and 35. Rwy 36 helicopter visibility reduction below 3/4 SM NA. For uncompensated Baro-VNAV systems, LNAV/VNAV NA below -17°C or above 54°C.		MISSED APPROACH: Climb to 3200 direct ZATEB and hold.	
AWOS-3PT 134.975	RAZORBACK APP CON ★ 121.0 (WEST) 244.575	CLNC DEL 121.05 263.125	UNICOM 122.975 (CTAF) 0



4 NM Holding Pattern		KANGE		3200		ZATEB
6000 ← 179°		3400 → 359°		3000		3000
GP 3.00°		TCH 45		*1.3 NM to RWY36		*LNAV only.
← 5.8 NM		← 3.9 NM		1.3 NM		
CATEGORY	A	B	C	D		
LPV DA	1548-1		250 (300-1)			
LNAV/VNAV DA	1672-1		374 (400-1)			
LNAV MDA	1780-1	482 (500-1)	1780-1 3/8	482 (500-1 3/8)		
CIRCLING	1780-1	482 (500-1)	1920-1 3/4 622 (700-1 3/4)	1940-2 642 (700-2)		



BENTONVILLE, ARKANSAS

BENTONVILLE MUNI/LOUISE M THADEN FLD (VBT)

Amdt 2B 25FEB21

36°21'N-94°13'W

RNAV (GPS) RWY 36

SC-1, 07 AUG 2025 to 04 SEP 2025

SC-1, 07 AUG 2025 to 04 SEP 2025