

BENTONVILLE, ARKANSAS

AL-6126 (FAA)

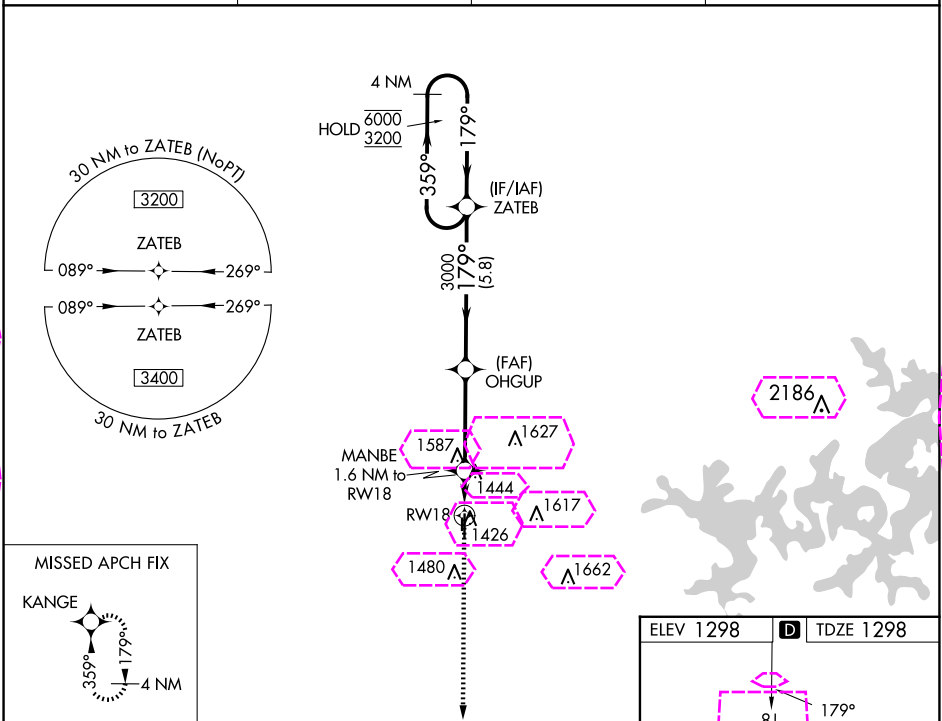
24193

WAAS CH 77830 W18A	APP CRS 179°	Rwy Idg TDZE 1298 Apt Elev 1298
--	------------------------	---

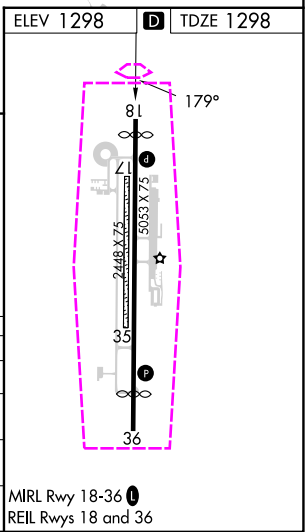
RNAV (GPS) RWY 18

BENTONVILLE MUNI/LOUISE M THADEN FLD (VBT)

RNP APCH.		MISSED APPROACH: Climb to 3400 direct KANGE and hold.	
AWOS-3PT 134.975		CLNC DEL 121.05 263.125	
RAZORBACK APP CON ★ 121.0 (WEST) 244.575		UNICOM 122.975 (CTAF) 0	



3400 ↑ KANGE		OHGUP 3000		ZATEB 4 NM Holding Pattern 6000 3200	
*LNAV only. MANBE 1.6 NM to RW18		179°		359°	
RW18		1900*		3000	
1.6 NM		3.6 NM		5.8 NM	
CATEGORY	A	B	C	D	
LPV DA	1548-1		250 (300-1)		
LNAV/VNAV DA	1688-1½		390 (400-1½)		
LNAV MDA	1700-1	402 (500-1)	1700-1½	402 (500-1½)	
CIRCLING	1780-1	482 (500-1)	1920-1¾ 622 (700-1¾)	1940-2 642 (700-2)	



BENTONVILLE, ARKANSAS

BENTONVILLE MUNI/LOUISE M THADEN FLD (VBT)

Amdt 2A 25FEB21

36°21'N-94°13'W

RNAV (GPS) RWY 18

SC-1, 10 JUL 2025 to 07 AUG 2025

SC-1, 10 JUL 2025 to 07 AUG 2025

BENTONVILLE, ARKANSAS

AL-6126 (FAA)

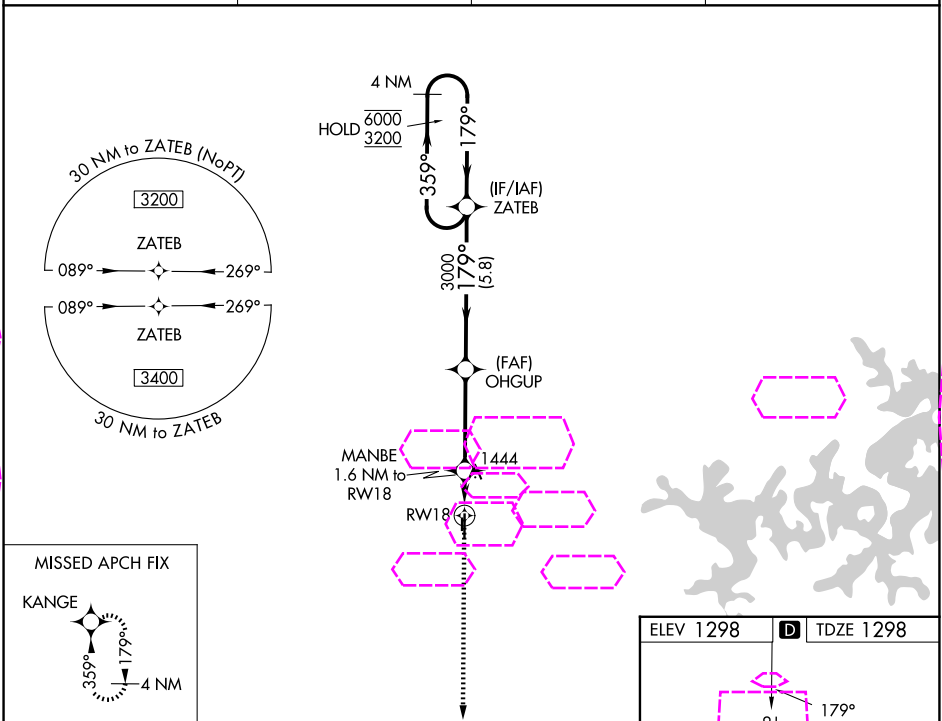
25219

WAAS CH 77830 W18A	APP CRS 179°	Rwy Ldg TDZE 1298 Apt Elev 1298
--	------------------------	---

RNAV (GPS) RWY 18

BENTONVILLE MUNI/LOUISE M THADEN FLD (VBT)

RNP APCH. Circling NA to Rwy 17 and 35. Rwy 18 helicopter visibility reduction below ¾ SM NA. For uncompensated Baro-VNAV systems, LNAV/VNAV NA below -17°C or above 54°C.		MISSED APPROACH: Climb to 3400 direct KANGE and hold.	
AWOS-3PT 134.975	RAZORBACK APP CON ★ 121.0 (WEST) 244.575	CLNC DEL 121.05 263.125	UNICOM 122.975 (CTAF)



3400	KANGE				
*LNAV only. MANBE 1.6 NM to RW18					
OHGUP 3000 179° 359° 6000 3200 179° 3000 1900* 1.6 NM 3.6 NM 5.8 NM					
CATEGORY	A	B	C	D	
LPV DA	1548-1		250 (300-1)		
LNAV/VNAV DA	1688-1½		390 (400-1½)		
LNAV MDA	1700-1	402 (500-1)	1700-1½	402 (500-1½)	
CIRCLING	1780-1	482 (500-1)	1920-1¾ 622 (700-1¾)	1940-2 642 (700-2)	

