

(YODUH1.YODUH) 24025

AL-6114 (FAA)

PLEASANTON MUNI (P'E'Z)

YODUH ONE DEPARTURE (RNAV)

PLEASANTON, TEXAS

RNAV 1 - DME/DME IRU or GPS.

**TOP ALTITUDE:
ASSIGNED BY ATC**

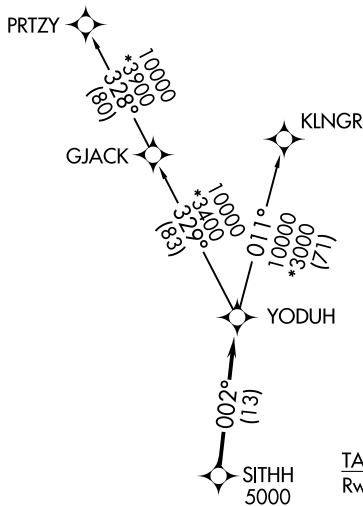
RADAR required.

SAN ANTONIO DEP CON

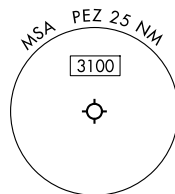
125.7 290.225

CLNC DEL

121.375

**TAKEOFF MINIMUMS**
Rwys 16, 34: Standard.NOTE: Aircraft destined for airports north/northeast of
DFW terminal area must file the KLNGR Transition.

NOTE: Chart not to scale.



DEPARTURE ROUTE DESCRIPTION

TAKEOFF RUNWAY 16: Climb on heading 157° or as assigned by ATC, for vectors to SITHH, thence . . .**TAKEOFF RUNWAY 34:** Climb on heading 337° or as assigned by ATC, for vectors to SITHH, thence . . .

. . . on track 002° to YODUH, then on Transition. Maintain ATC assigned altitude.

KLNGR TRANSITION (YODUH1.KLNGR)**PRTZY TRANSITION (YODUH1.PRTZY)**

YODUH ONE DEPARTURE (RNAV)

(YODUH1.YODUH) 25JAN24

PLEASANTON, TEXAS
PLEASANTON MUNI (P'E'Z)

SC-3, 10 JUL 2025 to 07 AUG 2025

SC-3, 10 JUL 2025 to 07 AUG 2025

(YODUH2.YODUH) 25219

AL-6114 (FAA)

PLEASANTON MUNI (P'E'Z)

PLEASANTON, TEXAS

YODUH TWO DEPARTURE (RNAV)

SAN ANTONIO DEP CON
125.7 290.225
CLNC DEL
121.375

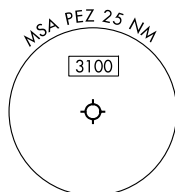
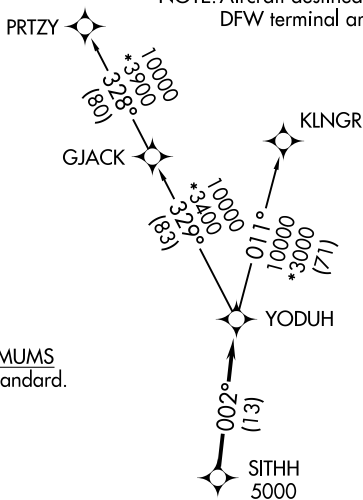
RNAV 1 - DME/DME IRU or GPS.

RADAR required for non-GPS equipped aircraft.
RADAR required.

**TOP ALTITUDE:
ASSIGNED BY ATC**

NOTE: Aircraft destined for airports north/northeast of
DFW terminal area must file the KLNGR Transition.

TAKEOFF MINIMUMS
Rwys 16, 34: Standard.



NOTE: Chart not to scale.

DEPARTURE ROUTE DESCRIPTION

TAKEOFF RUNWAY 16: Climb on heading 157° or as assigned by ATC, for vectors to SITHH, thence. . .

TAKEOFF RUNWAY 34: Climb on heading 337° or as assigned by ATC, for vectors to SITHH, thence. . .

. . .on track 002° to YODUH, then on transition. Maintain ATC assigned altitude.
Expect filed altitude 10 minutes after departure.

KLNGR TRANSITION (YODUH2.KLNGR)
PRTZY TRANSITION (YODUH2.PRTZY)

YODUH TWO DEPARTURE (RNAV)
(YODUH2.YODUH) 07AUG25

PLEASANTON, TEXAS
PLEASANTON MUNI (P'E'Z)

SC-3, 07 AUG 2025 to 04 SEP 2025

SC-3, 07 AUG 2025 to 04 SEP 2025