

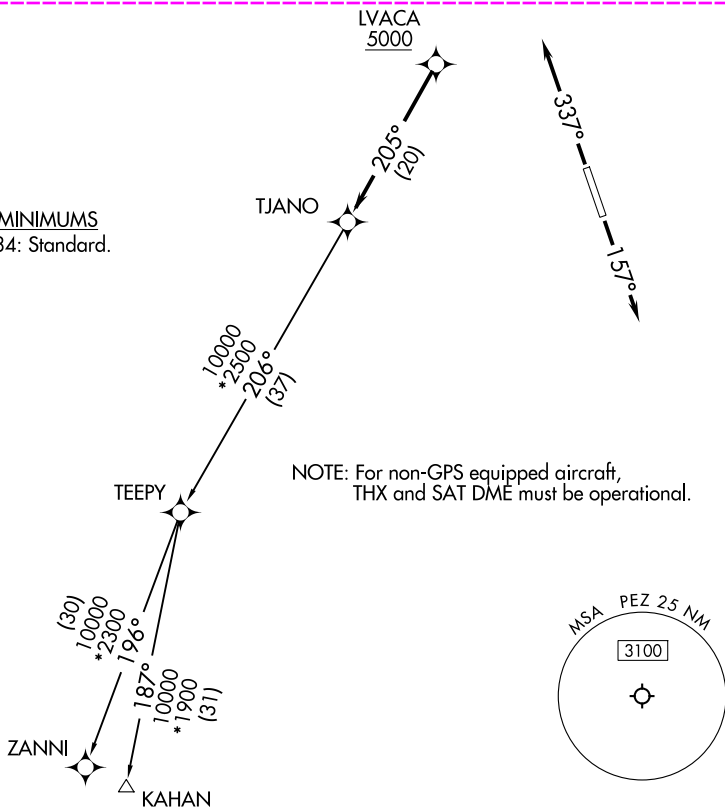
(TJANO1.TJANO) 24025

AL-6114 (FAA)

## TJANO ONE DEPARTURE (RNAV)

PLEASANTON MUNI (PEZ)  
PLEASANTON, TEXASSAN ANTONIO DEP CON  
125.7 290.225  
CLNC DEL  
121.375RNAV 1 - DME/DME IRU or GPS.  
RADAR required.**TOP ALTITUDE:  
ASSIGNED BY ATC**TAKEOFF MINIMUMS

Rwys 16, 34: Standard.



## DEPARTURE ROUTE DESCRIPTION

TAKEOFF RUNWAY 16: Climb on heading 157° or as assigned by ATC, for vectors to LVACA, thence . . . .

TAKEOFF RUNWAY 34: Climb on heading 337° or as assigned by ATC, for vectors to LVACA, thence . . . .

. . . . on track 205° to TJANO, then on Transition. Maintain ATC assigned altitude.

KAHAN TRANSITION (TJANO1.KAHAN)ZANNI TRANSITION (TJANO1.ZANNI)TJANO ONE DEPARTURE (RNAV)  
(TJANO1.TJANO) 25JAN24PLEASANTON, TEXAS  
PLEASANTON MUNI (PEZ)

SC-3, 10 JUL 2025 to 07 AUG 2025

SC-3, 10 JUL 2025 to 07 AUG 2025

(TJANO2.TJANO) 25219

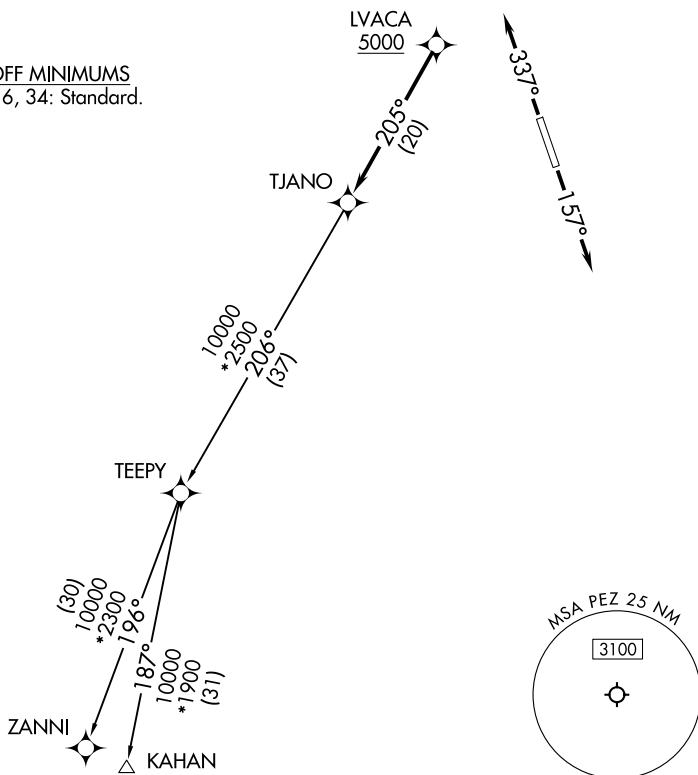
AL-6114 (FAA)

**TJANO TWO DEPARTURE (RNAV)**PLEASANTON MUNI (PEZ)  
PLEASANTON, TEXASSAN ANTONIO DEP CON  
125.7 290.225  
CLNC DEL  
121.375

RNAV 1 - DME/DME IRU or GPS.

RADAR required for non-GPS equipped aircraft.  
RADAR required.**TOP ALTITUDE:  
ASSIGNED BY ATC**TAKEOFF MINIMUMS

Rwys 16, 34: Standard.



NOTE: Chart not to scale.

**DEPARTURE ROUTE DESCRIPTION**TAKEOFF RUNWAY 16: Climb on heading 157° or as assigned by ATC, for vectors to LVACA, thence. . .TAKEOFF RUNWAY 34: Climb on heading 337° or as assigned by ATC, for vectors to LVACA, thence. . .. . .on track 205° to TJANO, then on transition. Maintain ATC assigned altitude.  
Expect filed altitude 10 minutes after departure.KAHAN TRANSITION (TJANO2.KAHAN)ZANNI TRANSITION (TJANO2.ZANNI)**TJANO TWO DEPARTURE (RNAV)**

(TJANO2.TJANO) 07AUG25

PLEASANTON, TEXAS  
PLEASANTON MUNI (PEZ)

SC-3, 07 AUG 2025 to 04 SEP 2025

SC-3, 07 AUG 2025 to 04 SEP 2025