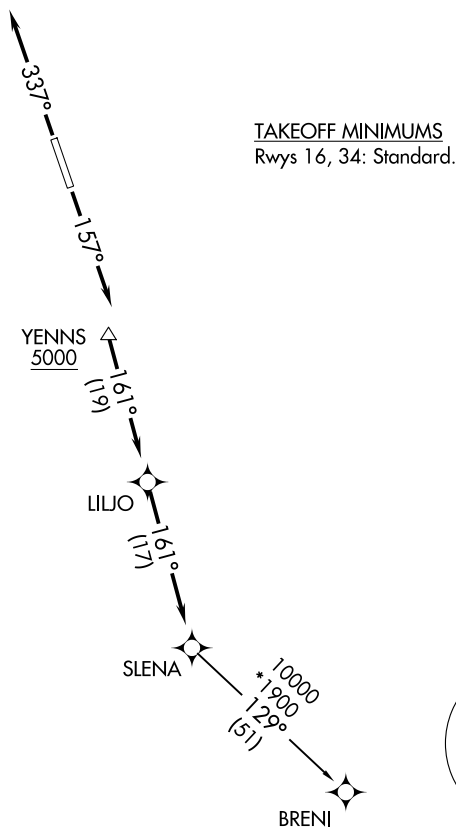


(SLENA1.SLENA) 24025

AL-6114 (FAA)

## SLENA ONE DEPARTURE (RNAV)

PLEASANTON MUNI (P'E/Z)  
PLEASANTON, TEXASSAN ANTONIO DEP CON  
125.7 290.225  
CLNC DEL  
121.375RNAV 1 - DME/DME IRU or GPS.  
RADAR required.**TOP ALTITUDE:  
ASSIGNED BY ATC**

NOTE: Chart not to scale.



## DEPARTURE ROUTE DESCRIPTION

TAKEOFF RUNWAY 16: Climb on heading 157° or as assigned by ATC, for vectors to YENNS, thence . . . .

TAKEOFF RUNWAY 34: Climb on heading 337° or as assigned by ATC, for vectors to YENNS, thence . . . .

. . . . on track 161° to LILJO, then on track 161° to SLENA, then on transition.  
Maintain ATC assigned altitude.

BRENI TRANSITION (SLENA1.BRENI)

## SLENA ONE DEPARTURE (RNAV)

(SLENA1.SLENA) 25JAN24

PLEASANTON, TEXAS  
PLEASANTON MUNI (P'E/Z)

SC-3, 10 JUL 2025 to 07 AUG 2025

SC-3, 10 JUL 2025 to 07 AUG 2025

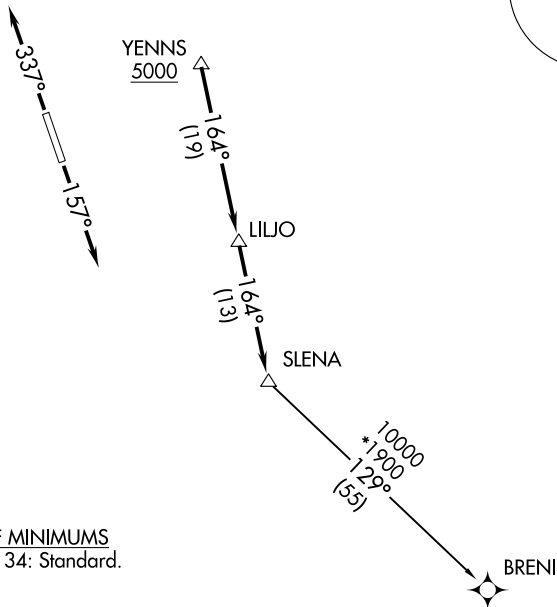
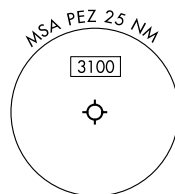
(SLENA2.SLENA) 25219

AL-6114 (FAA)

## SLENA TWO DEPARTURE (RNAV)

PLEASANTON MUNI (P'E/Z)  
PLEASANTON, TEXASSAN ANTONIO DEP CON  
125.7 290.225  
CLNC DEL  
121.375

RNAV 1 - DME/DME/IRU or GPS.

RADAR required for non-GPS equipped aircraft.  
RADAR required.**TOP ALTITUDE:  
ASSIGNED BY ATC**TAKEOFF MINIMUMS  
Rwys 16, 34: Standard.

NOTE: Chart not to scale.

## DEPARTURE ROUTE DESCRIPTION

TAKEOFF RUNWAY 16: Climb on heading 157° or as assigned by ATC, for vectors to YENNS. Thence. . .TAKEOFF RUNWAY 34: Climb on heading 337° or as assigned by ATC, for vectors to YENNS. Thence. . .

. . .on track 164° to LILJO, then on track 164° to SLENA, then on transition. Maintain ATC assigned altitude. Expect filed altitude 10 minutes after departure.

BRENI TRANSITION (SLENA2.BRENI)

SLENA TWO DEPARTURE (RNAV)

(SLENA2.SLENA) 07AUG25

PLEASANTON, TEXAS  
PLEASANTON MUNI (P'E/Z)

SC-3, 07 AUG 2025 to 04 SEP 2025

SC-3, 07 AUG 2025 to 04 SEP 2025