

(ALISS6.ALISS) 24025 AL-6114 (FAA)
ALISS SIX DEPARTURE (RNAV)

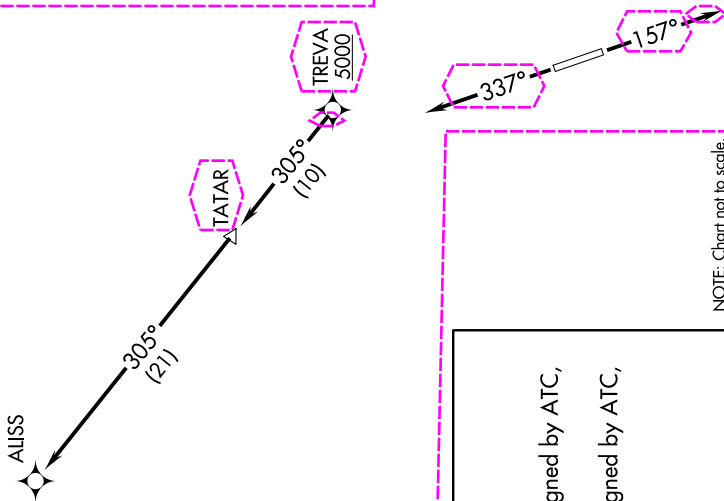
PLEASANTON MUNI (PEZ)
PLEASANTON, TEXAS

SAN ANTONIO DEP CON
125.7 290.225
CUNC DEL
121.375



TOP ALTITUDE:
ASSIGNED BY ATC

RNAV 1 - GPS.
RADAR required.



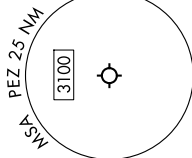
NOTE: Chart not to scale.

DEPARTURE ROUTE DESCRIPTION

TAKEOFF RUNWAY 16: Climb on heading 157° or as assigned by ATC, for vectors to TREVA, thence ...
TAKEOFF RUNWAY 34: Climb on heading 337° or as assigned by ATC, for vectors to TREVA, thence ...

... on track 305° to TATAR, then on track 305° to ALISS.
Maintain ATC assigned altitude.

TAKEOFF MINIMUMS
Rwys 16, 34: Standard.



ALISS SIX DEPARTURE (RNAV)

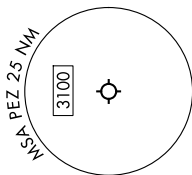
(ALISS6.ALISS) 25JAN24

PLEASANTON, TEXAS
PLEASANTON MUNI (PEZ)

(ALISS7.ALISS) 25219 AL-6114 (FAA)
ALISS SEVEN DEPARTURE (RNAV)

PLEASANTON MUNI (PEZ)
PLEASANTON, TEXAS

TOP ALTITUDE:
ASSIGNED BY ATC

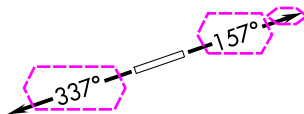
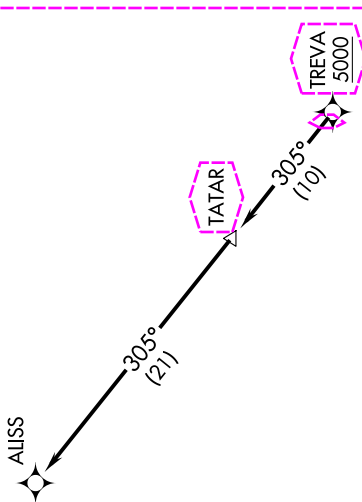


RNAV 1 - DME/DME/IRU or GPS.
RADAR required for non-GPS equipped aircraft.
RADAR required.

SAN ANTONIO DEP CON
125.7 290.225
CLNC DEL
121.375

N

TAKEOFF MINIMUMS
Rwys 16, 34: Standard.



NOTE: Chart not to scale.

DEPARTURE ROUTE DESCRIPTION

TAKEOFF RUNWAY 16: Climb on heading 157° or as assigned by ATC, for vectors to TREVA, thence. . .
TAKEOFF RUNWAY 34: Climb on heading 337° or as assigned by ATC, for vectors to TREVA, thence. . .
...on track 305° to TATAR, then on track 305° to ALISS. Maintain ATC assigned altitude. Expect filed altitude 10 minutes after departure.

ALISS SEVEN DEPARTURE (RNAV)
(ALISS7.ALISS) 07AUG25

PLEASANTON, TEXAS
PLEASANTON MUNI (PEZ)