

DICKSON, TENNESSEE

AL-6085 (FAA)

22363

APP CRS	Rwy Idg	5001
173°	TDZE	892
	Apt Elev	892

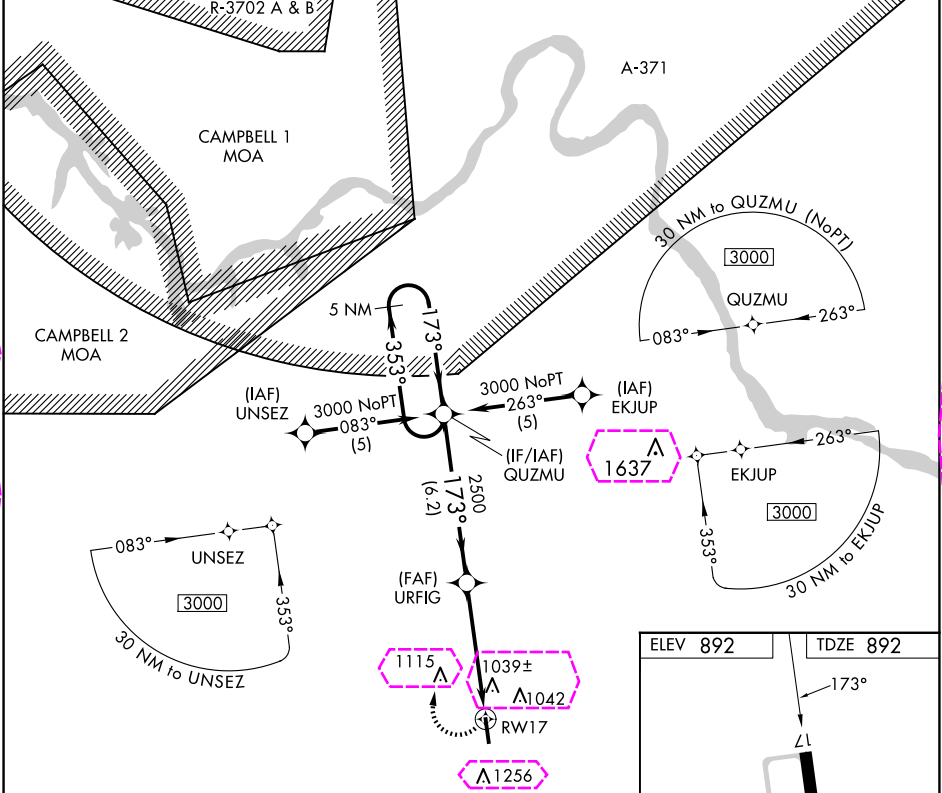
# RNAV (GPS) RWY 17

DICKSON MUNI (M02)

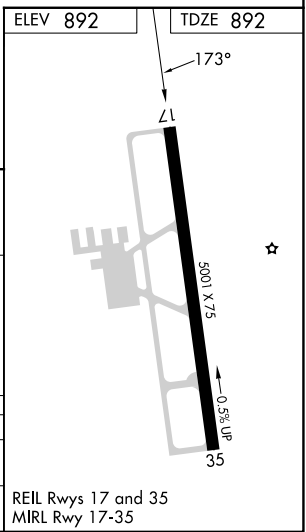
**Night Landing:** Rwy 35 NA. DME/DME RNP-0.3 NA. Helicopter visibility reduction below 3/4 SM NA. When local altimeter setting not received, use Nashville Intl altimeter setting and increase all MDA 140 feet and increase LNAV Cat C and Circling Cat B visibility 1/4 mile and LNAV Cat D and Circling Cat C/D 1/2 mile.

**MISSED APPROACH:** Climbing right turn to 3000 direct QUZMU and hold.

AWOS-3 123.875	MEMPHIS CENTER 125.85 379.25	UNICOM 122.8 (CTAF)
-------------------	---------------------------------	------------------------



5 NM Holding Pattern				
QUZMU				
3000 ← 353° → 173° → 173° →				
Visual Segment - Obstacles.				
2500				
6.2 NM 4.9 NM				
CATEGORY	A	B	C	D
LNAV MDA	1300-1	408 (500-1)	1300-1 1/8	408 (500-1 1/8)
CIRCLING	1420-1	1560-1	1560-1 3/4	1560-2
	528 (600-1)	668 (700-1)	668 (700-1 3/4)	668 (700-2)



DICKSON, TENNESSEE  
Amdt 1C 18JUN20

36°08'N-87°26'W

# DICKSON MUNI (M02)

## RNAV (GPS) RWY 17

DICKSON, TENNESSEE

AL-6085 (FAA)

25219

APP CRS	Rwy Ldg	5001
173°	TDZE	892
	Apt Elev	892

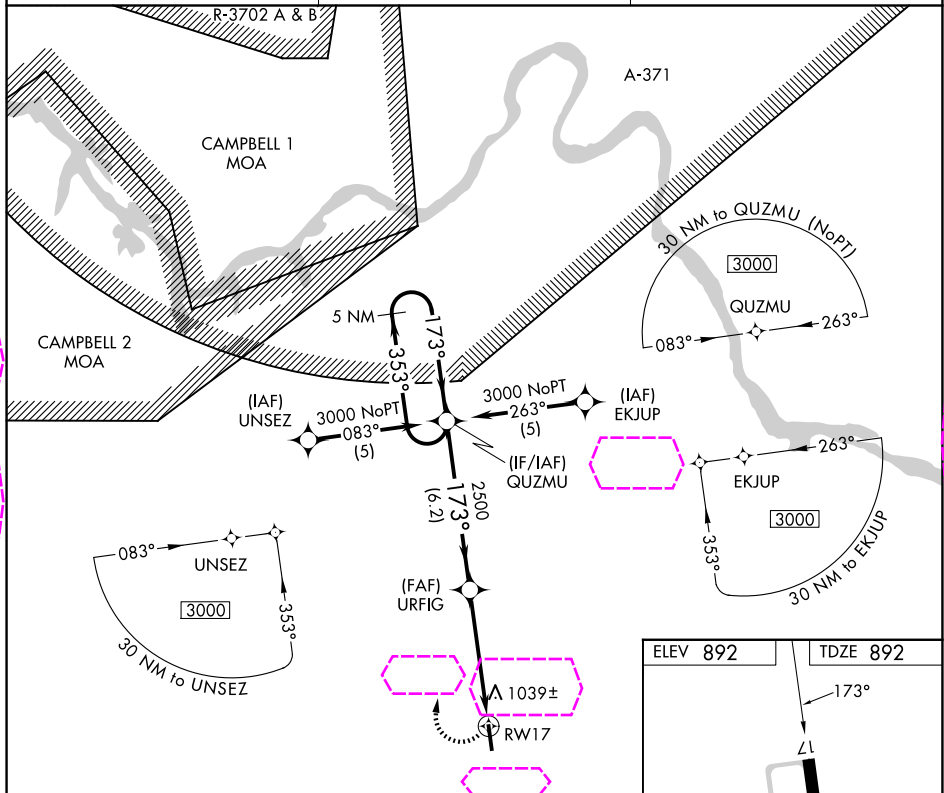
# RNAV (GPS) RWY 17

DICKSON MUNI (M02)

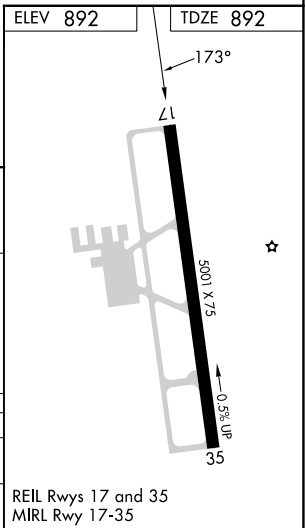
**Night Landing:** Rwy 35 NA. DME/DME RNP-0.3 NA. Helicopter visibility reduction below 3/4 SM NA. When local altimeter setting not received, use Nashville Init altimeter setting and increase all MDA 140 feet and increase LNAV Cat C and Circling Cat B visibility 1/4 mile and LNAV Cat D and Circling Cat C/D 1/2 mile.

**MISSED APPROACH:** Climbing right turn to 3000 direct QUZMU and hold.

AWOS-3 123.875	NASHVILLE APP CON 119.35 372.0	UNICOM 122.8 (CTAF)
-------------------	-----------------------------------	------------------------



5 NM Holding Pattern				
QUZMU				
3000 ← 353° → 173° → 173° →				
Visual Segment - Obstacles.				
2500				
6.2 NM 4.9 NM				
CATEGORY	A	B	C	D
LNAV MDA	1300-1	408 (500-1)	1300-1 1/8	408 (500-1 1/8)
CIRCLING	1420-1	1560-1	1560-1 3/4	1560-2
	528 (600-1)	668 (700-1)	668 (700-1 3/4)	668 (700-2)



DICKSON, TENNESSEE  
Amdt 1C 18JUN20

36°08'N-87°26'W

# RNAV (GPS) RWY 17

SE-1, 07 AUG 2025 to 04 SEP 2025

SE-1, 07 AUG 2025 to 04 SEP 2025