

(YODUH1.YODUH) 24025

AL-6080 (FAA)

NEW BRAUNFELS NTL (BAZ)

YODUH ONE DEPARTURE (RNAV)

NEW BRAUNFELS, TEXAS

RNAV 1 - DME/DME IRU or GPS.

**TOP ALTITUDE:
ASSIGNED BY ATC**

RADAR required.

SAN ANTONIO DEP CON

128.05 290.225

ATIS

119.325

CLNC DEL

134.75

CLNC DEL (When twr closed)

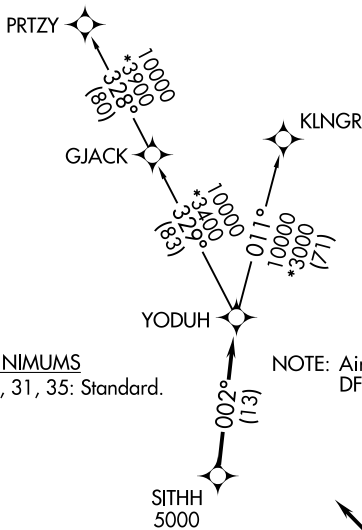
134.75

GND CON

120.175

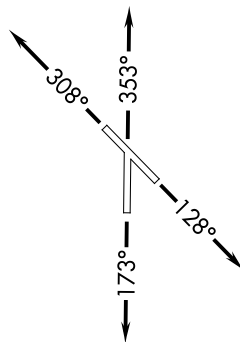
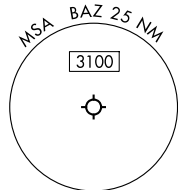
NEW BRAUNFELS TOWER ★

127.05 285.4

**TAKEOFF MINIMUMS**

Rwys 13, 17, 31, 35: Standard.

NOTE: Aircraft destined for airports north/northeast of DFW terminal area must file the KLNGR Transition.



NOTE: Chart not to scale.

**DEPARTURE ROUTE DESCRIPTION****TAKEOFF RUNWAY 13:** Climb on heading 128° or as assigned by ATC, for vectors to SITHH, thence . . .**TAKEOFF RUNWAY 17:** Climb on heading 173° or as assigned by ATC, for vectors to SITHH, thence . . .**TAKEOFF RUNWAY 31:** Climb on heading 308° or as assigned by ATC, for vectors to SITHH, thence . . .**TAKEOFF RUNWAY 35:** Climb on heading 353° or as assigned by ATC, for vectors to SITHH, thence . . .

. . . on track 002° to YODUH, then on Transition. Maintain ATC assigned altitude.

KLNGR TRANSITION (YODUH1.KLNGR)

PRTZY TRANSITION (YODUH1.PRTZY)

YODUH ONE DEPARTURE (RNAV)

(YODUH1.YODUH) 25JAN24

NEW BRAUNFELS, TEXAS

NEW BRAUNFELS NTL (BAZ)

SC-3, 10 JUL 2025 to 07 AUG 2025

SC-3, 10 JUL 2025 to 07 AUG 2025

(YODUH2.YODUH) 25219

AL-6080 (FAA)

NEW BRAUNFELS NTL (BAZ)

NEW BRAUNFELS, TEXAS

YODUH TWO DEPARTURE (RNAV)

SAN ANTONIO DEP CON

128.05 290.225

ATIS

119.325

CLNC DEL

134.75

CLNC DEL (When twr closed)

134.75

GND CON

120.175

NEW BRAUNFELS TOWER *

127.05 285.4

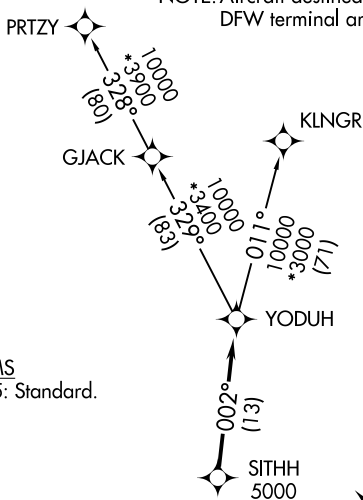
RNAV 1 - DME/DME IRU or GPS.

RADAR required for non-GPS equipped aircraft.

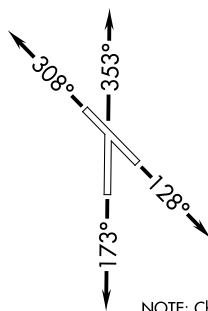
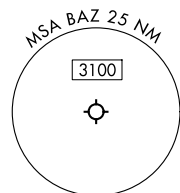
RADAR required.

**TOP ALTITUDE:
ASSIGNED BY ATC**

NOTE: Aircraft destined for airports north/northeast of DFW terminal area must file the KLNGR Transition.

**TAKEOFF MINIMUMS**

Rwys 13, 17, 31, 35: Standard.



NOTE: Chart not to scale.

DEPARTURE ROUTE DESCRIPTION**TAKEOFF RUNWAY 13:** Climb on heading 128° or as assigned by ATC, for vectors to SITHH, thence. . .**TAKEOFF RUNWAY 17:** Climb on heading 173° or as assigned by ATC, for vectors to SITHH, thence. . .**TAKEOFF RUNWAY 31:** Climb on heading 308° or as assigned by ATC, for vectors to SITHH, thence. . .**TAKEOFF RUNWAY 35:** Climb on heading 353° or as assigned by ATC, for vectors to SITHH, thence. . .

. . . on track 002° to YODUH, then on transition. Maintain ATC assigned altitude. Expect filed altitude 10 minutes after departure.

KLNGR TRANSITION (YODUH2.KLNGR)**PRTZY TRANSITION (YODUH2.PRTZY)****YODUH TWO DEPARTURE (RNAV)**

(YODUH2.YODUH) 07AUG25

NEW BRAUNFELS, TEXAS
NEW BRAUNFELS NTL (BAZ)

SC-3, 07 AUG 2025 to 04 SEP 2025

SC-3