

(TJANO1.TJANO) 24025

AL-6080 (FAA)

NEW BRAUNFELS NTL (BAZ)
NEW BRAUNFELS, TEXAS

TJANO ONE DEPARTURE (RNAV)

SAN ANTONIO DEP CON
128.05 290.225
ATIS
119.325
CLNC DEL
134.75
GND CON
120.175
NEW BRAUNFELS TOWER ★
127.05 285.4

RNAV 1 - DME/DME IRU or GPS.
RADAR required.

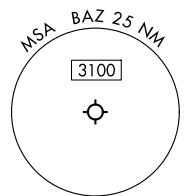
**TOP ALTITUDE:
ASSIGNED BY ATC**

NOTE: For non-GPS equipped aircraft,
THX and SAT DME must be operational.

LVACA
5000

TJANO

TAKEOFF MINIMUMS
Rwys 13, 17, 31, 35: Standard.



TEEPY

ZANNI
KAHAN



DEPARTURE ROUTE DESCRIPTION

TAKEOFF RUNWAY 13: Climb on heading 128° or as assigned by ATC, for vectors to LVACA, thence . . .

TAKEOFF RUNWAY 17: Climb on heading 173° or as assigned by ATC, for vectors to LVACA, thence . . .

TAKEOFF RUNWAY 31: Climb on heading 308° or as assigned by ATC, for vectors to LVACA, thence . . .

TAKEOFF RUNWAY 35: Climb on heading 353° or as assigned by ATC, for vectors to LVACA, thence . . .

. . . on track 205° to TJANO, then on Transition.
Maintain ATC assigned altitude.

KAHAN TRANSITION (TJANO1.KAHAN)
ZANNI TRANSITION (TJANO1.ZANNI)

Note: Chart not to scale.

TJANO ONE DEPARTURE (RNAV)

(TJANO1.TJANO) 25JAN24

NEW BRAUNFELS, TEXAS
NEW BRAUNFELS NTL (BAZ)

SC-3, 10 JUL 2025 to 07 AUG 2025

SC-3, 10 JUL 2025 to 07 AUG 2025

SC-3

(TJANO2.TJANO) 25219

AL-6080 (FAA)

NEW BRAUNFELS NTL (BAZ)
NEW BRAUNFELS, TEXAS

TJANO TWO DEPARTURE (RNAV)

SAN ANTONIO DEP CON
128.05 290.225
ATIS
119.325
CLNC DEL
134.75
CLNC DEL (When twr closed)
134.75
GND CON
120.175
NEW BRAUNFELS TOWER★
127.05 285.4

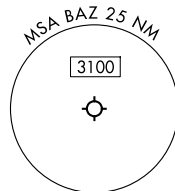
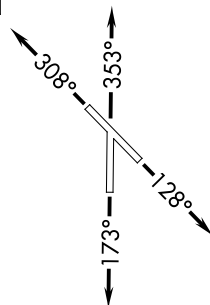
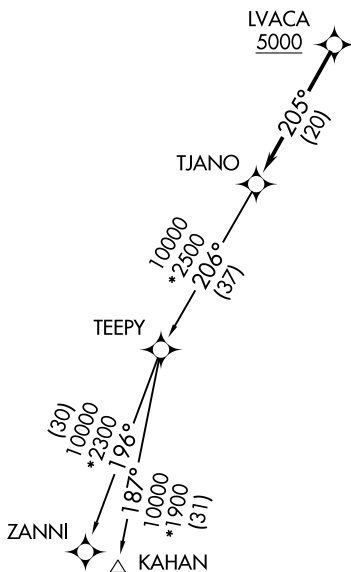
RNAV 1 - DME/DME IRU or GPS.

RADAR required for non-GPS equipped aircraft.
RADAR required.

**TOP ALTITUDE:
ASSIGNED BY ATC**

TAKEOFF MINIMUMS

Rwys 13, 17, 31, 35: Standard.



NOTE: Chart not to scale.

DEPARTURE ROUTE DESCRIPTION

TAKEOFF RUNWAY 13: Climb on heading 128° or as assigned by ATC, for vectors to LVACA, thence. . .

TAKEOFF RUNWAY 17: Climb on heading 173° or as assigned by ATC, for vectors to LVACA, thence. . .

TAKEOFF RUNWAY 31: Climb on heading 308° or as assigned by ATC, for vectors to LVACA, thence. . .

TAKEOFF RUNWAY 35: Climb on heading 353° or as assigned by ATC, for vectors to LVACA, thence. . .

. . . on track 205° to TJANO, then on transition. Maintain ATC assigned altitude.
Expect filed altitude 10 minutes after departure.

KAHAN TRANSITION (TJANO2.KAHAN)

ZANNI TRANSITION (TJANO2.ZANNI)

TJANO TWO DEPARTURE (RNAV)

(TJANO2.TJANO) 07AUG25

NEW BRAUNFELS, TEXAS
NEW BRAUNFELS NTL (BAZ)

SC-3, 07 AUG 2025 to 04 SEP 2025

SC-3, 07 AUG 2025 to 04 SEP 2025