

SIDNEY, NEW YORK

AL-6076 (FAA)

25163

WAAS CH 77537 W25A	APP CRS 251°	Rwy Ldg TDZE Apt Elev	4201 1027 1027
--	------------------------	-----------------------------	---

RNAV (GPS) RWY 25

SIDNEY MUNI (N23)

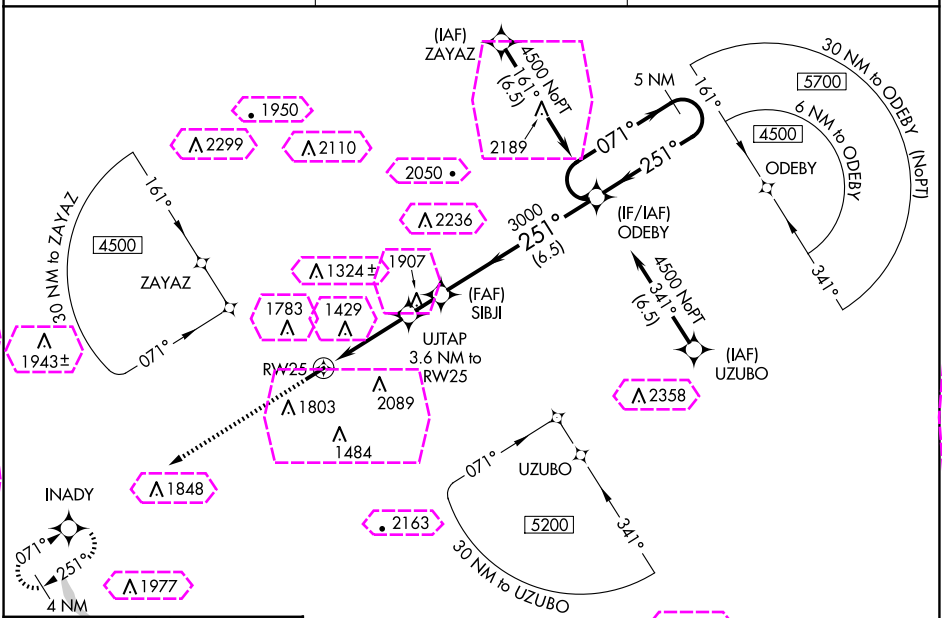
RNP APCH - GPS.

NA
-21°C

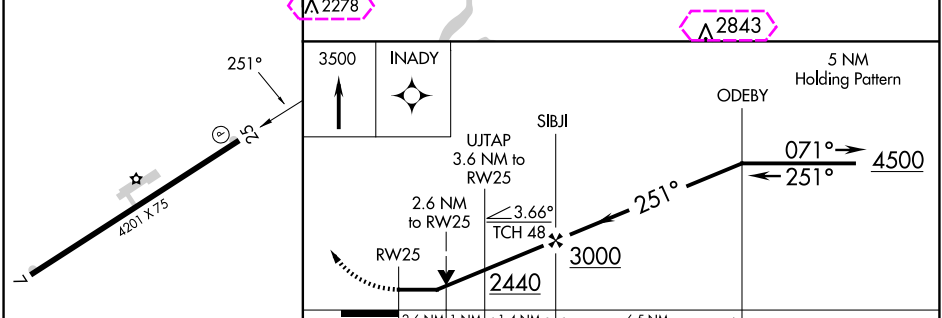
Circling Rwy 7 NA at night. VDP NA when using Binghamton altimeter setting. When local altimeter setting not received, use Binghamton altimeter setting and increase all MDAs 140 feet.

MISSED APPROACH: Climb to 3500 direct INADY and hold.

AWOS-3 118.275	BOSTON CENTER 133.25 279.5	UNICOM 122.8 (CTAF) 0
--------------------------	--------------------------------------	---------------------------------



ELEV 1027	TDZE 1027
-----------	-----------



CATEGORY	A	B	C	D
LP MDA	2080-1¼ 1053 (1100-1¼)	2080-1½ 1053 (1100-1½)	2080-3 1053 (1100-3)	NA
LNAV MDA	2200-1¼ 1173 (1200-1¼)	2200-1½ 1173 (1200-1½)	2200-3 1173 (1200-3)	NA
CIRCLING	2200-1¼ 1173 (1200-1¼)	2240-1½ 1213 (1300-1½)	2460-3 1433 (1500-3)	NA

SIDNEY, NEW YORK
Amdt 1B 11AUG22

42°18'N-75°25'W

RNAV (GPS) RWY 25

SIDNEY, NEW YORK



AL-6076 (FAA)

25219

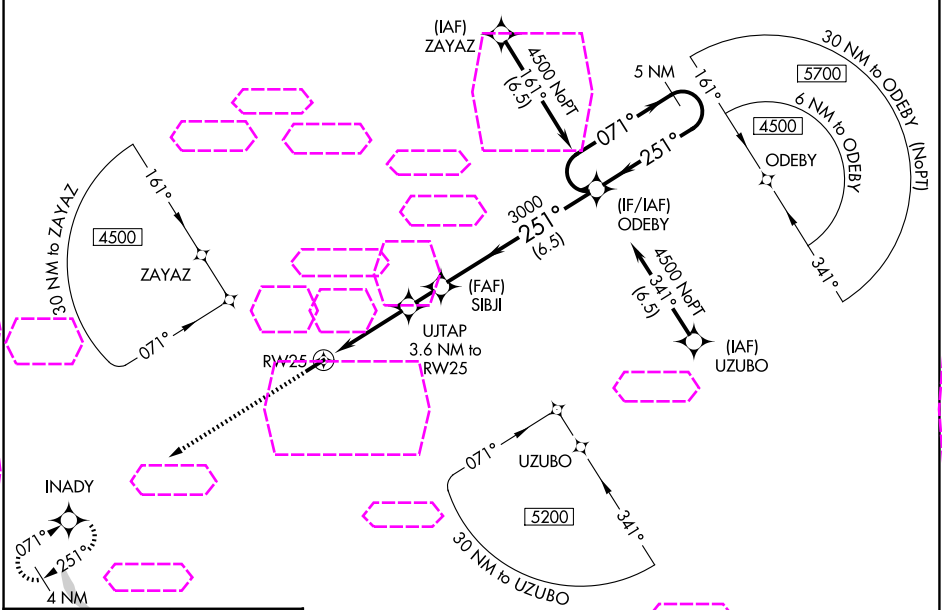
WAAS CH 77537 W25A	APP CRS 251°	Rwy Ldg TDZE Apt Elev	4201 1027 1027
--	------------------------	-----------------------------	---

RNAV (GPS) RWY 25

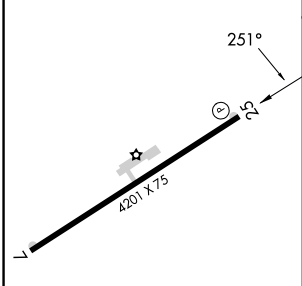
SIDNEY MUNI (N23)

RNP APCH - GPS.		MISSED APPROACH: Climb to 3500 direct INADY and hold.
 NA  -20°C	Circling Rwy 7 NA at night. VDP NA when using Binghamton altimeter setting. When local altimeter setting not received, use Binghamton altimeter setting and increase all MDAs 140 feet.	

AWOS-3 118.275	BOSTON CENTER 133.25 279.5	UNICOM 122.8 (CTAF) 0
--------------------------	--------------------------------------	---------------------------------



ELEV 1027	TDZE 1027
-----------	-----------

		5 NM Holding Pattern			
3500 INADY		ODEBY			
UJTAP 3.6 NM to RW25		071° → 4500			
2.6 NM to RW25		← 251°			
RW25		3000			
2.6 NM 1 NM 1.4 NM 6.5 NM					
CATEGORY	A	B	C	D	
LP MDA	2080-1¼ 1053 (1100-1¼)	2080-1½ 1053 (1100-1½)	2080-3 1053 (1100-3)	NA	
LNAV MDA	2200-1¼ 1173 (1200-1¼)	2200-1½ 1173 (1200-1½)	2200-3 1173 (1200-3)	NA	
CIRCLING	2200-1¼ 1173 (1200-1¼)	2240-1½ 1213 (1300-1½)	2460-3 1433 (1500-3)	NA	