

LIVERMORE, CALIFORNIA

AL-6075 (FAA)


23054

WAAS CH <b>50214</b> <b>W25A</b>	APP CRS <b>255°</b>	Rwy Idg TDZE Apt Elev	<b>5253</b> <b>400</b> <b>400</b>
--	------------------------	-----------------------------	---

# RNAV (GPS) RWY 25R

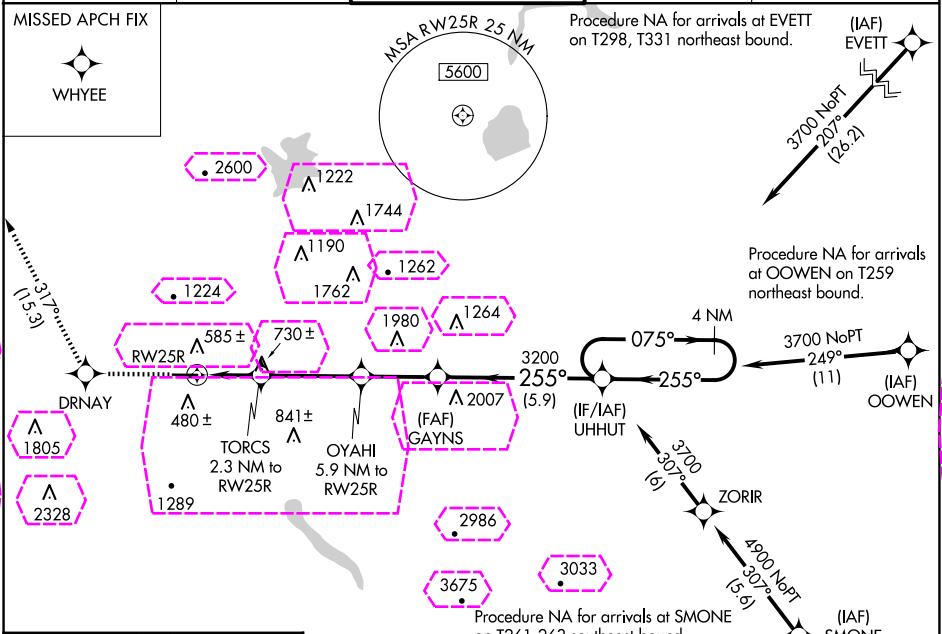
LIVERMORE MUNI (LVK)

**⚠** Circling to Rwy 25L NA at night. For uncompensated Baro-VNAV systems, LNAV/VNAV NA below -5°C (23°F) or above 54°C (130°F). Circling NA north of Rwy 7L-25R. RADAR Required. DME/DME RNP-0.3 NA. For inop ALS, increase LNAV Cat C/D to 1½ SM.

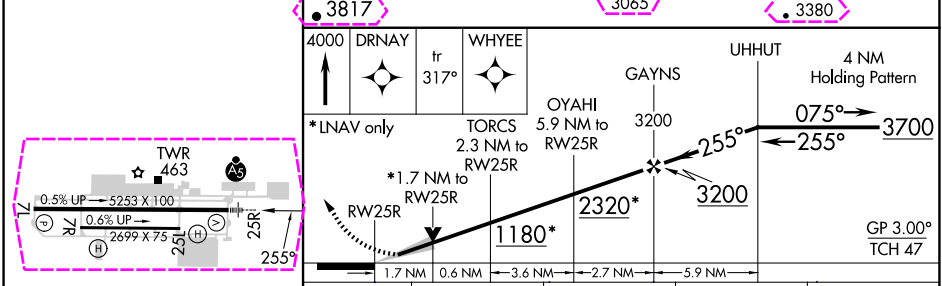
**MALSR** 

**MISSED APPROACH:** Climb to 4000 direct DRNAV and on track 317° to WHYEE.

ATIS <b>119.65</b>	NORCAL APP CON <b>123.85 278.3</b>	LIVERMORE TOWER ★ <b>118.1(CTAF) 0 239.25</b>	GND CON <b>121.6</b>	UNICOM <b>122.95</b>
-----------------------	---------------------------------------	--	-------------------------	-------------------------



ELEV 400	TDZE 400
----------	----------



CATEGORY	A	B	C	D
LPV DA	600-½ 200 (200-½)			
LNAV/VNAV DA	843-¾ 443 (500-¾)			
LNAV MDA	980-½ 580 (600-½)		980-¼ 580 (600-¼)	
<b>CIRCLING</b>	980-1 580 (600-1)		1140-2 740 (800-2)	1780-3 1380 (1400-3)

LIVERMORE, CALIFORNIA

LIVERMORE MUNI (LVK)

Amtd 2 07DEC17

37°42'N-121°49'W

# RNAV (GPS) RWY 25R

SW-2, 10 JUL 2025 to 07 AUG 2025

SW-2, 10 JUL 2025 to 07 AUG 2025

LIVERMORE, CALIFORNIA

AL-6075 (FAA)

25219

WAAS CH <b>50214</b> <b>W25A</b>	APP CRS <b>255°</b>	Rwy Ldg TDZE Apt Elev	<b>5253</b> <b>400</b> <b>400</b>
--	------------------------	-----------------------------	---

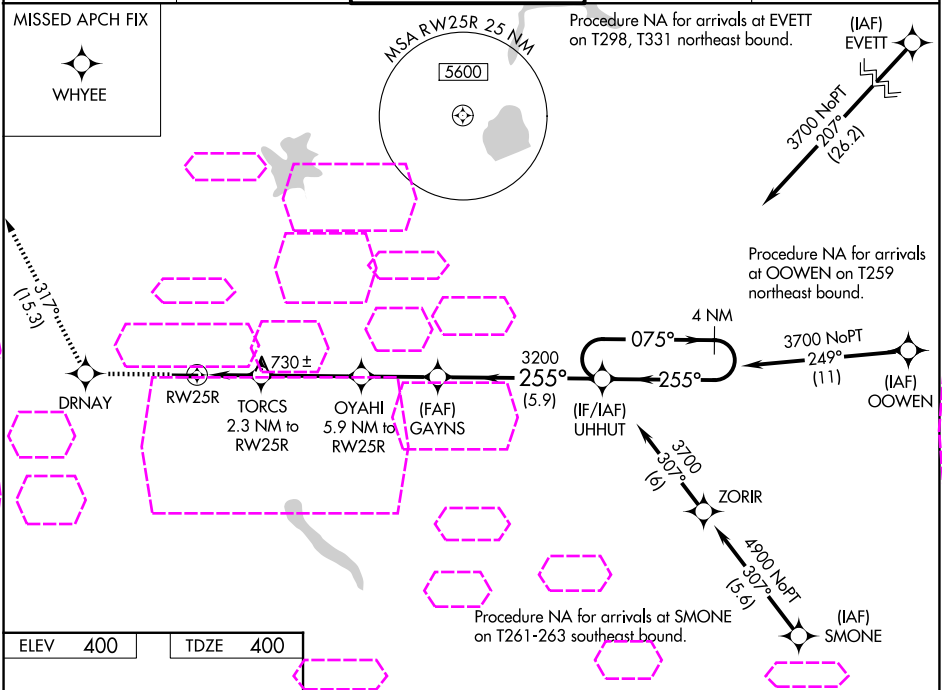
# RNAV (GPS) RWY 25R

LIVERMORE MUNI (LVK)

**⚠** Circling to Rwy 25L NA at night. For uncompensated Baro-VNAV systems, LNAV/VNAV NA below -5°C (23°F) or above 54°C (130°F). Circling NA north of Rwy 7L-25R. RADAR Required. DME/DME RNP-0.3 NA. For inop ALS, increase LNAV Cat C/D to 1½ SM.

**MALSR**  
  
**MISSED APPROACH:** Climb to 4000 direct DRNAV and on track 317° to WHYEE.

ATIS <b>119.65</b>	NORCAL APP CON <b>123.85 278.3</b>	LIVERMORE TOWER ★ <b>118.1 (CTAF) 239.25</b>	GND CON <b>121.6</b>	UNICOM <b>122.95</b>
-----------------------	---------------------------------------	---	-------------------------	-------------------------



ELEV 400	TDZE 400	4000  317°			
		<b>*LNAV only</b> TORCS 2.3 NM to RW25R OYAH 5.9 NM to RW25R RW25R 1.7 NM to RW25R GAYNS 3200 UHHUT 4 NM Holding Pattern GP 3.00° TCH 47			
CATEGORY	A	B	C	D	
LPV DA	600-½ 200 (200-½)				
LNAV/VNAV DA	843-⅞ 443 (500-⅞)				
LNAV MDA	980-½ 580 (600-½)		980-1¼ 580 (600-1¼)		
<b>CIRCLING</b>	980-1 580 (600-1)		1140-2 1780-3 740 (800-2) 1380 (1400-3)		

LIVERMORE, CALIFORNIA  
Amdt 2 07DEC17

37°42'N-121°49'W

LIVERMORE MUNI (LVK)  
**RNAV (GPS) RWY 25R**