

LIVERMORE, CALIFORNIA

AL-6075 (FAA)

24025

LOC/DME I-LVK 110.5 Chan 42	APP CRS 255°	Rwy ldg 5253 TDZE 400 Apt Elev 400
---	------------------------	---

LOC RWY 25R

LIVERMORE MUNI (LVK)

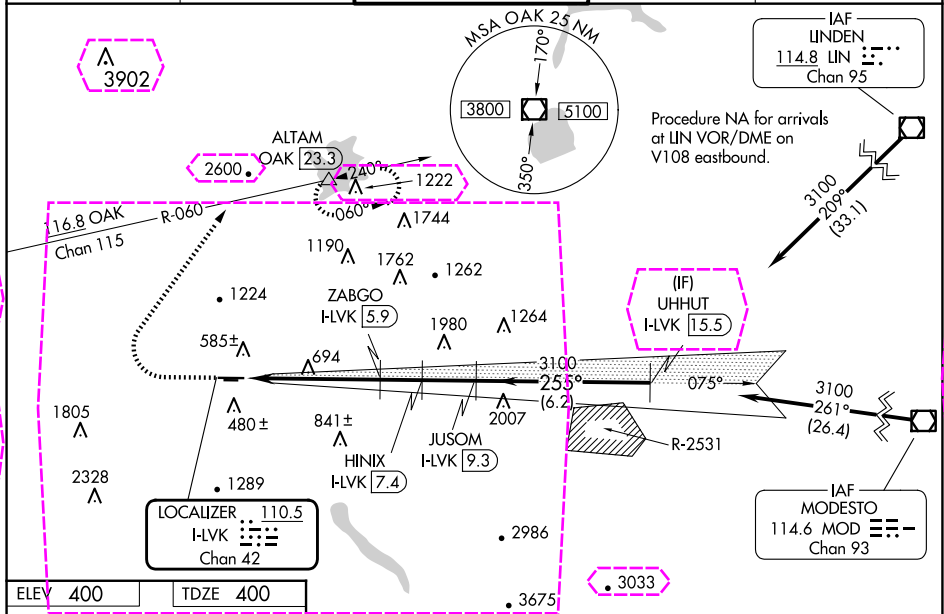
⚠ Circling to Rwy 25L NA at night.
Inop table does not apply to S-25R Cats C/D.
Circling NA north of Rwy 7L-25R.
DME required.

MALSRL

A5

MISSED APPROACH: Climb to 2000 then climbing right turn to 5000 on heading 020° and OAK VOR/DME R-060 to ALTAM/OAK VOR/DME 23.3 DME and hold, continue climb-in-hold to 5000.
*Missed approach requires minimum climb of 235 feet per NM to 3600.

ATIS 119.65	NORCAL APP CON 123.85 278.3	LIVERMORE TOWER ★ 118.1 (CTAF) 0 239.25	GND CON 121.6	UNICOM 122.95
-----------------------	---------------------------------------	---	-------------------------	-------------------------



ELEV 400	TDZE 400
----------	----------

⚠ CIRCLING

2000 5000 OAK ALTAM

hdg 020°

HINIX I-LVK 7.4 JUSOM I-LVK 9.3 UHHUT I-LVK 15.5

I-LVK 1 I-LVK 2.9 ZABGO I-LVK 5.9

3100 2520 2000

2 NM 2.9 NM 1.5 NM 1.9 NM 6.2 NM

CATEGORY	A	B	C	D
S-LOC 25R*	1080-1½ 680 (700-1½)		1080-1½ 680 (700-1½)	
S-LOC 25R	2000-¾ 1600 (1600-¾)	2000-1 1600 (1600-1)	2000-3 1600 (1600-3)	
	2000-1¼ 1600 (1600-1¼)	2000-1½ 1600 (1600-1½)	2000-3 1600 (1600-3)	

LIVERMORE, CALIFORNIA
Amdt 1 07DEC17

37°42'N-121°49'W

LIVERMORE MUNI (LVK)
LOC RWY 25R

LIVERMORE, CALIFORNIA

AL-6075 (FAA)


25219

LOC/DME I-LVK 110.5 Chan 42	APP CRS 255°	Rwy Ldg TDZE 400 Apt Elev 400
---	------------------------	---

LOC RWY 25R
LIVERMORE MUNI (LVK)

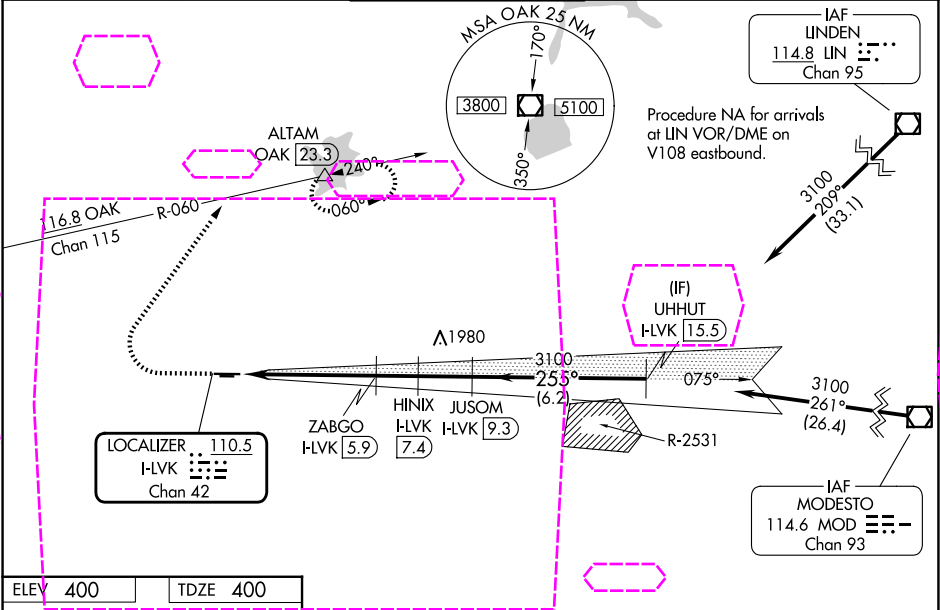
⚠ Circling to Rwy 25L NA at night.
Inop table does not apply to S-25R Cats C/D.
Circling NA north of Rwy 7L-25R.
DME required.

MALSRL

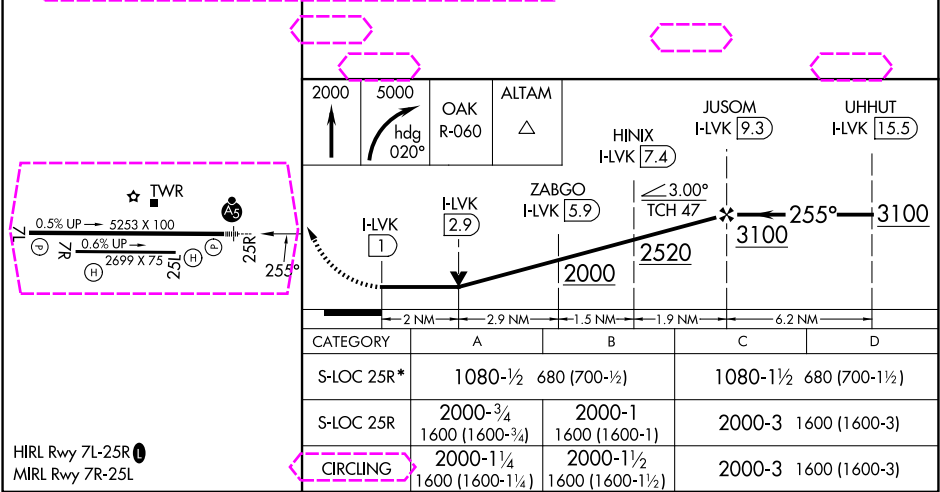


MISSED APPROACH: Climb to 2000 then climbing right turn to 5000 on heading 020° and OAK VOR/DME R-060 to ALTAM/OAK VOR/DME 23.3 DME and hold, continue climb-in-hold to 5000.
*Missed approach requires minimum climb of 235 feet per NM to 3600.

ATIS 119.65	NORCAL APP CON 123.85 278.3	LIVERMORE TOWER ★ 118.1 (CTAF) 239.25	GND CON 121.6	UNICOM 122.95
-----------------------	---------------------------------------	---	-------------------------	-------------------------



ELEV 400	TDZE 400
----------	----------



HIRL Rwy 7L-25R
MIRL Rwy 7R-25L

LIVERMORE, CALIFORNIA
Amdt 1 07DEC17

37°42'N-121°49'W

LIVERMORE MUNI (LVK)
LOC RWY 25R

SW-2, 07 AUG 2025 to 04 SEP 2025

SW-2, 07 AUG 2025 to 04 SEP 2025