

LIVERMORE, CALIFORNIA

AL-6075 (FAA)

24025

LOC/DME I-LVK 110.5 Chan 42	APP CRS 255°	Rwy ldg 5253 TDZE 400 Apt Elev 400
---	------------------------	---

ILS RWY 25R

LIVERMORE MUNI (LVK)

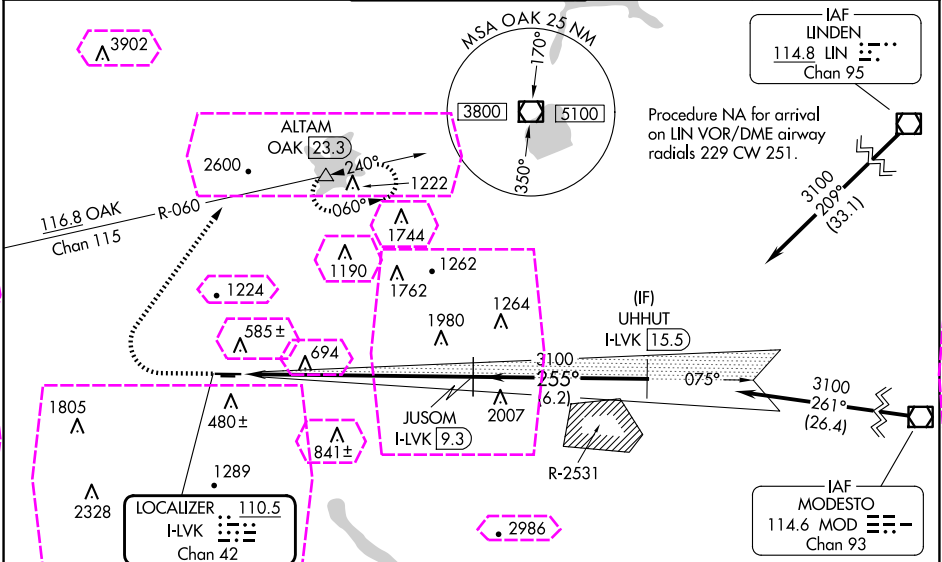
DME required.

▼
▲

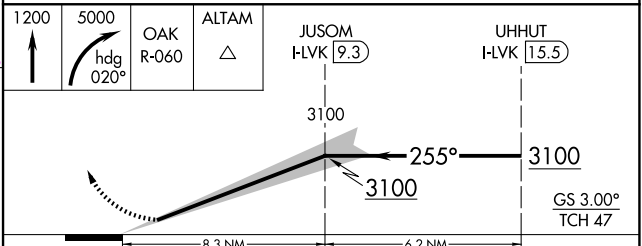
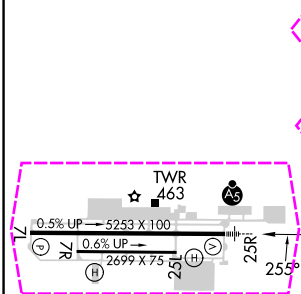
MALSRL

MISSED APPROACH: Climb to 1200 then climbing right turn to 5000 on heading 020° and OAK VOR/DME R-060 to ALTAM/OAK VOR/DME 23.3 DME and hold, continue climb-in-hold to 5000.
*Missed approach requires a minimum climb of 358 feet per NM to 3600, if unable to meet climb gradient, see LOC RWY 25R.

ATIS 119.65	NORCAL APP CON 123.85 278.3	LIVERMORE TOWER ★ 118.1 (CTAF) 0 239.25	GND CON 121.6	UNICOM 122.95
-----------------------	---------------------------------------	---	-------------------------	-------------------------



ELEV 400	TDZE 400
----------	----------



CATEGORY	A	B	C	D
S-ILS 25R	600-½ 200 (200-½)			

LIVERMORE, CALIFORNIA
Amdt 9A 10SEP20

37°42'N-121°49'W

LIVERMORE MUNI (LVK)
ILS RWY 25R

LIVERMORE, CALIFORNIA

AL-6075 (FAA)

25219

LOC/DME I-LVK 110.5 Chan 42	APP CRS 255°	Rwy Ldg 5253 TDZE 400 Apt Elev 400
---	------------------------	---

ILS RWY 25R
LIVERMORE MUNI (LVK)

DME required.

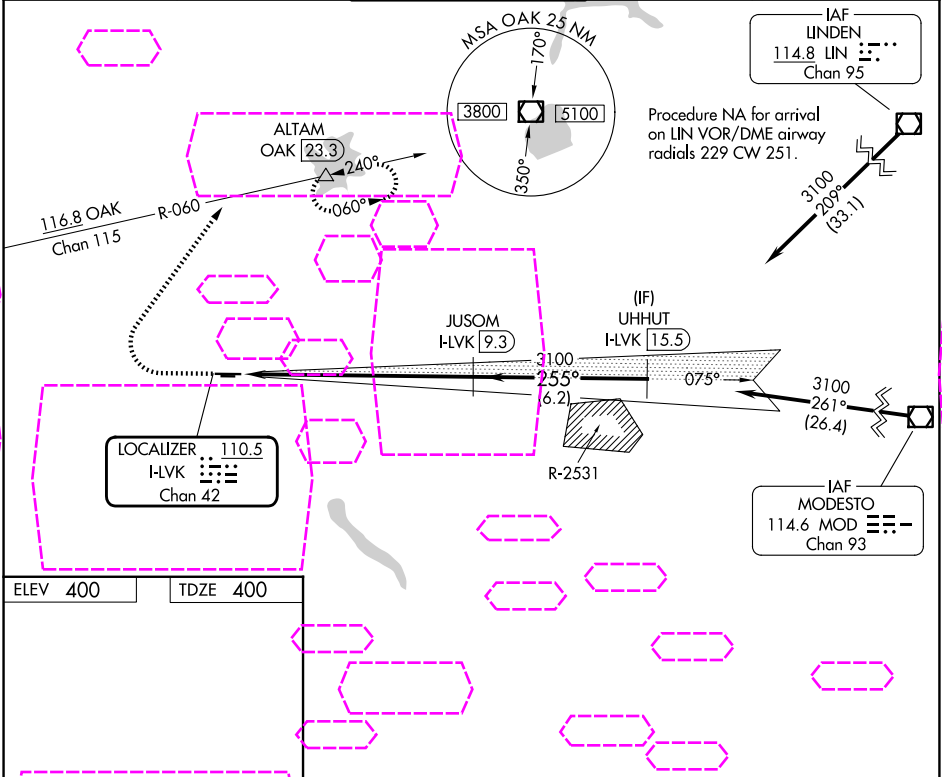
▽
▲

MALSRL

A5

MISSED APPROACH: Climb to 1200 then climbing right turn to 5000 on heading 020° and OAK VOR/DME R-060 to ALTAM/OAK VOR/DME 23.3 DME and hold, continue climb-in-hold to 5000.
*Missed approach requires a minimum climb of 358 feet per NM to 3600, if unable to meet climb gradient, see LOC RWY 25R.

ATIS 119.65	NORCAL APP CON 123.85 278.3	LIVERMORE TOWER ★ 118.1 (CTAF) 0 239.25	GND CON 121.6	UNICOM 122.95
-----------------------	---------------------------------------	---	-------------------------	-------------------------



ELEV 400 TDZE 400

☆ TWR

0.5% UP → 5253 X 100

0.6% UP → 2699 X 75

25R 255°

1200	5000	OAK R-060	ALTAM	JUSOM I-LVK 9.3	UHHUT I-LVK 15.5
↑	hdg 020°	△		3100	3100
				255°	3100
				3100	GS 3.00° TCH 47
				8.3 NM	6.2 NM
CATEGORY	A	B	C	D	
S-ILS 25R	600-½ 200 (200-½)				

HIRL Rwy 7L-25R

MIRL Rwy 7R-25L

LIVERMORE, CALIFORNIA
Amdt 9A 10SEP20

37°42'N-121°49'W

LIVERMORE MUNI (LVK)
ILS RWY 25R

SW-2, 07 AUG 2025 to 04 SEP 2025

SW-2, 07 AUG 2025 to 04 SEP 2025