

YAP INTL (T11)(PTYA)
RNAV (GPS) RWY 7

MIRL Rwy 7-25 **L**
REIL Rwy 7 and 25 **L**

YAP ISLAND, FM

AL-6048 (FAA)

25219

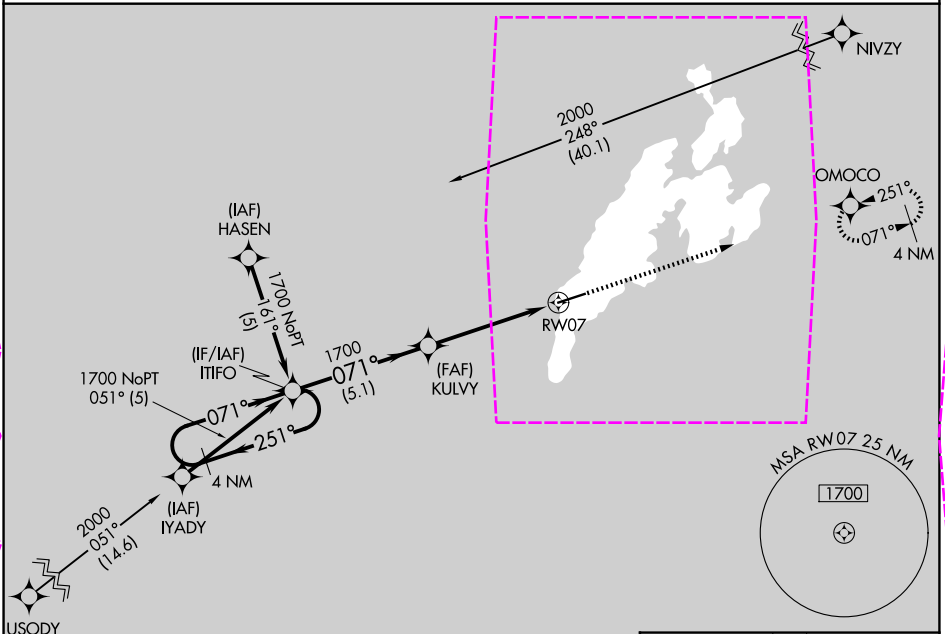
APP CRS	Rwy Ldg	6000
071°	TDZE	91
	Apt Elev	91

RNAV (GPS) RWY 7
YAP INTL (T11)(PTYA)

▼ Obtain local altimeter setting on CTAF; when not received, procedure not authorized.
Circling NA North of Rwy 7-25. DME/DME RNP-0.3 NA.
No controlled airspace below 5500'.

MISSED APPROACH: Climb to 1700 direct
OMOCO WP and hold.

YAP RADIO
123.6 0 (CTAF)



ELEV 91	TDZE 91
---------	---------

Diagram of the final approach to RW07, showing a 3.00° glide slope, 50' TCH, and a 6000 x 150 ft runway. The approach is at 071°.

CATEGORY	A	B	C	D
RNAV MDA	600-1 509 (600-1)	600-1½ 509 (600-1½)	600-1½ 509 (600-1½)	660-2 569 (600-2)
CIRCLING	600-1 509 (600-1)	600-1½ 509 (600-1½)	660-2 569 (600-2)	

MIRL Rwy 7-25
REIL Rwys 7 and 25

YAP ISLAND, FM
Orig-A 11MAY06

09°30'N-138°05'E

YAP INTL (T11)(PTYA)
RNAV (GPS) RWY 7