

YAP ISLAND, FM

AL-6048 (FAA)

25163

APP CRS	Rwy Ldg	6000
251°	TDZE	89
	Apt Elev	91

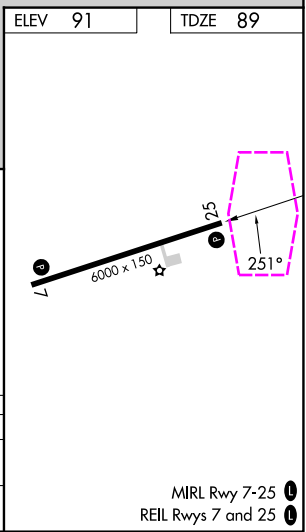
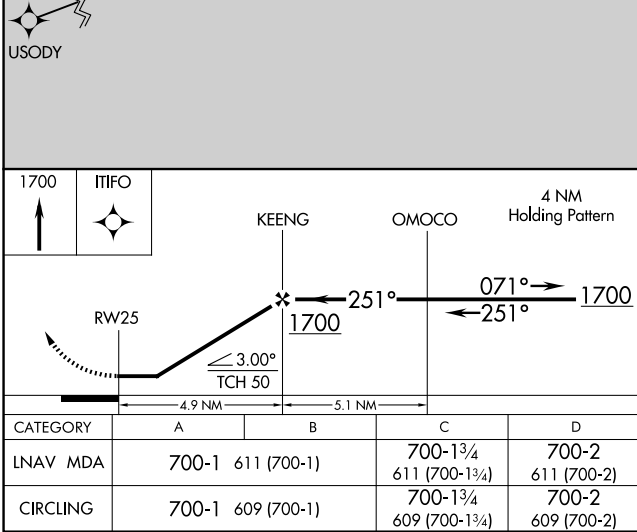
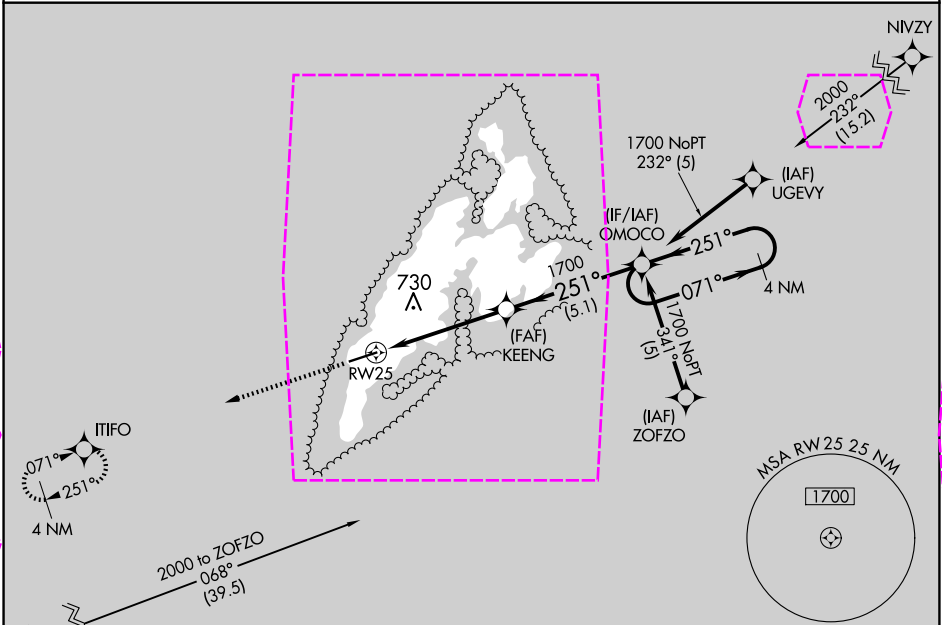
RNAV (GPS) RWY 25

YAP INTL (T11)(PTYA)

▼ Obtain local altimeter setting on CTAF; when not received, procedure not authorized.
Circling NA North of Rwy 7-25. DME/DME RNP-0.3 NA.
No controlled airspace below 5500'.

MISSED APPROACH: Climb to 1700 direct ITIFO
WP and hold.

YAP RADIO
123.6 0 (CTAF)



YAP ISLAND, FM
Orig-A 11MAY06

09°30'N-138°05'E

YAP INTL (T11)(PTYA)
RNAV (GPS) RWY 25

PAC, 12 JUN 2025 to 07 AUG 2025

PAC, 12 JUN 2025 to 07 AUG 2025

MIRL Rwy 7-25 1
REIL Rwy 7 and 25 1

YAP ISLAND, FM

AL-6048 (FAA)

25219

APP CRS	Rwy Ldg	6000
251°	TDZE	89
	Apt Elev	91

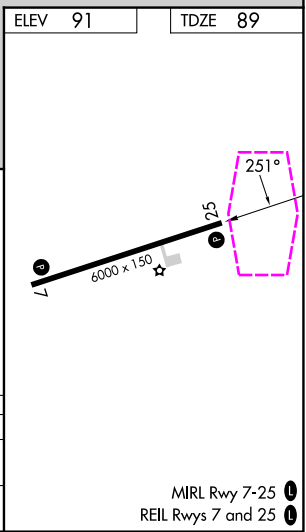
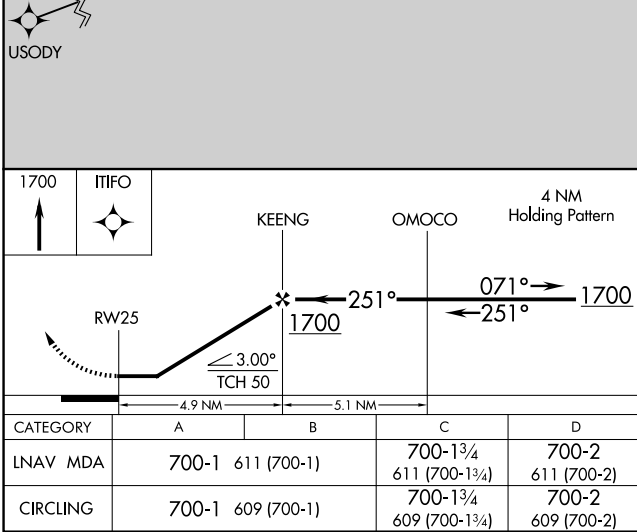
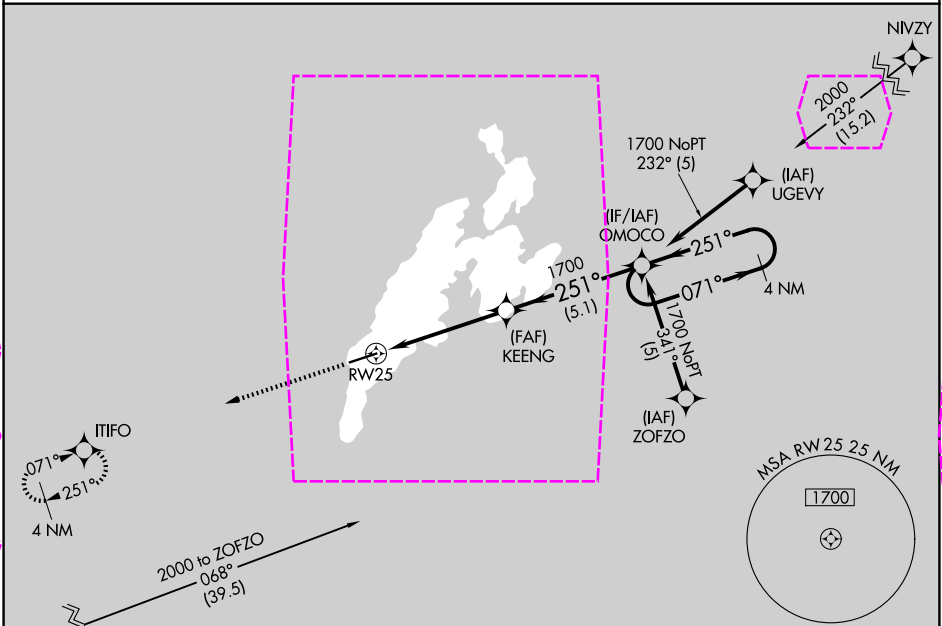
RNAV (GPS) RWY 25

YAP INTL (T11)(PTYA)

Obtain local altimeter setting on CTAF; when not received, procedure not authorized.
Circling NA North of Rwy 7-25. DME/DME RNP-0.3 NA.
No controlled airspace below 5500'.

MISSED APPROACH: Climb to 1700 direct ITIFO
WP and hold.

YAP RADIO
123.6 (CTAF)



YAP ISLAND, FM
Orig-A 11MAY06

09°30'N-138°05'E

YAP INTL (T11)(PTYA)
RNAV (GPS) RWY 25

PAC, 07 AUG 2025 to 02 OCT 2025

PAC, 07 AUG 2025 to 02 OCT 2025

MIRL Rwy 7-25
REIL Rwy 7 and 25