

YAP ISLAND, FM

AL-6048 (FAA)

25163

NDB/DME YP <b>317</b>	APP CRS <b>074°</b>	Rwy Ldg TDZE Apt Elev	<b>6000</b> <b>91</b> <b>91</b>
Chan <b>122 (117.5)</b>			

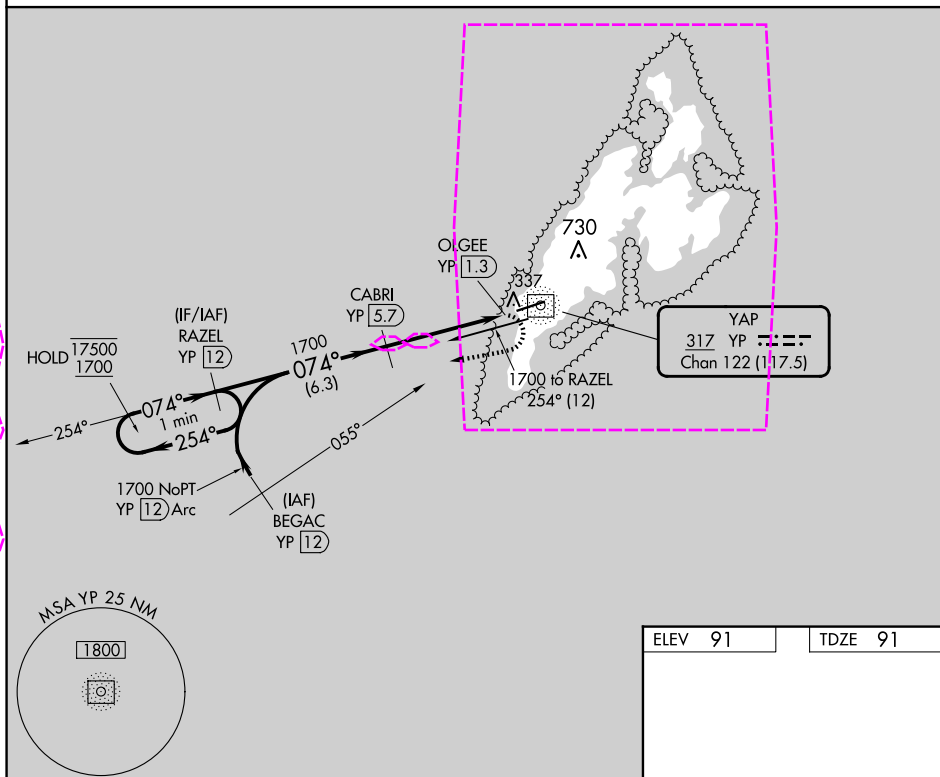
# NDB/DME RWY 7

YAP INTL (T11)(PTYA)

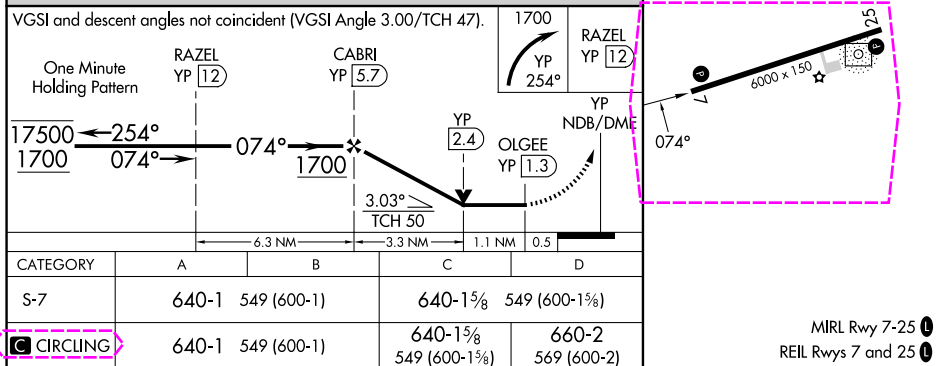
**▼** Circling NA north of Rwy 7-25.  
Rwy 7 helicopter visibility reduction below  $\frac{3}{4}$  SM NA.  
GPS required for procedure entry at BEGAC.  
No controlled airspace below 5500.

MISSED APPROACH: Climbing right turn to 1700 on 254° bearing from YP NDB/DME to RAZEL/12 DME and hold.

YAP RADIO  
**123.60** (CTAF)



VGSI and descent angles not coincident (VGSI Angle 3.00/TCH 47).



YAP ISLAND, FM  
Amdt 2B 27JAN22

09°30'N-138°05'E

YAP INTL (T11)(PTYA)  
**NDB/DME RWY 7**

PAC, 12 JUN 2025 to 07 AUG 2025

PAC, 12 JUN 2025 to 07 AUG 2025

YAP ISLAND, FM

AL-6048 (FAA)

25219

NDB/DME YP <b>317</b>	APP CRS <b>074°</b>	Rwy Ldg TDZE Apt Elev	<b>6000</b> <b>91</b> <b>91</b>
Chan <b>122 (117.5)</b>			

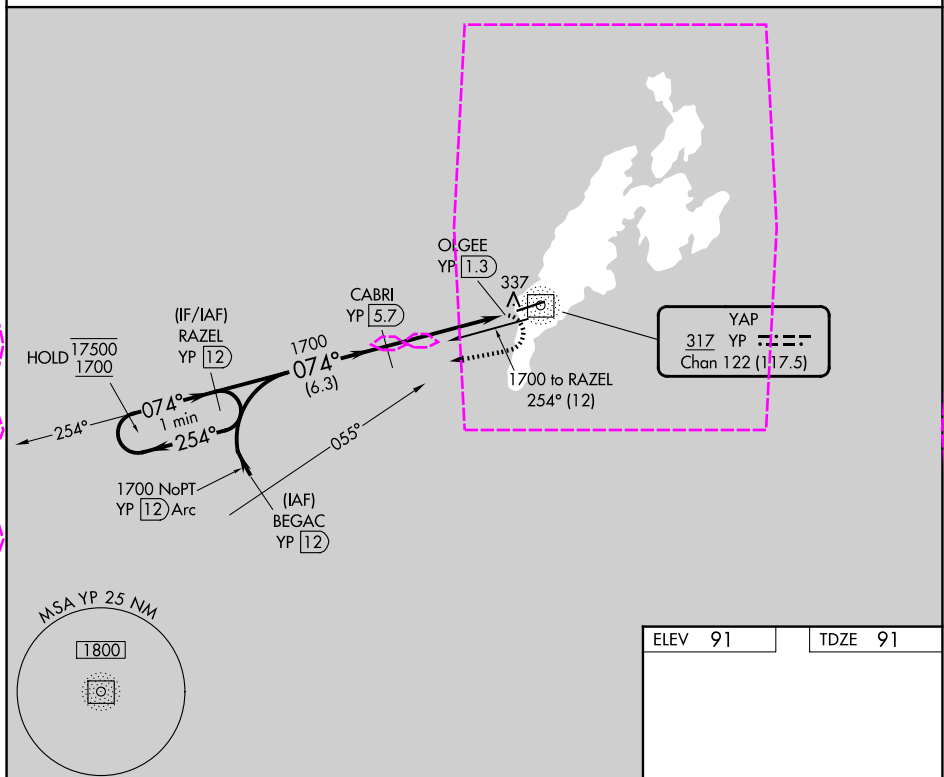
# NDB/DME RWY 7

YAP INTL (T11)(PTYA)

**▼** Circling NA north of Rwy 7-25.  
Rwy 7 helicopter visibility reduction below  $\frac{3}{4}$  SM NA.  
GPS required for procedure entry at BEGAC.  
No controlled airspace below 5500.

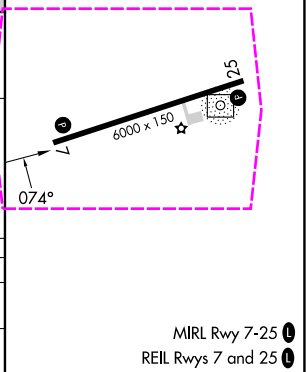
MISSED APPROACH: Climbing right turn to 1700 on 254° bearing from YP NDB/DME to RAZEL/12 DME and hold.

YAP RADIO  
**123.6** (CTAF)



VGSI and descent angles not coincident (VGSI Angle 3.00/TCH 47).

One Minute Holding Pattern		RAZEL YP 12	CABRI YP 5.7	YP 2.4	YP 1.3	YP 0.5
17500	← 254°	074°	1700	3.03°	TCH 50	
1700	074°					
		6.3 NM	3.3 NM	1.1 NM	0.5	
CATEGORY	A	B	C	D		
S-7	640-1	549 (600-1)	640-1 $\frac{5}{8}$	549 (600-1 $\frac{5}{8}$ )		
CIRCLING	640-1	549 (600-1)	640-1 $\frac{5}{8}$ 549 (600-1 $\frac{5}{8}$ )	660-2 569 (600-2)		



YAP ISLAND, FM  
Amdt 2B 27JAN22

09°30'N-138°05'E

YAP INTL (T11)(PTYA)  
**NDB/DME RWY 7**

MIRL Rwy 7-25  
REIL Rwys 7 and 25

PAC, 07 AUG 2025 to 02 OCT 2025

PAC, 07 AUG 2025 to 02 OCT 2025