

YAP ISLAND, FM

AL-6048 (FAA)

25163

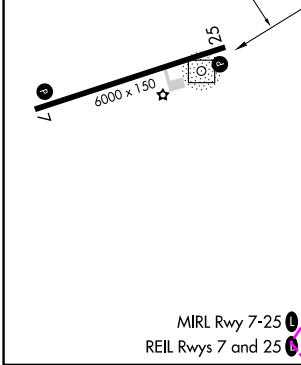
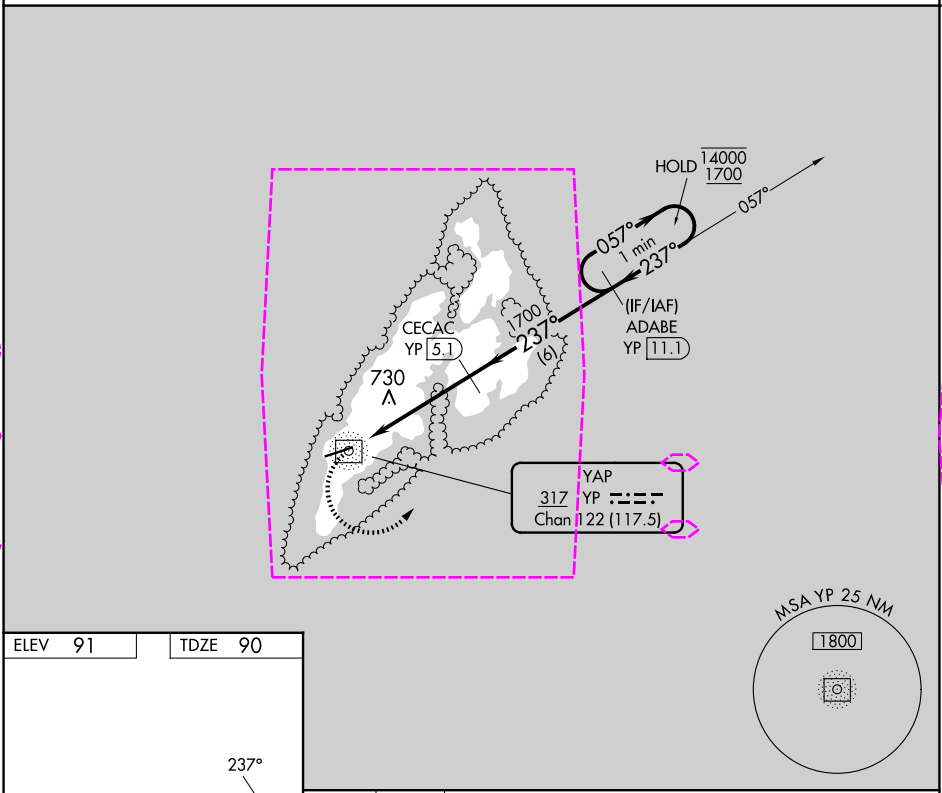
NDB/DME YP 317	APP CRS 237°	Rwy Ldg 6000 TDZE 90 Apt Elev 91
Chan 122 (117.5)		

NDB/DME RWY 25
YAP INTL (T11)(PTYA)

⚠ Circling NA north of Rwy 7-25.
No controlled airspace below 5500.

MISSED APPROACH: Climbing left turn to 1800 on 057° bearing from YP NDB/DME to ADABE/11.1 DME and hold.

YAP RADIO
123.6 (CTAF)



	1800 YP 057°	ADABE YP 11.1	CECAC YP 5.1	ADABE YP 11.1	One Minute Holding Pattern
	YP NDB/DME	YP 3	237° 1700	057° 14000 237° 1700	
	2.8 NM	2.1 NM	6 NM		
CATEGORY	A	B	C	D	
S-25	1040-1¼ 950 (1000-1¼)	1040-1½ 950 (1000-1½)	1040-3 950 (1000-3)		
	1040-1¼ 949 (1000-1¼)	1040-1½ 949 (1000-1½)	1040-3 949 (1000-3)		

YAP ISLAND, FM
Orig-C 27JAN22

09°30'N-138°05'E

YAP INTL (T11)(PTYA)
NDB/DME RWY 25

PAC, 12 JUN 2025 to 07 AUG 2025

PAC, 12 JUN 2025 to 07 AUG 2025

YAP ISLAND, FM

AL-6048 (FAA)

25219

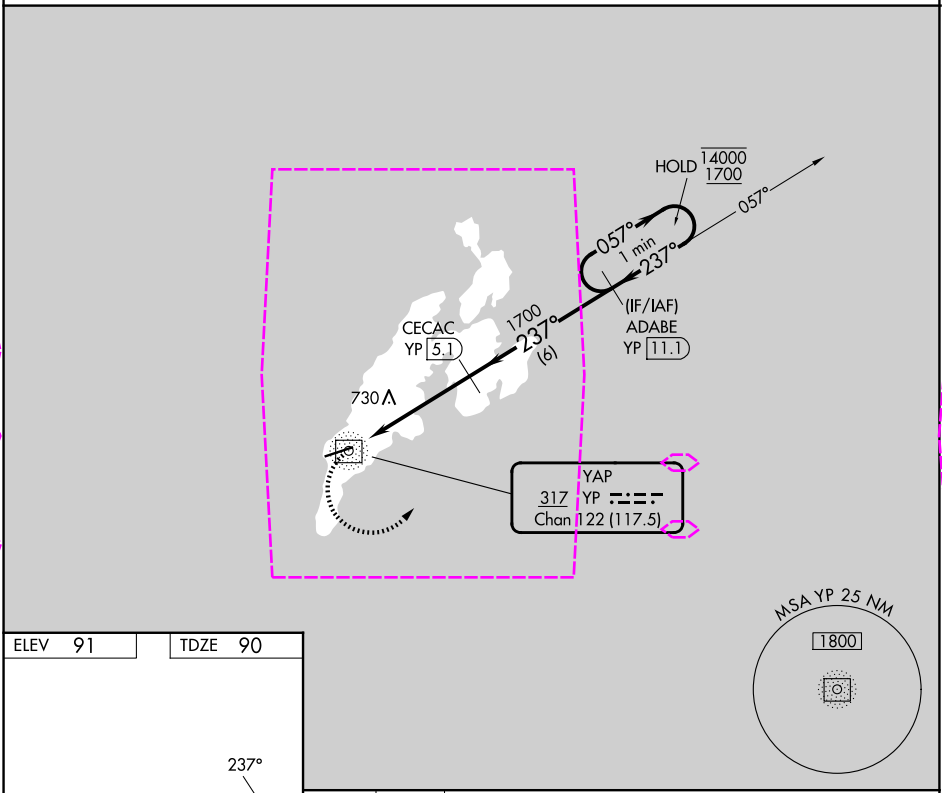
NDB/DME YP 317	APP CRS 237°	Rwy Ldg TDZE 90	6000
Chan 122 (117.5)		Apt Elev 91	

NDB/DME RWY 25
YAP INTL (T11)(PTYA)

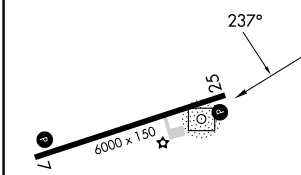
⚠ Circling NA north of Rwy 7-25.
No controlled airspace below 5500.

MISSED APPROACH: Climbing left turn to 1800 on 057° bearing from YP NDB/DME to ADABE/11.1 DME and hold.

YAP RADIO
123.6 (CTAF)



ELEV 91	TDZE 90
---------	---------



	1800 YP 057°	ADABE YP 11.1	CECAC YP 5.1	ADABE YP 11.1	One Minute Holding Pattern
	YP NDB/DME	YP 3	237°	057°	14000 1700
	2.8 NM	2.1 NM	6 NM		
CATEGORY	A	B	C	D	
S-25	1040-1¼ 950 (1000-1¼)	1040-1½ 950 (1000-1½)	1040-3	950 (1000-3)	
	1040-1¼ 949 (1000-1¼)	1040-1½ 949 (1000-1½)	1040-3	949 (1000-3)	

MIRL Rwy 7-25
REIL Rwy 7 and 25

CIRCLING

YAP ISLAND, FM
Orig-C 27JAN22

09°30'N-138°05'E

YAP INTL (T11)(PTYA)
NDB/DME RWY 25

PAC, 07 AUG 2025 to 02 OCT 2025

PAC, 07 AUG 2025 to 02 OCT 2025