

YAP ISLAND, FM

AL-6048 (FAA)

25219

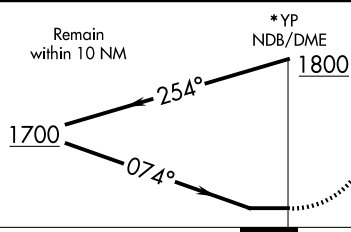
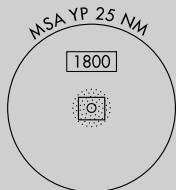
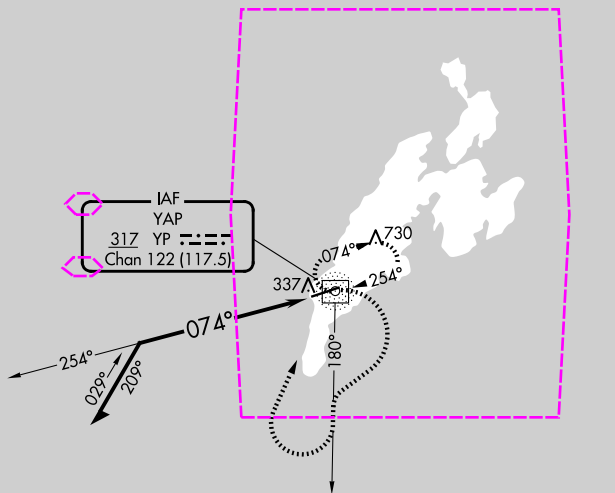
NDB/DME YP 317	APP CRS 074°	Rwy Ldg TDZE Apt Elev	6000 91 91
Chan 122 (117.5)			

NDB RWY 7
YAP INTL (T11)(PTYA)

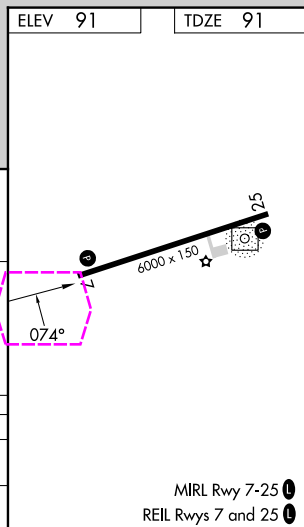
- ⚠** Circling NA north of Rwy 7-25.
⚠ Rwy 7 helicopter visibility reduction below $\frac{3}{4}$ SM NA.
 No controlled airspace below 5500 feet.

MISSED APPROACH: Climbing right turn to 1800 on 180° bearing from YP NDB/DME then right turn direct YP NDB/DME and hold.

YAP RADIO
123.6 (CTAF)



*YP NDB/DME arrivals descend to 1800 in YP NDB/DME holding pattern (E, RT, 254° inbound) prior to commencing approach.



CATEGORY	A	B	C	D
S-7	820-1 729 (800-1)	820-2 729 (800-2)	820-2 729 (800-2)	820-2 729 (800-2)
CIRCLING	820-1 729 (800-1)	820-2 729 (800-2)	820-2 729 (800-2)	820-2 729 (800-2)

YAP ISLAND, FM
Amdt 2B 27JAN22

09°30'N-138°05'E

YAP INTL (T11)(PTYA)
NDB RWY 7

MIRL Rwy 7-25
REIL Rwy 7 and 25

PAC, 07 AUG 2025 to 02 OCT 2025

PAC, 07 AUG 2025 to 02 OCT 2025