

YAP ISLAND, FM

AL-6048 (FAA)

25163

NDB/DME YP 317	APP CRS 237°	Rwy Ldg 6000 TDZE 90 Apt Elev 91
Chan 122 (117.5)		

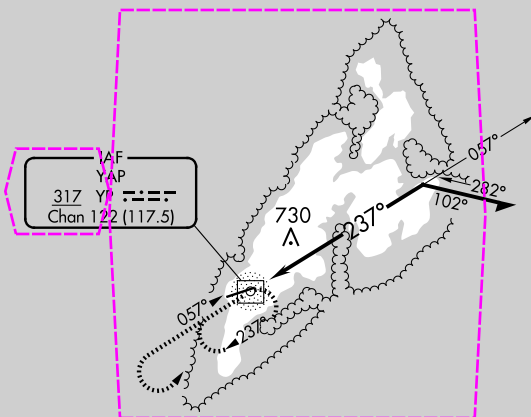
NDB RWY 25
YAP INTL (T11)(PTYA)



Circling NA north of Rwy 7-25.
No controlled airspace below 5500.

MISSED APPROACH: Climb to 1800 then left turn direct
YP NDB/DME and hold.

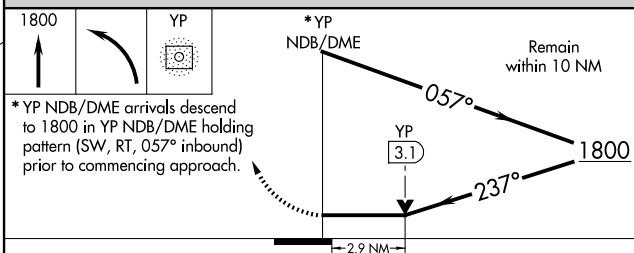
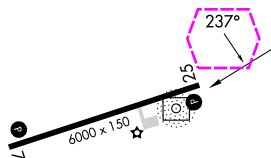
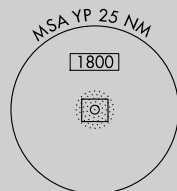
YAP RADIO
123.60 (CTAF)



PAC, 12 JUN 2025 to 07 AUG 2025

PAC, 12 JUN 2025 to 07 AUG 2025

ELEV 91	TDZE 90
---------	---------



CATEGORY	A	B	C	D
S-25	1080-1¼ 990 (1000-1¼)	1080-1½ 990 (1000-1½)	1080-3	990 (1000-3)
CIRCLING	1080-1¼ 989 (1000-1¼)	1080-1½ 989 (1000-1½)	1080-3	989 (1000-3)

MIRL Rwy 7-25 ①
REIL Rwy 7 and 25 ①

YAP ISLAND, FM
Orig-C 27JAN22

09°30'N-138°05'E

YAP INTL (T11)(PTYA)
NDB RWY 25

YAP ISLAND, FM

AL-6048 (FAA)

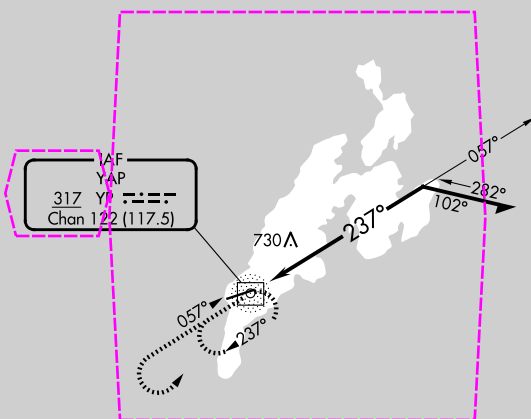
25219

NDB/DME YP 317 Chan 122 (117.5)	APP CRS 237°	Rwy Ldg 6000 TDZE 90 Apt Elev 91
---	------------------------	---

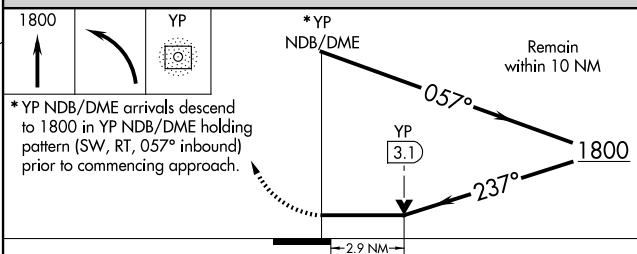
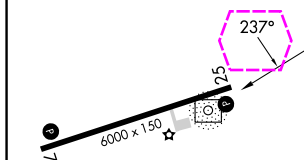
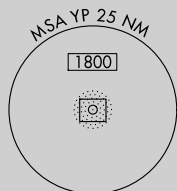
NDB RWY 25
YAP INTL (T11)(PTYA)

<p>⚠</p> <p>Circling NA north of Rwy 7-25. No controlled airspace below 5500.</p>	<p>MISSED APPROACH: Climb to 1800 then left turn direct YP NDB/DME and hold.</p>
--	---

YAP RADIO
123.60 (CTAF)



ELEV 91	TDZE 90
---------	---------



CATEGORY	A	B	C	D
S-25	1080-1¼ 990 (1000-1¼)	1080-1½ 990 (1000-1½)	1080-3	990 (1000-3)
CIRCLING	1080-1¼ 989 (1000-1¼)	1080-1½ 989 (1000-1½)	1080-3	989 (1000-3)

MIRL Rwy 7-25 **⓪**
REIL Rwys 7 and 25 **⓪**

YAP ISLAND, FM
Orig-C 27JAN22

09°30'N-138°05'E

YAP INTL (T11)(PTYA)
NDB RWY 25

PAC, 07 AUG 2025 to 02 OCT 2025

PAC, 07 AUG 2025 to 02 OCT 2025