

(JPOOL7, TTT) 24305

AL-6039 (FAA)

JOE POOL SEVEN DEPARTURE

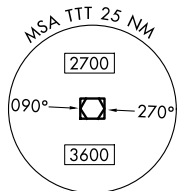
DALLAS-FORT WORTH INTL (DFW)
DALLAS-FORT WORTH, TEXAS

TOP ALTITUDE:
RWYS 13L/R, 17L/C/R, 18L/R,
35L/C/R, 36L/R: 10000
RWYS 31L/R: 5000

MAVERICK
113.1 TTT
Chan 78

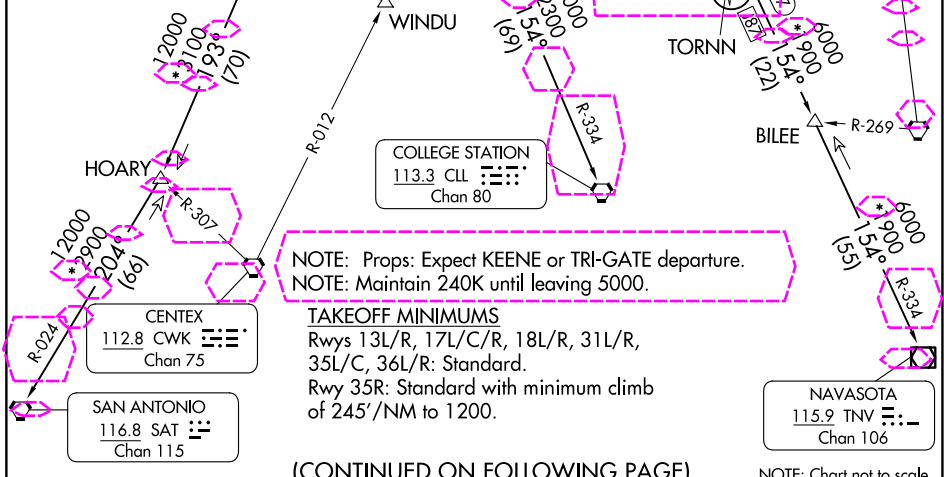
RADAR and DME required.

LONE STAR DEP CON
125.125 353.95 (Rwys 17C/R, 18L/R)
126.475 363.15 (Rwys 36L/R)
118.55 290.35 (Rwys 35L/C)
D-ATIS DEP 135.925
CLNC DEL 128.25
CPDLC
GND CON
121.65 121.8 (EAST)
121.85 (WEST)
DFW TOWER
126.55 127.5 (EAST)
124.15 134.9 (WEST)



SC-2, 10 JUL 2025 to 07 AUG 2025

SC-2, 10 JUL 2025 to 07 AUG 2025



NOTE: Props: Expect KEENE or TRI-GATE departure.
NOTE: Maintain 240K until leaving 5000.

TAKEOFF MINIMUMS
Rwys 13L/R, 17L/C/R, 18L/R, 31L/R,
35L/C, 36L/R: Standard.
Rwy 35R: Standard with minimum climb
of 245'/NM to 1200.

(CONTINUED ON FOLLOWING PAGE)

NOTE: Chart not to scale.

JOE POOL SEVEN DEPARTURE

(JPOOL7, TTT) 25JAN24

DALLAS-FORT WORTH, TEXAS
DALLAS-FORT WORTH INTL (DFW)

(JPOOL8, TTT) 25219

AL-6039 (FAA)

DALLAS-FORT WORTH INTL (DFW)
DALLAS-FORT WORTH, TEXAS

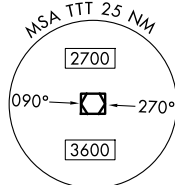
JOE POOL EIGHT DEPARTURE

TOP ALTITUDE:

RWYS 13L/R, 17L/C/R, 18L/R,
35L/C/R, 36L/R: 10000
RWYS 31L/R: 5000MAVERICK
113.1 TTT
Chan 78

RADAR and DME required.

LONE STAR DEP CON
125.125 353.95 (17C/R, 18L/R)
126.475 363.15 (36L/R)
118.55 290.35 (35L/C)
D-ATIS DEP
135.925
CLNC DEL
128.25
CPDLC
GND CON
121.65 121.8 (E)
121.85 (W)
DFW TOWER
126.55 127.5 (E)
124.15 134.9 (W)



NELYN

JASPA

ARDIA

DARTZ

BRDEN

ELLVR

TORN

BILEE

HOARY

COLLEGE STATION
113.3 CLL
Chan 80

NOTE: Props: Expect KEENE or TRI-GATE DEPARTURE.
NOTE: Maintain 240K until leaving 5000.

TAKEOFF MINIMUMS

Rwys 13L/R, 17L/C/R, 18L/R, 31L/R,
35L/C, 36L/R: Standard.
Rwy 35R: Standard with minimum climb
of 245'/NM to 1200.

CENTEX
112.8 CWK
Chan 75SAN ANTONIO
116.8 SAT
Chan 115LEONA
110.8 LOA
Chan 45NAVASOTA
115.9 TNV
Chan 106

(CONTINUED ON FOLLOWING PAGE)

NOTE: Chart not to scale.

JOE POOL EIGHT DEPARTURE

(JPOOL8, TTT) 07AUG25

DALLAS-FORT WORTH, TEXAS
DALLAS-FORT WORTH INTL (DFW)

SC-2, 07 AUG 2025 to 04 SEP 2025

SC-2, 07 AUG 2025 to 04 SEP 2025