

APP CRS	Rwy Idg	5000
359°	TDZE	1321
	Apt Elev	1321

RNAV (GPS) RWY 36
FLOYD W JONES LEBANON (LBO)

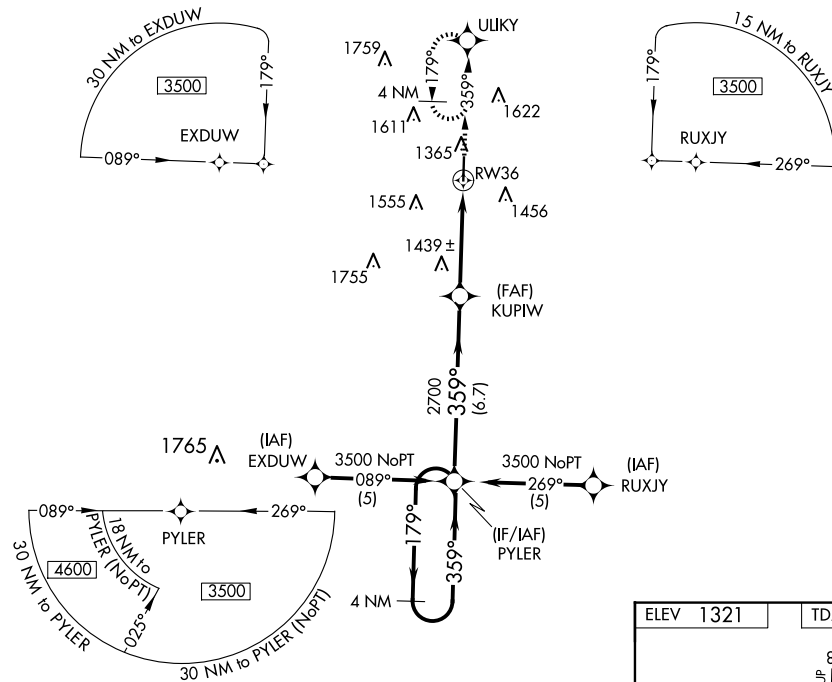
T setting: increase LNAV/VNAV DA to 1786 feet and all visibilities $\frac{1}{8}$ SM; increase
A NA all MDAs 120 feet and LNAV visibility Cat C $\frac{3}{8}$ SM, Cat D $\frac{1}{8}$ and Circling visibility
Cat C/D $\frac{1}{2}$ SM. Baro-VNAV NA when using Springfield-Branson Ntl altimeter setting.
Baro-VNAV NA below -17° C (1° F). DME/DME RNP-0.3 NA.

MISSED APPROACH: Climb to 3500 direct ULKY and hold.

AWOS-3PT
118.975

SPRINGFIELD APP CON
121.1 290.5

CLNC DEL
123.725

UNICOM
122.8 (CTAF) **L**

Holding Pattern

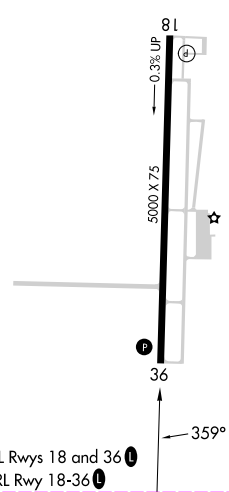
* LNAV only, VDP NA when using Springfield-Branson Ntl altimeter setting.

3500



*1.1 NM to RW36

CATEGORY	A	B	C	D
GLS PA DA	NA			
LNAV/VNAV DA	1680-1¼ 359 (400-1¼)			
LNAV MDA	1700-1 379 (400-1)			1700-1¼ 379 (400-1¼)
CIRCLING	1820-1 499 (500-1)	1860-1 539 (600-1)	1980-1¾ 659 (700-1¾)	1980-2 659 (700-2)



LEBANON, MISSOURI
Orig-C 16JUN22

37°39'N-92°39'W

FLOYD W JONES LEBANON (LBO)
RNAV (GPS) RWY 36

APP CRS
359°

Rwy Ldg
TDZE
1321

Apt Elev
1321

RNAV (GPS) RWY 36
FLOYD W JONES LEBANON (LBO)

RNP APCH - GPS.

▼ Baro-VNAV and VDP NA when using OZS altimeter setting. For uncompensated Baro-VNAV systems, LNAV/VNAV NA below -17°C or above 54°C. Rwy 36 helicopter visibility reduction below ¾ SM NA. When local altimeter setting not received, use OZS altimeter setting: increase LNAV/VNAV DA to 1675 feet; increase all MDAs 100 feet and LNAV visibility Cats C and D ¾ SM, and Circling visibility Cats C and D ½ SM.

MISSED APPROACH: Climb to 3500 direct WIKGI and hold.

AWOS-3PT 118.975	SPRINGFIELD APP CON 121.1 290.5	CLNC DEL 123.725	UNICOM 122.8 (CTAF) 0
----------------------------	---	----------------------------	---------------------------------

