

APP CRS
179°

Rwy Idg
TDZE
1316

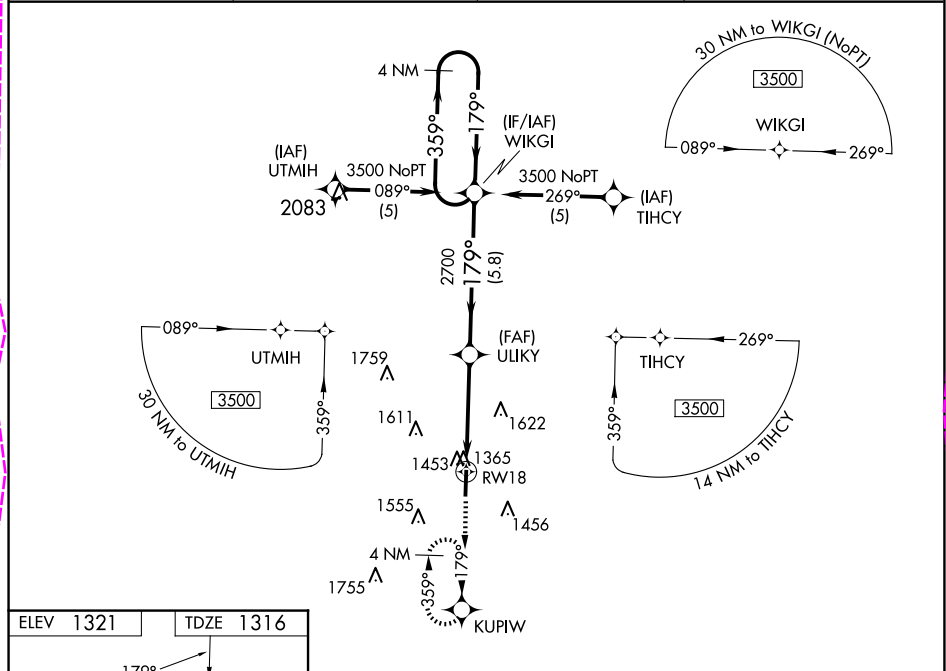
Apt Elev
1321

RNAV (GPS) RWY 18
FLOYD W JONES LEBANON (LBO)

When local altimeter setting not received, use Springfield-Branson Ntl altimeter setting: increase LNAV/VNAV DA to 2043 feet; increase all MDAs 120 feet and Circling visibility Cat C/D ½ SM. Baro-VNAV NA when using Springfield-Branson Ntl altimeter setting. Baro-VNAV NA below -17° C (1° F). DME/DME RNP-0.3 NA.

MISSED APPROACH: Climb to 3500 direct KUPIW and hold.

AWOS-3PT 118.975	SPRINGFIELD APP CON 121.1 290.5	CLNC DEL 123.725	UNICOM 122.8 (CTAF) 0
----------------------------	-------------------------------------------	----------------------------	---------------------------------



ELEV 1321 TDZE 1316

3500 KUPIW

VGSI and descent angles not coincident (VGSI Angle 3.00/ TCH 40).

* LNAV only, VDP NA when using Springfield-Branson Ntl altimeter setting.

4 NM Holding Pattern

WIKGI

ULIKY

RW18

1.3

2.9 NM

5.8 NM

3500

179°

359°

GP 3.00° TCH 40

CATEGORY	A	B	C	D
GLS PA DA	NA			
LNAV/VNAV DA	1937-2¼ 621 (700-2¼)			
LNAV MDA	1760-1	444 (500-1)	1760-1¼	444 (500-1¼)
CIRCLING	1820-1 499 (500-1)	1860-1 539 (600-1)	1980-1¾ 659 (700-1¾)	1980-2 659 (700-2)

APP CRS
179°

Rwy Ldg
TDZE
1316

Apt Elev
1321

RNAV (GPS) RWY 18
FLOYD W JONES LEBANON (LBO)

RNP APCH - GPS.

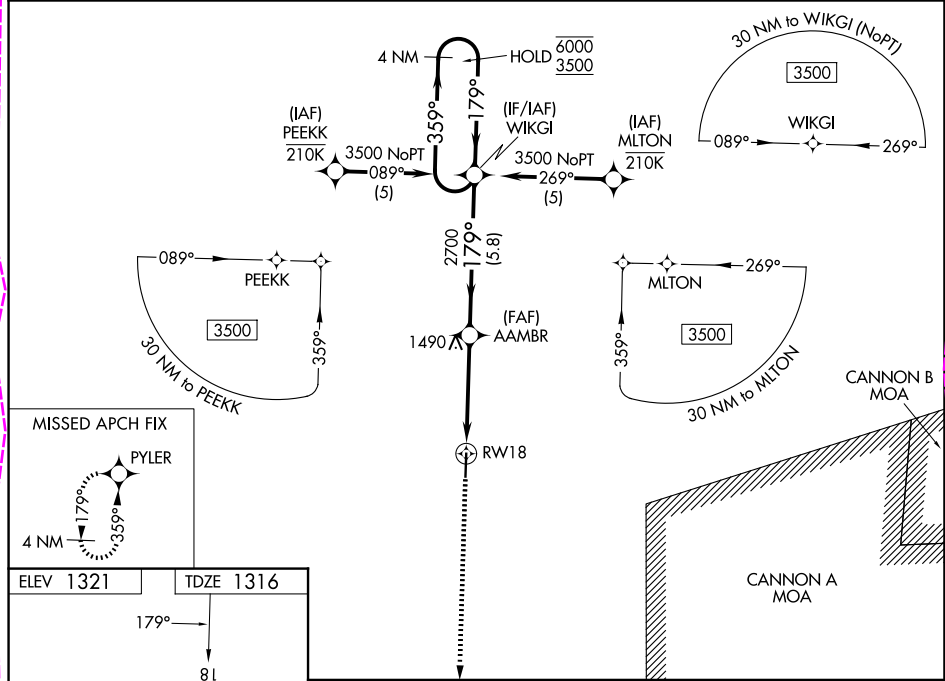
▼

▲

Baro-VNAV and VDP NA when using OZS altimeter setting. For uncompensated Baro-VNAV systems, LNAV/VNAV NA below -17°C or above 54°C. Rwy 18 helicopter visibility reduction below ¾ SM NA. When local altimeter setting not received, use OZS altimeter setting: increase LNAV/VNAV DA to 1717 feet and all visibilities ½ SM; increase all MDAs 100 feet and LNAV visibility Cats C and D ¼ SM, and Circling visibility Cats C and D ½ SM.

MISSED APPROACH: Climb to 3500 direct PYLER and hold.

AWOS-3PT 118.975	SPRINGFIELD APP CON 121.1 290.5	CLNC DEL 123.725	UNICOM 122.8 (CTAF) 0
----------------------------	-------------------------------------------	----------------------------	---------------------------------



ELEV 1321	TDZE 1316
<div>179° 81 0.3% UP 5000 X 75 36</div>	
<div>3500 PYLER 1.2 NM to RWY 18 RWY 18 AAMBR 2700 WIKGI 4 NM Holding Pattern 359° → 6000 ← 179° 3500 GP 3.00° TCH 40</div>	
CATEGORY	A B C D
LNAV/VNAV DA	1634-1 318 (400-1)
LNAV MDA	1740-1 424 (500-1) 1740-1¼ 424 (500-1¼)
CIRCLING	1780-1 459 (500-1) 1860-1 539 (600-1) 1980-1¾ 659 (700-1¾) 1980-2 659 (700-2)