

MENA, ARKANSAS

AL-6002 (FAA)

25163

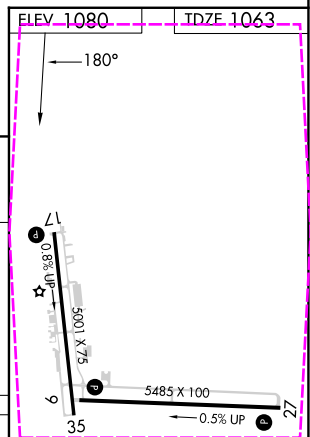
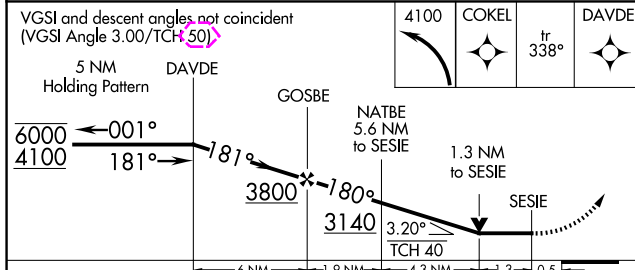
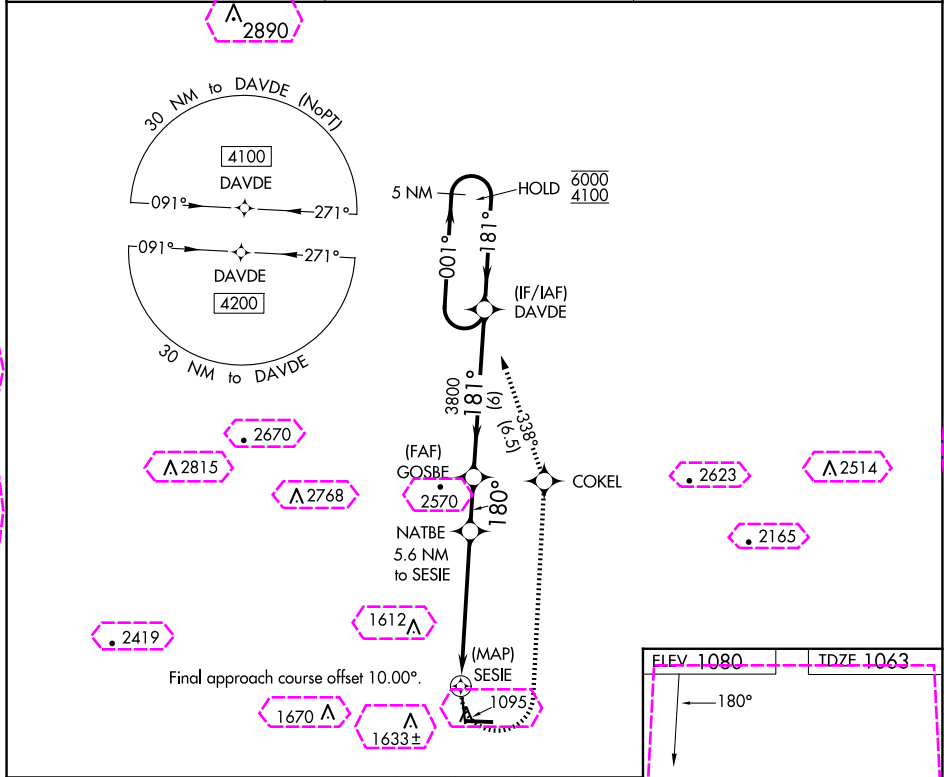
APP CRS 180°	Rwy Ldg TDZE 1063 Apt Elev 1080
------------------------	---

RNAV (GPS) RWY 17

MENA INTERMOUNTAIN MUNI (MEZ)

RNP APCH. ▼ Circling Rwy 35 NA at night. ▲ Rwy 17 helicopter visibility reduction below ¾ SM NA.	MISSED APPROACH: Climbing left turn to 4100 direct COKEI and track 338° to DAVDE and hold.
--	--

AWOS-3 118.025	MEMPHIS CENTER 126.1 269.0	UNICOM 122.8 (CTAF) 0
--------------------------	--------------------------------------	--



CATEGORY	A	B	C	D
LNAV MDA	1660-1	597 (600-1)	1660-1¼ 597 (600-1¼)	NA
CIRCLING	1840-1 760 (800-1)	2140-1½ 1060 (1100-1½)	2220-3 1140 (1200-3)	NA

MIRL Rwy 17-35 **0**
MIRL Rwy 9-27
REIL Rwy 9, 27 and 35

MENA, ARKANSAS
Amdt 1 05DEC19

34°33'N-94°12'W

MENA INTERMOUNTAIN MUNI (MEZ)
RNAV (GPS) RWY 17

SC-1, 10 JUL 2025 to 07 AUG 2025

SC-1, 10 JUL 2025 to 07 AUG 2025

MENA, ARKANSAS

AL-6002 (FAA)

25219

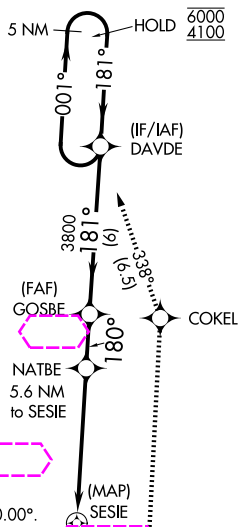
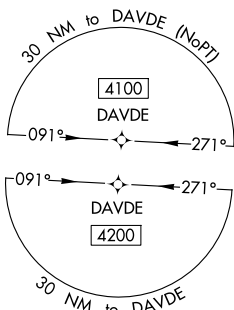
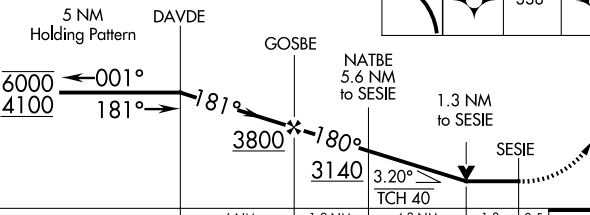
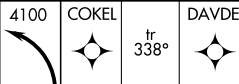
APP CRS
180°Rwy Ldg **5001**
TDZE **1063**
Apt Elev **1080****RNAV (GPS) RWY 17**

MENA INTERMOUNTAIN MUNI (MEZ)

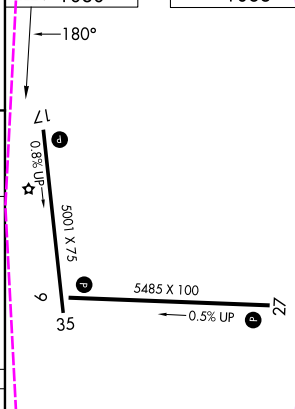
RNP APCH.

▼ Circling Rwy 35 NA at night.

▲ Rwy 17 helicopter visibility reduction below ¾ SM NA.

MISSED APPROACH: Climbing left turn to 4100 direct
COKEI and track 338° to DAVDE and hold.AWOS-3
118.025MEMPHIS CENTER
126.1 269.0UNICOM
122.8 (CTAF) 0VGSI and descent angles not coincident
(VGSI Angle 3.00/TCH 1.53)

ELEV 1080 TDZE 1063



CATEGORY	A	B	C	D
RNAV MDA	1660-1	597 (600-1)	1660-1¾ 597 (600-1¾)	NA
CIRCLING	1840-1 760 (800-1)	2140-1½ 1060 (1100-1½)	2220-3 1140 (1200-3)	NA

MIRL Rwy 17-35 0
MIRL Rwy 9-27
REIL Rwy 9, 27 and 35

MENA, ARKANSAS

Amdt 1 05DEC19

34°33'N-94°12'W

MENA INTERMOUNTAIN MUNI (MEZ)

RNAV (GPS) RWY 17

SC-1, 07 AUG 2025 to 04 SEP 2025

SC-1, 07 AUG 2025 to 04 SEP 2025