

MENA, ARKANSAS


AL-6002 (FAA)

25163

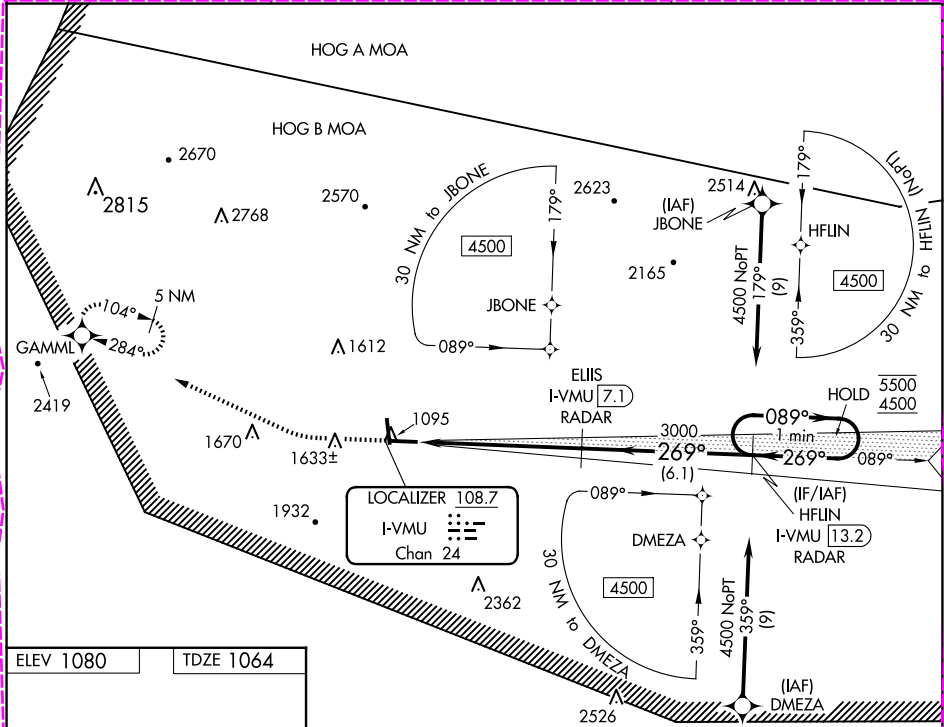
LOC/DME I-VMU <b>108.7</b> Chan <b>24</b>	APP CRS <b>269°</b>	Rwy Ldg TDZE Apt Elev <b>5485</b> <b>1064</b> <b>1080</b>
---	------------------------	--

# ILS or LOC RWY 27

MENA INTERMOUNTAIN MUNI (MEZ)

DME or RADAR required. RNP APCH - GPS.	MISSED APPROACH: Climb to 1800 then climbing right turn to 6000 direct GAMML and hold, continue climb-in-hold to 6000.
 Circling Rwy 35 NA at night.	

AWOS-3 <b>118.025</b>	MEMPHIS CENTER <b>126.1 269.0</b>	UNICOM <b>122.8 (CTAF) 0</b>
--------------------------	--------------------------------------	---------------------------------



MENA, ARKANSAS

AL-6002 (FAA)

25219

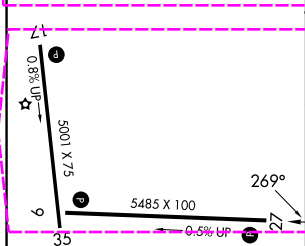
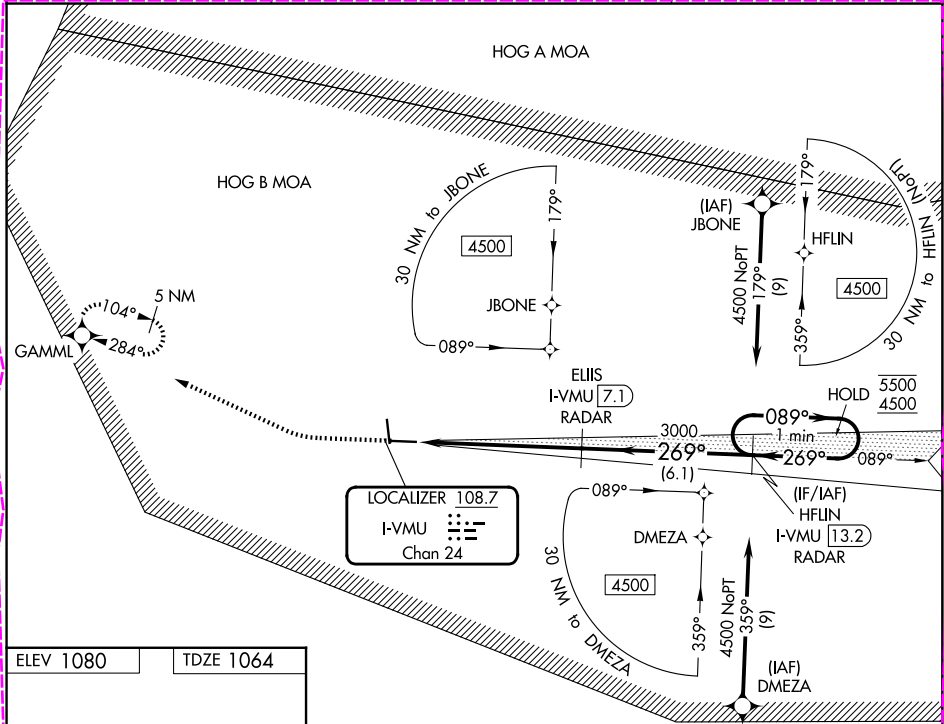
LOC/DME I-VMU <b>108.7</b> Chan <b>24</b>	APP CRS <b>269°</b>	Rwy Ldg <b>5485</b> TDZE <b>1064</b> Apt Elev <b>1080</b>
---	------------------------	---

# ILS or LOC RWY 27

MENA INTERMOUNTAIN MUNI (MEZ)

DME or RADAR required. RNP APCH - GPS.	MISSED APPROACH: Climb to 1800 then climbing right turn to 6000 direct GAMML and hold, continue climb-in-hold to 6000.
Circling Rwy 35 NA at night.	

AWOS-3 <b>118.025</b>	MEMPHIS CENTER <b>126.1 269.0</b>	UNICOM <b>122.8 (CTAF) 0</b>
--------------------------	--------------------------------------	---------------------------------



MIRL Rwy 17-35 1	
MIRL Rwy 9-27	
REIL Rws 9, 27 and 35	
FAF to MAP 6 NM	
Knots	60 90 120 150 180
Min:Sec	6:00 4:00 3:00 2:24 2:00

1800	6000	GAMML	VGSI and ILS glidepath not coincident (VGSI Angle 3.00/TCH 49).
ELIIS I-VMU 7.1 RADAR	HFLIN I-VMU 13.2 RADAR	One Minute Holding Pattern	
I-VMU 1.1	I-VMU 2.8	3000	GS 3.00° TCH 56
1.6 NM	4.3 NM	6.1 NM	
CATEGORY	A	B	C
S-ILS 27	1502-1 1/4	438 (500-1 1/4)	NA
S-LOC 27	1620-1	556 (600-1)	1620-1 5/8 556 (600-1 1/8)
CIRCLING	1840-1 760 (800-1)	2140-1 1/2 1060 (1100-1 1/2)	2220-3 1140 (1200-3)

MENA, ARKANSAS  
Amdt 2 02DEC21

34°33'N-94°12'W

# ILS or LOC RWY 27

SC-1, 07 AUG 2025 to 04 SEP 2025