

CORSICANA, TEXAS

AL-5998 (FAA)

25135

VORTAC CQY 114.8 Chan 95	APP CRS 218°	Rwy Idg TDZE Apt Elev N/A N/A 449
--	------------------------	---

VOR/DME-A

C DAVID CAMPBELL FLD-CORSICANA MUNI (CRS)

▼ Procedure NA at night. Circling NA to Rws 2 and 20.
▲ NA

MISSED APPROACH: Climb to 1500 then climbing left turn to 2000 via CQY VORTAC R-218 to YEEST/CQY 8 DME and hold.

ASOS
120.675

FORT WORTH CENTER
135.25 265.1

UNICOM
122.8 (CTAF) 0

Procedure NA for arrivals at CQY VORTAC
on airway radials 163 CW 263.

IAF
CEDAR CREEK
114.8 CQY
Chan **95**

4 NM

2000 NoPT
218° (8)

▲ 1156

▲ 706

▲ 600

610±

1308 ▲

MSA CQY 25 NM

2400

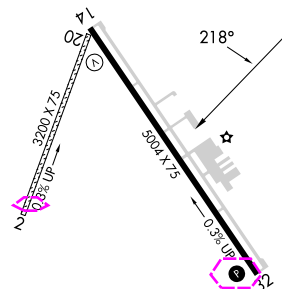
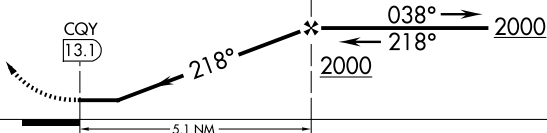
ELEV 449

1500
2000
CQY R-218

YEEST
CQY 8

YEEST
CQY 8

4 NM
Holding Pattern



CATEGORY	A	B	C	D
CIRCLING	860-1 411 (500-1)	960-1 511 (600-1)	1060-1¾ 611 (700-1¾)	1080-2 631 (700-2)

MIRL Rwy 14-32 0
REIL Rws 14 and 32

CORSICANA, TEXAS
Amdt 1D 26MAR20

C DAVID CAMPBELL FLD-CORSICANA MUNI (CRS)

32°02'N - 96°24'W

VOR/DME-A

SC-2, 10 JUL 2025 to 07 AUG 2025

SC-2, 10 JUL 2025 to 07 AUG 2025

CORSICANA, TEXAS

AL-5998 (FAA)

25219

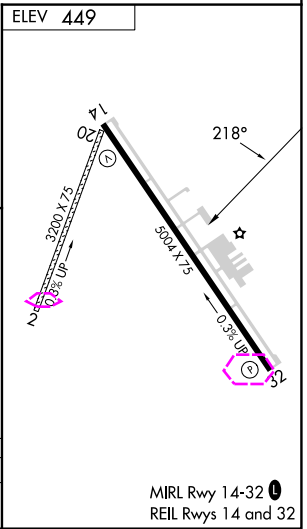
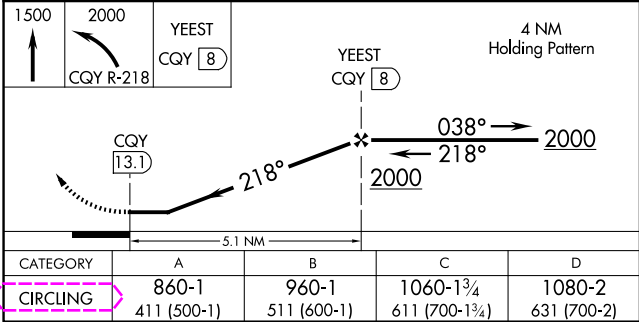
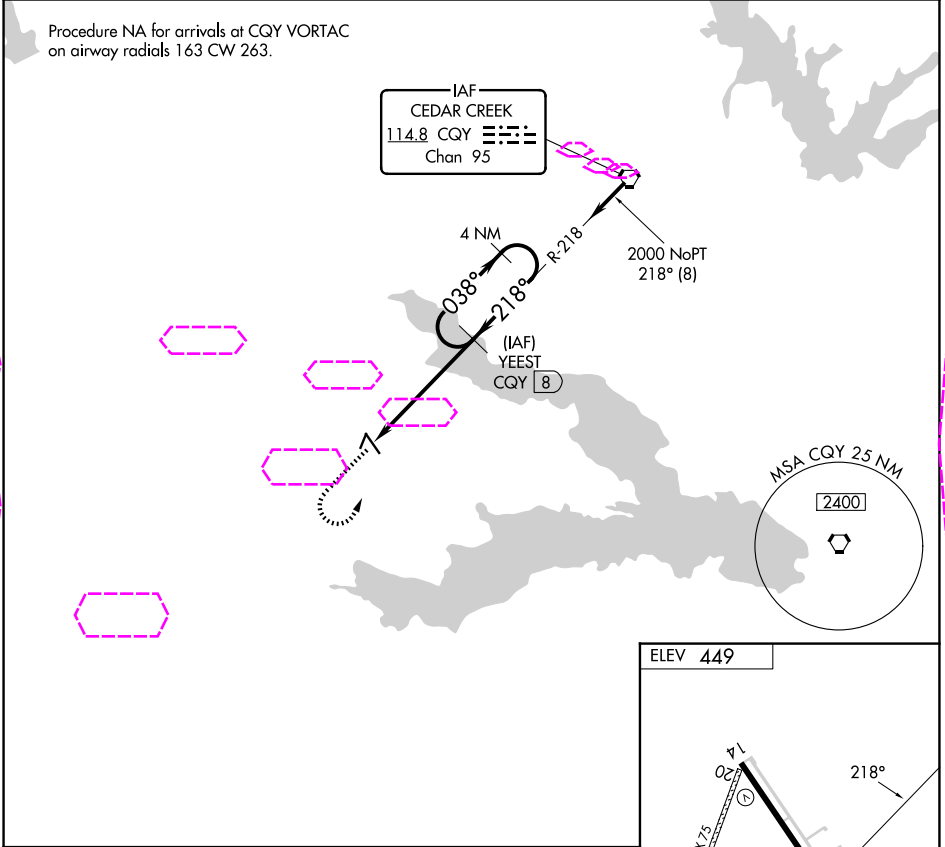
VORTAC CQY	APP CRS	Rwy Ldg	N/A
114.8	218°	TDZE	N/A
Chan 95		Apt Elev	449

VOR/DME-A

C DAVID CAMPBELL FLD-CORSICANA MUNI (CRS)

<p>▼ Procedure NA at night. Circling NA to Rwys 2 and 20.</p> <p>▲ NA</p>	<p>MISSED APPROACH: Climb to 1500 then climbing left turn to 2000 via CQY VORTAC R-218 to YEEST/CQY 8 DME and hold.</p>
---	---

ASOS 120.675	FORT WORTH CENTER 135.25 265.1	UNICOM 122.8 (CTAF) 0
-----------------	-----------------------------------	--------------------------



CORSICANA, TEXAS
Amdt 1D 26MAR20

C DAVID CAMPBELL FLD-CORSICANA MUNI (CRS)

32°02'N - 96°24'W

VOR/DME-A

MIRL Rwy 14-32 0
REIL Rws 14 and 32