

CORSICANA, TEXAS

AL-5998 (FAA)

22139

APP CRS	Rwy Idg	5004
319°	TDZE	442
	Apt Elev	449

RNAV (GPS) RWY 32

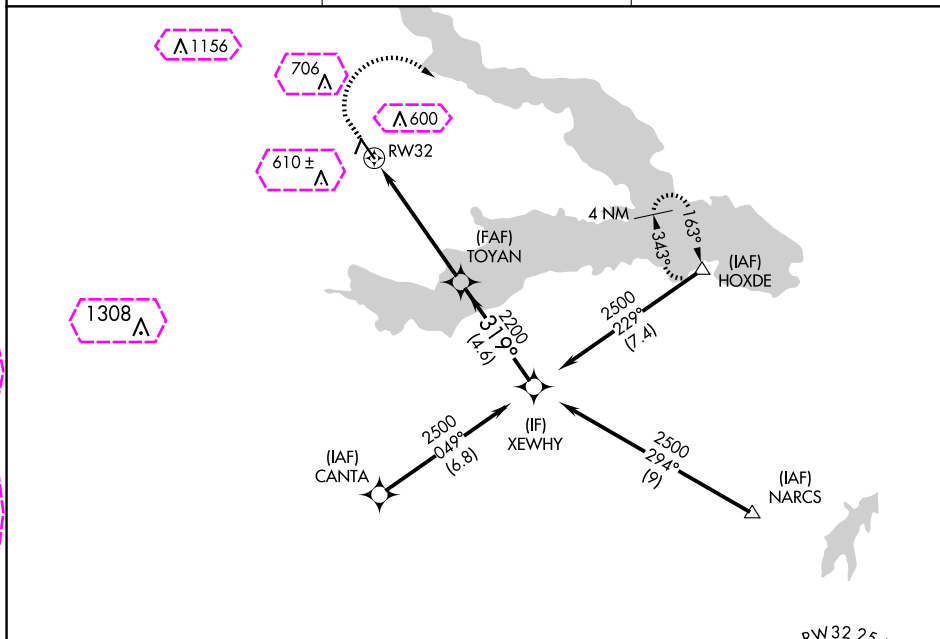
C DAVID CAMPBELL FLD-CORSICANA MUNI (CRS)

RNP APCH.

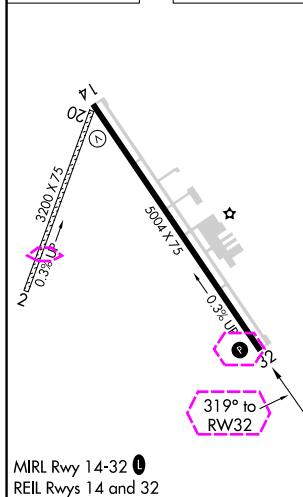
Procedure NA at night.
Rwy 32 helicopter visibility reduction below 1 SM NA.

MISSED APPROACH: Climb to 900, then climbing
right turn to 2500 direct HOXDE and hold.

ASOS 120.675	FORT WORTH CENTER 135.25 265.1	UNICOM 122.8 (CTAF) 0
-----------------	-----------------------------------	--------------------------

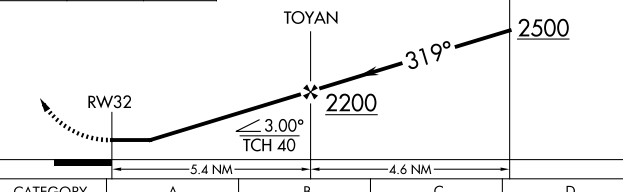


ELEV 449	TDZE 442
----------	----------



MIRL Rwy 14-32 0
REIL Rwy 14 and 32

900	2500	HOXDE
↑	↗	△

 <p>Diagram illustrating a flight path from RW32 to XEWHY. The path starts at RW32, proceeds straight for 5.4 NM, then turns 319° for 4.6 NM to XEWHY. A point TOYAN is marked on the first segment. A dashed line shows a 3.00° angle from the path to a horizontal line, labeled TCH 40.</p> <table border="1"><thead><tr><th>CATEGORY</th><th>A</th><th>B</th><th>C</th><th>D</th></tr></thead><tbody><tr><td>LNNAV MDA</td><td colspan="4">820-1 378 (400-1)</td></tr></tbody></table>					CATEGORY	A	B	C	D	LNNAV MDA	820-1 378 (400-1)			
CATEGORY	A	B	C	D										
LNNAV MDA	820-1 378 (400-1)													

CORSICANA, TEXAS
Amdt 1A 05DEC19

C DAVID CAMPBELL FLD-CORSICANA MUNI (CRS)

32°02'N-96°24'W

RNAV (GPS) RWY 32

SC-2, 10 JUL 2025 to 07 AUG 2025

SC-2, 10 JUL 2025 to 07 AUG 2025

CORSICANA, TEXAS

AL-5998 (FAA)

25219

APP CRS	Rwy Ldg	5004
319°	TDZE	442
	Apt Elev	449

RNAV (GPS) RWY 32

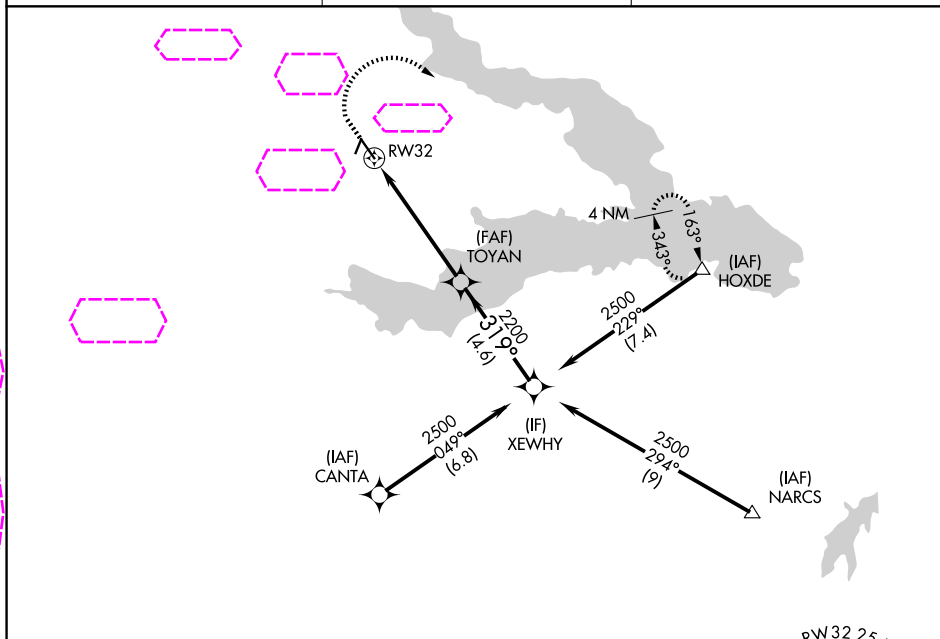
C DAVID CAMPBELL FLD-CORSICANA MUNI (CRS)

RNP APCH.

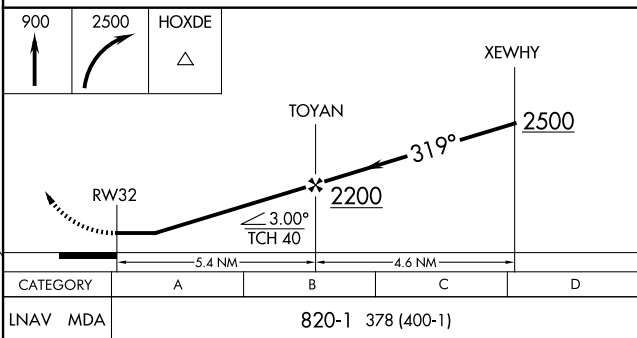
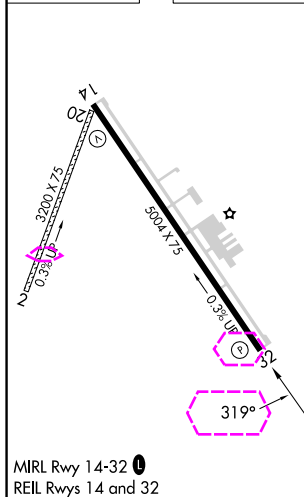
Procedure NA at night.
Rwy 32 helicopter visibility reduction below 1 SM NA.

MISSED APPROACH: Climb to 900, then climbing
right turn to 2500 direct HOXDE and hold.

ASOS 120.675	FORT WORTH CENTER 135.25 265.1	UNICOM 122.8 (CTAF) 0
-----------------	-----------------------------------	--------------------------



ELEV 449	TDZE 442
----------	----------



CORSICANA, TEXAS
Amdt 1A 05DEC19

C DAVID CAMPBELL FLD-CORSICANA MUNI (CRS)

32°02'N-96°24'W

RNAV (GPS) RWY 32

SC-2, 07 AUG 2025 to 04 SEP 2025

SC-2, 07 AUG 2025 to 04 SEP 2025