

SC-2, 10 JUL 2025 to 07 AUG 2025

CORSICANA, TEXAS

AL-5998 (FAA)

25219

APP CRS	Rwy Ldg	5004
139°	TDZE	449
	Apt Elev	449

## RNAV (GPS) RWY 14

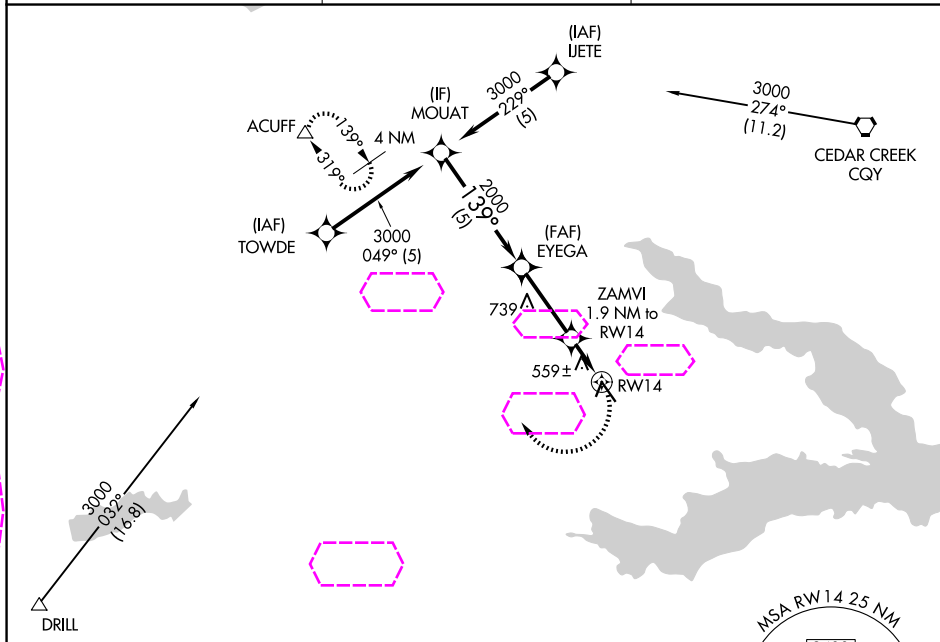
C DAVID CAMPBELL FLD-CORSICANA MUNI (CRS)

RNP APCH.

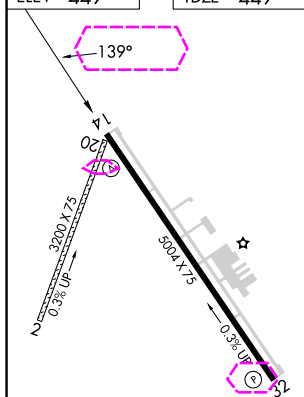
Rwy 14 helicopter visibility reduction below 1 SM NA.  
Procedure NA at night.

MISSED APPROACH: Climbing right turn to 3000  
direct ACUFF and hold.

ASOS 120.675	FORT WORTH CENTER 135.25 265.1	UNICOM 122.8 (CTAF) 0
-----------------	-----------------------------------	--------------------------



ELEV 449	TDZE 449
----------	----------



MIRL Rwy 14-32 0
REIL Rws 14 and 32

Visual Segment - Obstacles.				3000	ACUFF
				MOUAT	EYEGA
				3000	2000
				139°	
				ZAMVI	1.9 NM to RWY 14
				1040	RWY 14
				5 NM	3.1 NM
				1.9 NM	
CATEGORY	A	B	C	D	
LNAV MDA	820-1 371 (400-1)				820-1 371 (400-1 1/4)

CORSICANA, TEXAS  
Orig-D 05DEC19

C DAVID CAMPBELL FLD-CORSICANA MUNI (CRS)  
32°02'N-96°24'W

## RNAV (GPS) RWY 14

SC-2, 07 AUG 2025 to 04 SEP 2025

SC-2, 07 AUG 2025 to 04 SEP 2025