

POMPANO BEACH, FLORIDA

AL-5972 (FAA)

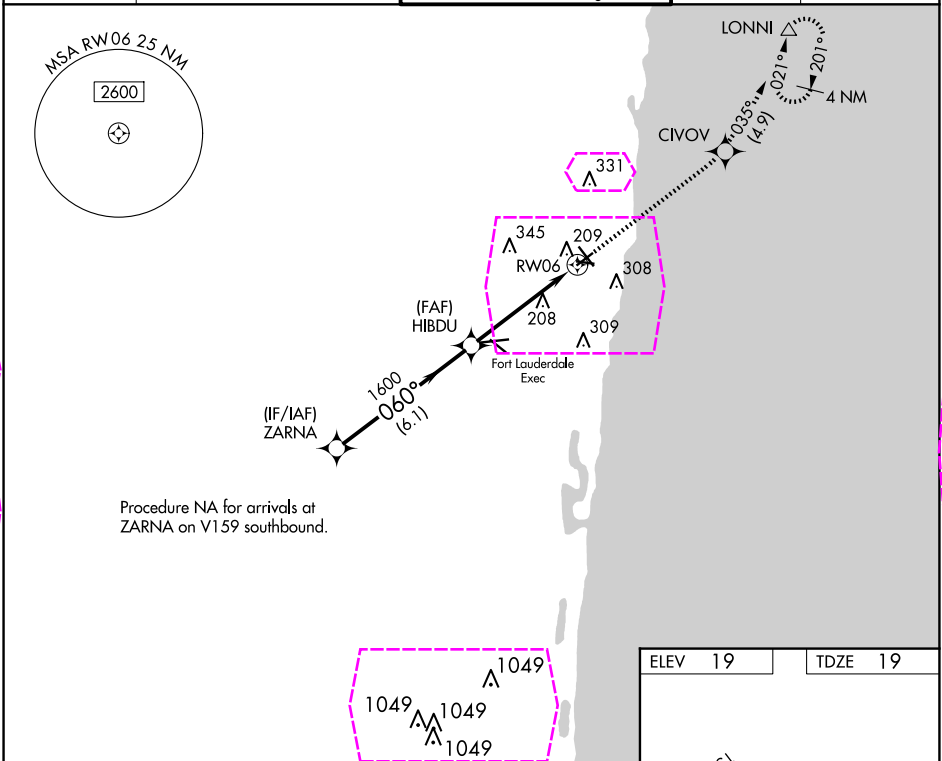
25163

WAAS CH 56603 W06A	APP CRS 060°	Rwy Ldg TDZE 19 Apt Elev 19
--	------------------------	---

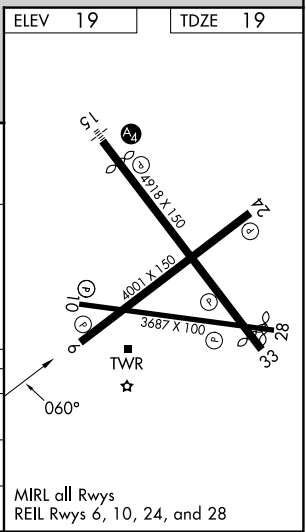
RNAV (GPS) RWY 6
POMPANO BEACH AIRPARK (PMP)

⚠ ⚠	DME/DME RNP-0.3 NA. When local altimeter setting not received, use Fort Lauderdale Exec altimeter setting. Helicopter visibility reduction below ¾ SM NA.	MISSED APPROACH: Climb to 2000 direct CIVOV and on track 035° to LONNI and hold.
----------------------	---	--

ATIS 120.55	MIAMI APP CON 119.7 306.3	POMPANO BEACH TOWER ★ 125.4 (CTAF) 0	GND CON 121.9	UNICOM 122.95
-----------------------	-------------------------------------	--	-------------------------	-------------------------



VGSI and RNAV glidepath not coincident (VGSI Angle 3.75/TCH 45).				
ZARNA		HIBDU	CIVOV	LONNI
2100		2000	tr 035°	△
GP 3.00° TCH 39		*LNAV only.		
060°		*1.2 NM to RWY 06		
1600		RWY 06		
6.1 NM		3.6 NM	1.2	
CATEGORY	A	B	C	D
LPV DA	348-1¼	329 (400-1¼)	NA	
LNAV MDA	480-1	461 (500-1)	NA	
CIRCLING	660-1	641 (700-1)	NA	



POMPANO BEACH, FLORIDA

AL-5972 (FAA)

25219

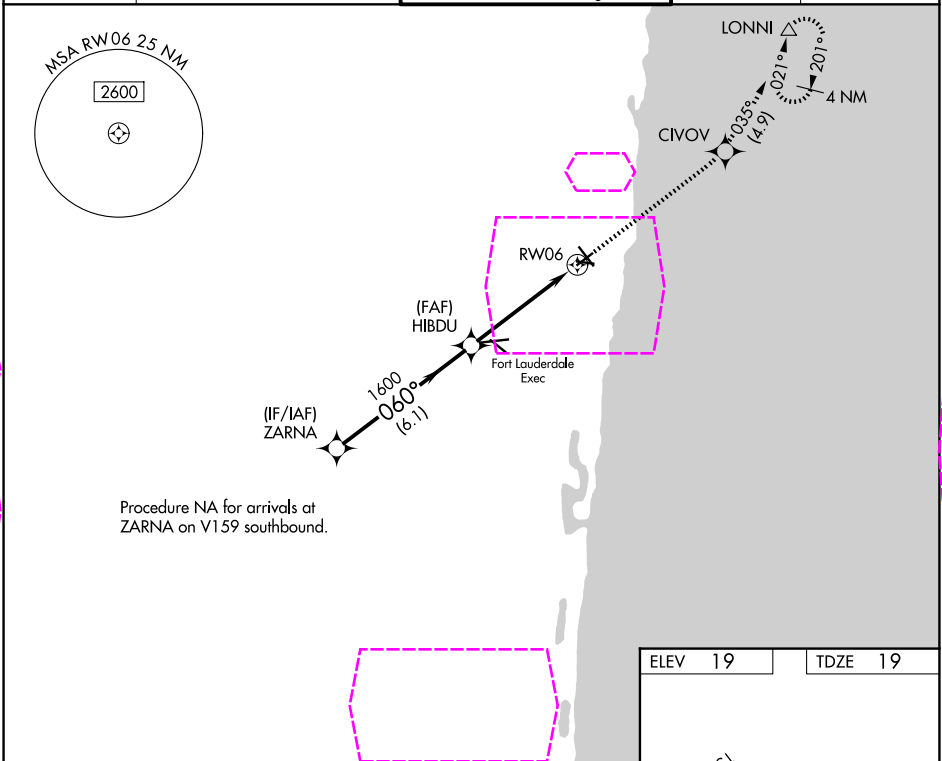
WAAS CH 56603 W06A	APP CRS 060°	Rwy Ldg TDZE 19 Apt Elev 19
--	------------------------	---

RNAV (GPS) RWY 6
POMPANO BEACH AIRPARK (PMP)

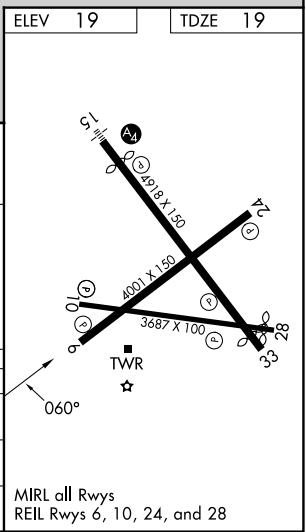
⚠ DME/DME RNP-0.3 NA. When local altimeter setting not received, use Fort Lauderdale Exec altimeter setting.
Helicopter visibility reduction below ¾ SM NA.

MISSED APPROACH: Climb to 2000 direct CIVOV and on track 035° to LONNI and hold.

ATIS 120.55	MIAMI APP CON 119.7 306.3	POMPANO BEACH TOWER ★ 125.4 (CTAF) 0	GND CON 121.9	UNICOM 122.95
-----------------------	-------------------------------------	--	-------------------------	-------------------------



VGSI and RNAV glidepath not coincident (VGSI Angle 3.75/TCH 45).				
ZARNA		HIBDU	CIVOV	LONNI
2100		2000	tr 035°	△
GP 3.00° TCH 39		*LNAV only.		
060°		*1.2 NM to RW06		
1600		RW06		
6.1 NM		3.6 NM	1.2	
CATEGORY	A	B	C	D
LPV DA	348-1¼	329 (400-1¼)	NA	
LNAV MDA	480-1	461 (500-1)	NA	
CIRCLING	660-1	641 (700-1)	NA	



SE-3, 07 AUG 2025 to 04 SEP 2025

SE-3, 07 AUG 2025 to 04 SEP 2025