

POMPANO BEACH, FLORIDA

AL-5972 (FAA)

25163

WAAS CH 40300 W33A	APP CRS 330°	Rwy Ldg TDZE 16 Apt Elev 19	4578
--	------------------------	---	-------------

RNAV (GPS) RWY 33

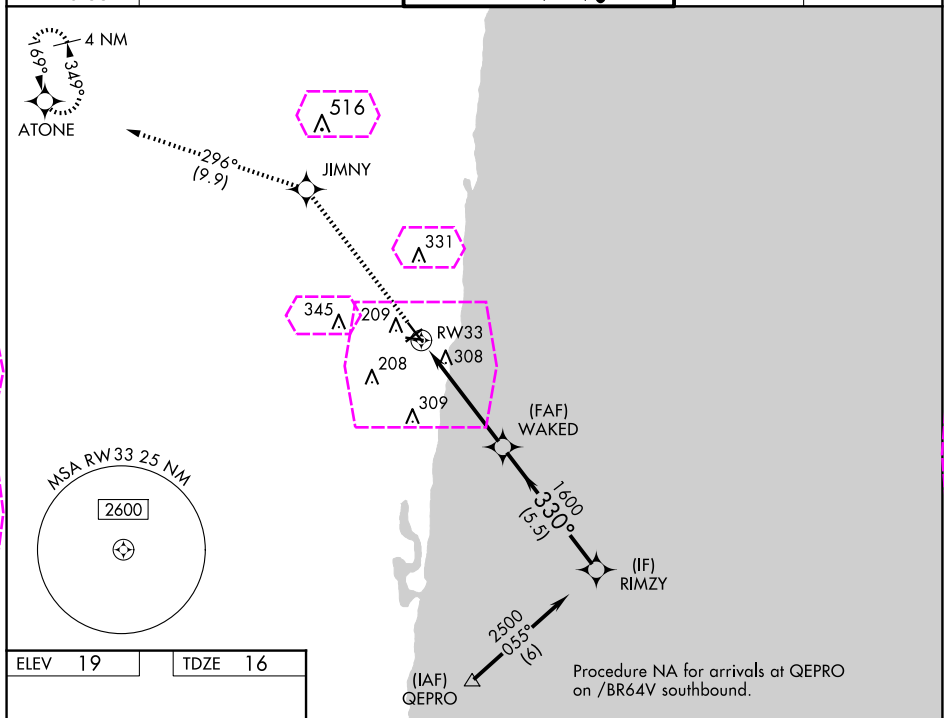
POMPANO BEACH AIRPARK (PMP)

RNP APCH - GPS.

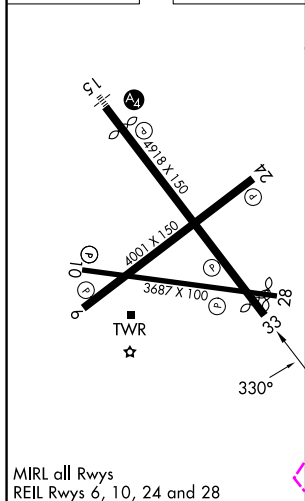
▼ Rwy 33 helicopter visibility reduction below $\frac{3}{4}$ SM NA. For uncompensated Baro-VNAV systems, LNAV/VNAV NA below 0°C or above 54°C. When local altimeter setting not received, use FXE altimeter setting. Circling Rwy 6, 10, 24, 28 NA at night.

MISSED APPROACH: Climb to 2100 direct JIMNY and on track 296° to ATONE and hold.

ATIS 120.55	MIAMI APP CON 119.7 306.3	POMPANO BEACH TOWER* 125.4 (CTAF) 0	GND CON 121.9	UNICOM 122.95
-----------------------	-------------------------------------	---	-------------------------	-------------------------



ELEV 19	TDZE 16
----------------	----------------



2100	JIMNY	tr 296°	ATONE	RIMZY
				WAKED 1600
				330° 2500
				GP 3.01° TCH 53
				4.8 NM 5.5 NM
CATEGORY	A	B	C	D
LPV DA	266-1	250 (300-1)	NA	NA
LNAV/VNAV DA	701-2	685 (700-2)	NA	NA
LNAV MDA	620-1	604 (700-1)	NA	NA
CIRCLING	660-1	641 (700-1)	NA	NA

POMPANO BEACH, FLORIDA
Amdt 1B 12JUN25

26°15'N-80°07'W

POMPANO BEACH AIRPARK (PMP)
RNAV (GPS) RWY 33

SE-3, 10 JUL 2025 to 07 AUG 2025

SE-3, 10 JUL 2025 to 07 AUG 2025

POMPANO BEACH, FLORIDA

AL-5972 (FAA)

25219

WAAS CH 40300 W33A	APP CRS 330°	Rwy Ldg TDZE 16 Apt Elev 19
--	------------------------	---

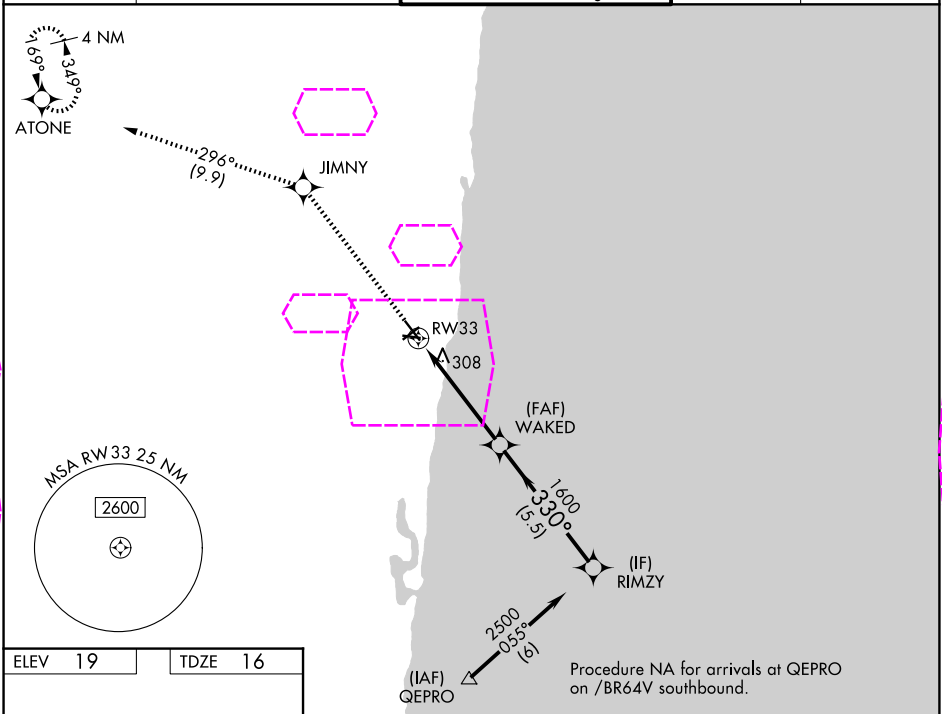
RNAV (GPS) RWY 33
POMPANO BEACH AIRPARK (PMP)

RNP APCH - GPS.

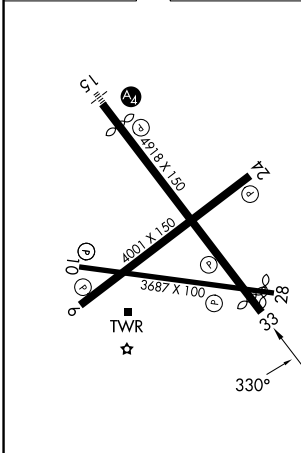
⚠ Rwy 33 helicopter visibility reduction below $\frac{3}{4}$ SM NA. For uncompensated Baro-VNAV systems, LNAV/VNAV NA below 0°C or above 54°C. When local altimeter setting not received, use FXE altimeter setting. Circling Rwy 6, 10, 24, 28 NA at night.

MISSED APPROACH: Climb to 2100 direct JIMNY and on track 296° to ATONE and hold.

ATIS 120.55	MIAMI APP CON 119.7 306.3	POMPANO BEACH TOWER* 125.4 (CTAF) 0	GND CON 121.9	UNICOM 122.95
-----------------------	-------------------------------------	---	-------------------------	-------------------------



ELEV 19	TDZE 16
----------------	----------------



2100	JIMNY	tr 296°	ATONE	RIMZY
				WAKED 1600
				330° 2500
				GP 3.01° TCH 53
				4.8 NM 5.5 NM
CATEGORY	A	B	C	D
LPV DA	266-1	250 (300-1)	NA	
LNAV/VNAV DA	701-2	685 (700-2)	NA	
LNAV MDA	620-1	604 (700-1)	NA	
CIRCLING	660-1	641 (700-1)	NA	

MIRL all Rwys
REIL Rws 6, 10, 24 and 28

POMPANO BEACH, FLORIDA

Amdt 1B 12JUN25

26°15'N-80°07'W

POMPANO BEACH AIRPARK (PMP)

RNAV (GPS) RWY 33

SE-3, 07 AUG 2025 to 04 SEP 2025

SE-3, 07 AUG 2025 to 04 SEP 2025