

POMPANO BEACH, FLORIDA

AL-5972 (FAA)

25163

WAAS CH <b>82500</b> <b>W15A</b>	APP CRS <b>150°</b>	Rwy Ldg <b>4417</b> TDZE <b>17</b> Apt Elev <b>19</b>
--	------------------------	---

# RNAV (GPS) RWY 15

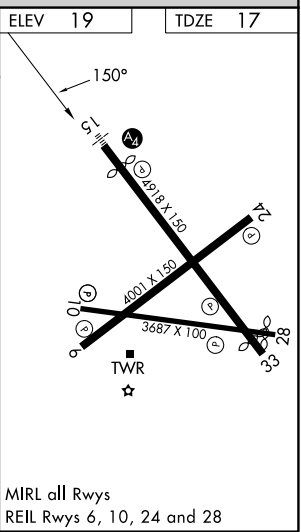
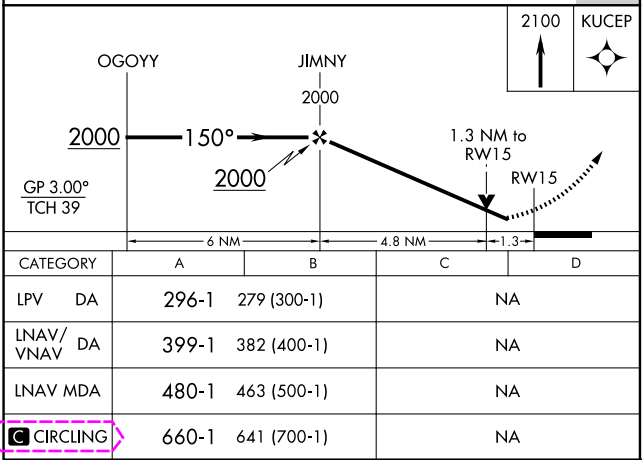
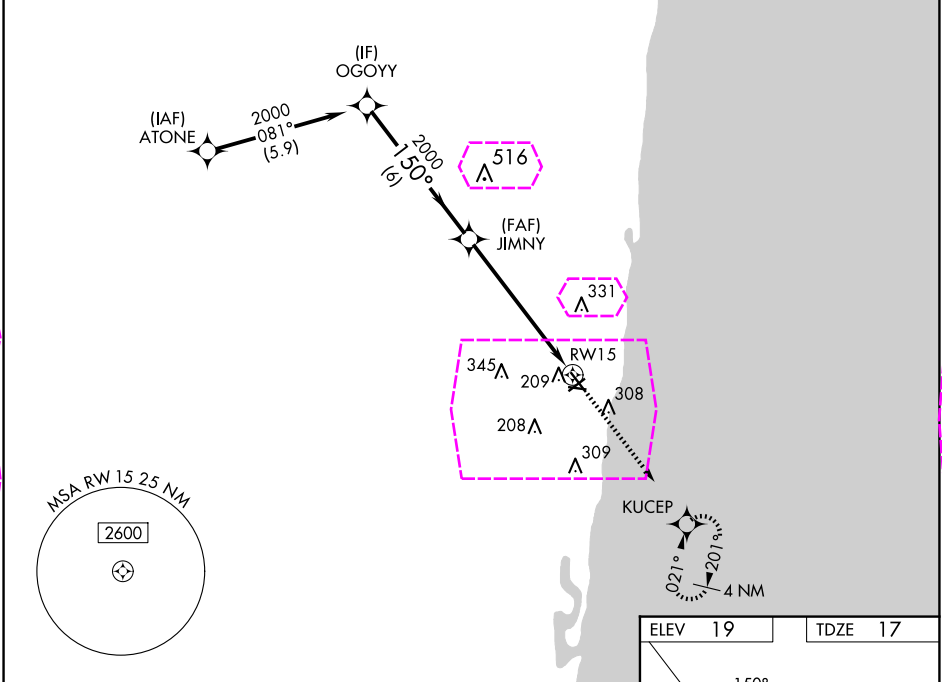
POMPANO BEACH AIRPARK (PMP)

RNP APCH - GPS.

⚠ Inop table does not apply. For uncompensated Baro-VNAV systems, LNAV/VNAV NA below 0°C or above 54°C. When local altimeter setting not received, use FXE altimeter setting. Rwy 15 helicopter visibility reduction below ¾ SM NA. Circling Rwy 6, 10, 24, 28 NA at night.

MALS MISSED APPROACH: Climb to 2100 direct KUCEP and hold, climb-in-hold to 5000.

ATIS <b>120.55</b>	MIAMI APP CON <b>119.7 306.3</b>	POMPANO BEACH TOWER ★ <b>125.4 (CTAF) 0</b>	GND CON <b>121.9</b>	UNICOM <b>122.95</b>
-----------------------	-------------------------------------	--	-------------------------	-------------------------



POMPANO BEACH, FLORIDA Amdt 1A 12JUN25	26°15'N-80°07'W	POMPANO BEACH AIRPARK (PMP) RNAV (GPS) RWY 15
---	-----------------	--

POMPANO BEACH, FLORIDA

AL-5972 (FAA)

25219

WAAS CH <b>82500</b> <b>W15A</b>	APP CRS <b>150°</b>	Rwy Ldg <b>4417</b> TDZE <b>17</b> Apt Elev <b>19</b>
--	------------------------	---

**RNAV (GPS) RWY 15**  
POMPANO BEACH AIRPARK (PMP)

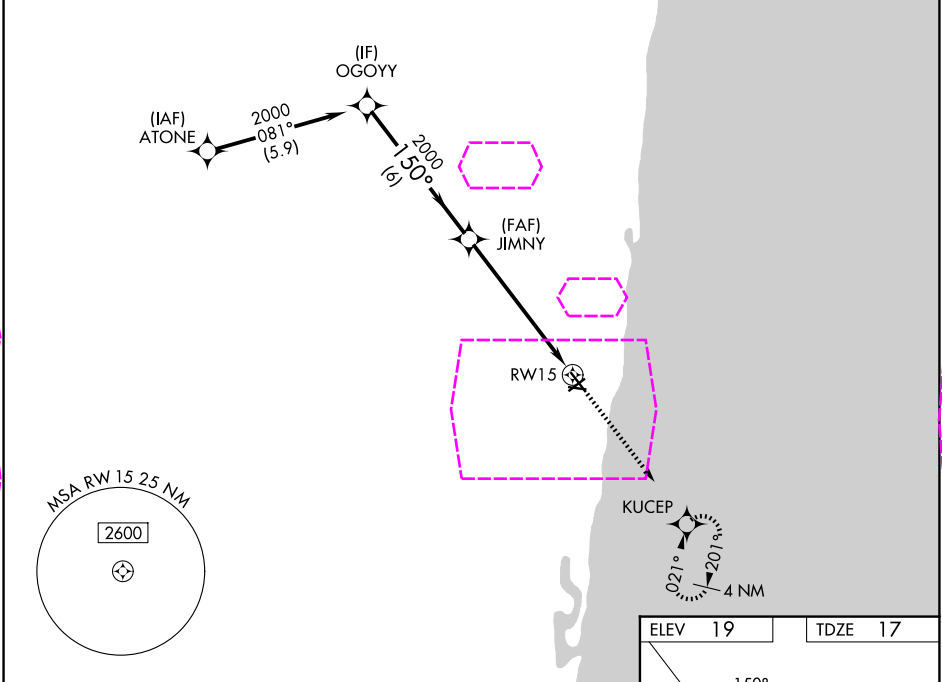
RNP APCH - GPS.

⚠ Inop table does not apply. For uncompensated Baro-VNAV systems, LNAV/VNAV NA below 0°C or above 54°C. When local altimeter setting not received, use FXE altimeter setting. Rwy 15 helicopter visibility reduction below 3/4 SM NA. Circling Rwy 6, 10, 24, 28 NA at night.

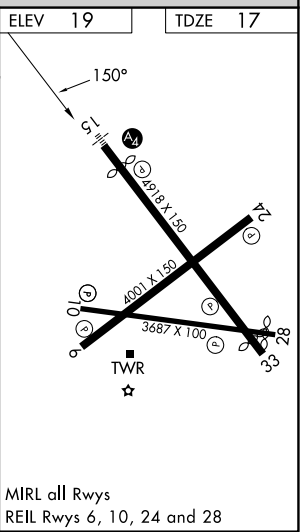
MALS  
⚡

MISSED APPROACH: Climb to 2100 direct KUCEP and hold, climb-in-hold to 5000.

ATIS <b>120.55</b>	MIAMI APP CON <b>119.7 306.3</b>	POMPANO BEACH TOWER ★ <b>125.4 (CTAF) 0</b>	GND CON <b>121.9</b>	UNICOM <b>122.95</b>
-----------------------	-------------------------------------	--	-------------------------	-------------------------



OGOOY		JIMNY		2100	KUCEP
2000		2000		↑	★
GP 3.00°		150°		1.3 NM to RW15	
TCH 39		2000		RW15	
6 NM		4.8 NM		1.3	
CATEGORY	A	B	C	D	
LPV DA	296-1	279 (300-1)	NA		
LNAV/VNAV DA	399-1	382 (400-1)	NA		
LNAV MDA	480-1	463 (500-1)	NA		
CIRCLING	660-1	641 (700-1)	NA		



POMPANO BEACH, FLORIDA

Amdt **1B 07AUG25**

26°15'N-80°07'W

POMPANO BEACH AIRPARK (PMP)

**RNAV (GPS) RWY 15**