

POMPANO BEACH, FLORIDA

AL-5972 (FAA)

25163

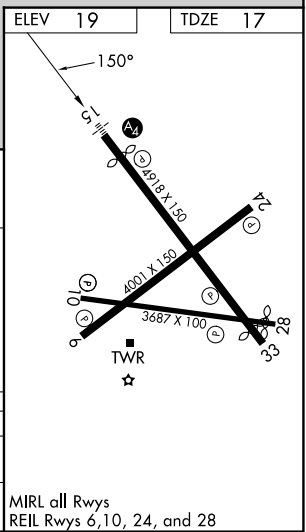
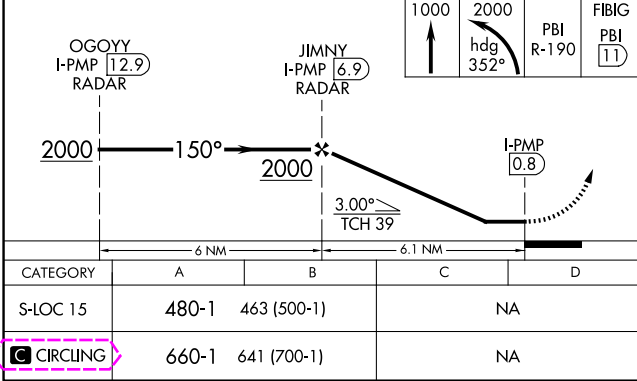
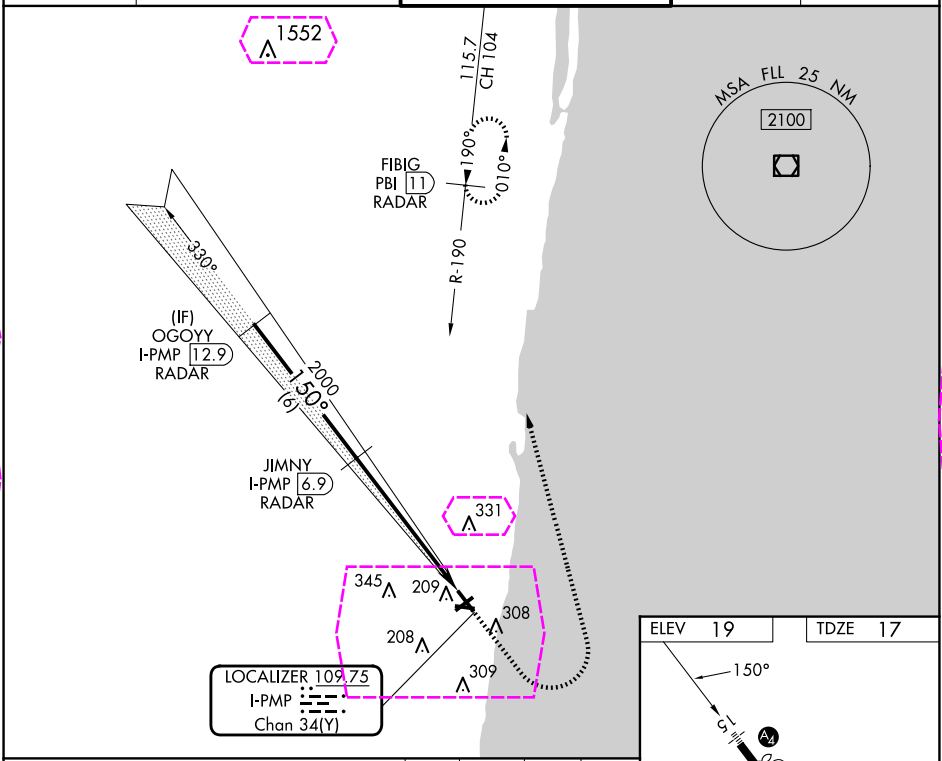
LOC/DME I-PMP 109.75 Chan 34(Y)	APP CRS 150°	Rwy Ldg TDZE 17 Apt Elev 19
---	------------------------	---

LOC RWY 15

POMPANO BEACH AIRPARK (PMP)

DME required. RADAR required for procedure entry.	MALS 	MISSED APPROACH: Climb to 1000 then climbing left turn to 2000 on heading 352° and PBI VORTAC R-190 to FIBIG/PBI 11 DME/RADAR and hold.
 Rwy 15 helicopter visibility reduction below 1 SM NA. Inop table does not apply. Procedure NA at night.		

ATIS 120.55	MIAMI APP CON 119.7 306.3	POMPANO BEACH TOWER ★ 125.4 (CTAF) 0	GND CON 121.9	UNICOM 122.95
-----------------------	-------------------------------------	--	-------------------------	-------------------------



POMPANO BEACH, FLORIDA
Amdt 5B 13JUN24

26°15'N-80°07'W

POMPANO BEACH AIRPARK (PMP)
LOC RWY 15

MIRL all Rwys
REIL Rws 6,10, 24, and 28

POMPANO BEACH, FLORIDA

AL-5972 (FAA)

25219

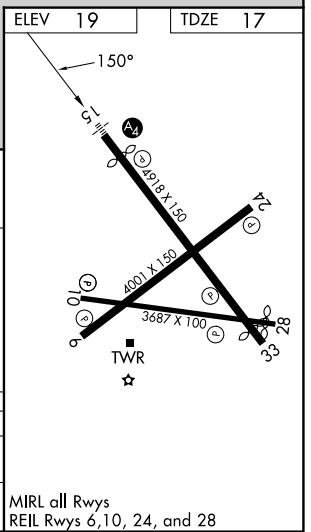
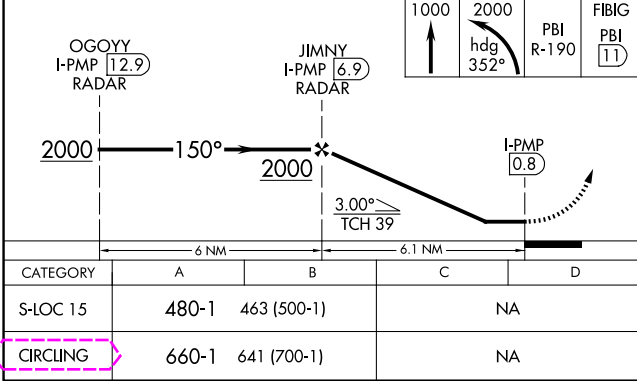
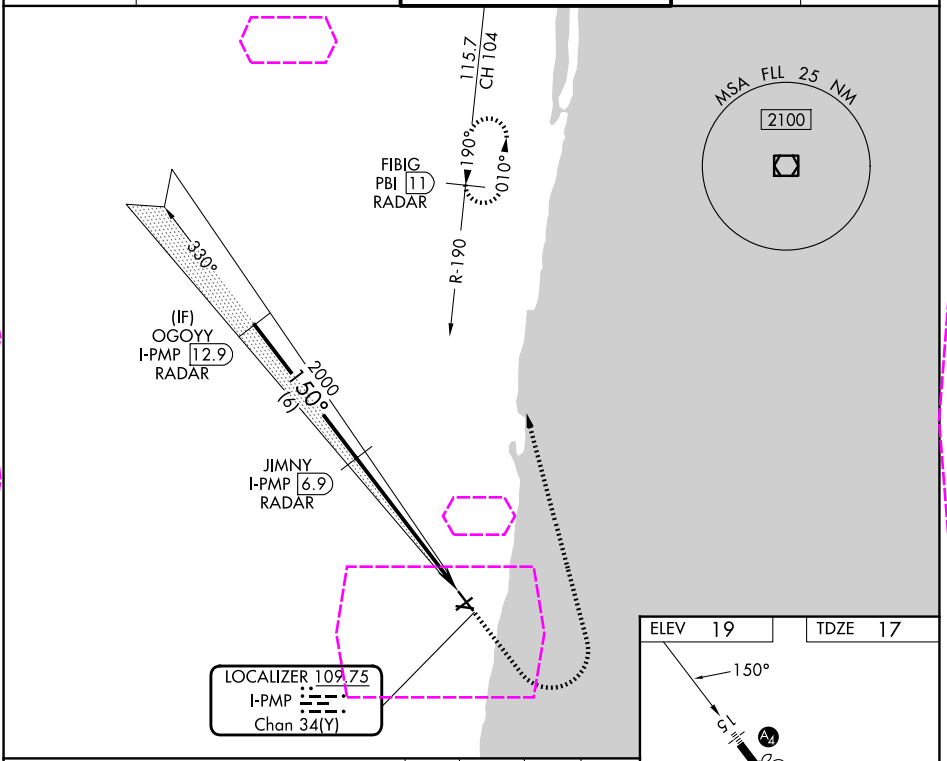
LOC/DME I-PMP 109.75 Chan 34(Y)	APP CRS 150°	Rwy Ldg TDZE 17 Apt Elev 19
---	------------------------	---

LOC RWY 15

POMPANO BEACH AIRPARK (PMP)

DME required. RADAR required for procedure entry.		MALS	MISSED APPROACH: Climb to 1000 then climbing left turn to 2000 on heading 352° and PBI VORTAC R-190 to FIBIG/PBI 11 DME/RADAR and hold.
	Rwy 15 helicopter visibility reduction below 1 SM NA. Inop table does not apply. Procedure NA at night.		

ATIS 120.55	MIAMI APP CON 119.7 306.3	POMPANO BEACH TOWER ★ 125.4 (CTAF) 0	GND CON 121.9	UNICOM 122.95
-----------------------	-------------------------------------	--	-------------------------	-------------------------



POMPANO BEACH, FLORIDA
Amdt 5B 13JUN24

26°15'N-80°07'W

POMPANO BEACH AIRPARK (PMP)
LOC RWY 15

SE-3, 07 AUG 2025 to 04 SEP 2025

SE-3, 07 AUG 2025 to 04 SEP 2025

MIRL all Rwys
REIL Rwys 6,10, 24, and 28