

WASHINGTON, INDIANA

AL-5969 (FAA)

24081

WAAS CH 86436 W18A	APP CRS 183°	Rwy Idg 5001 TDZE 467 Apt Elev 472
--	------------------------	---

RNAV (GPS) RWY 18

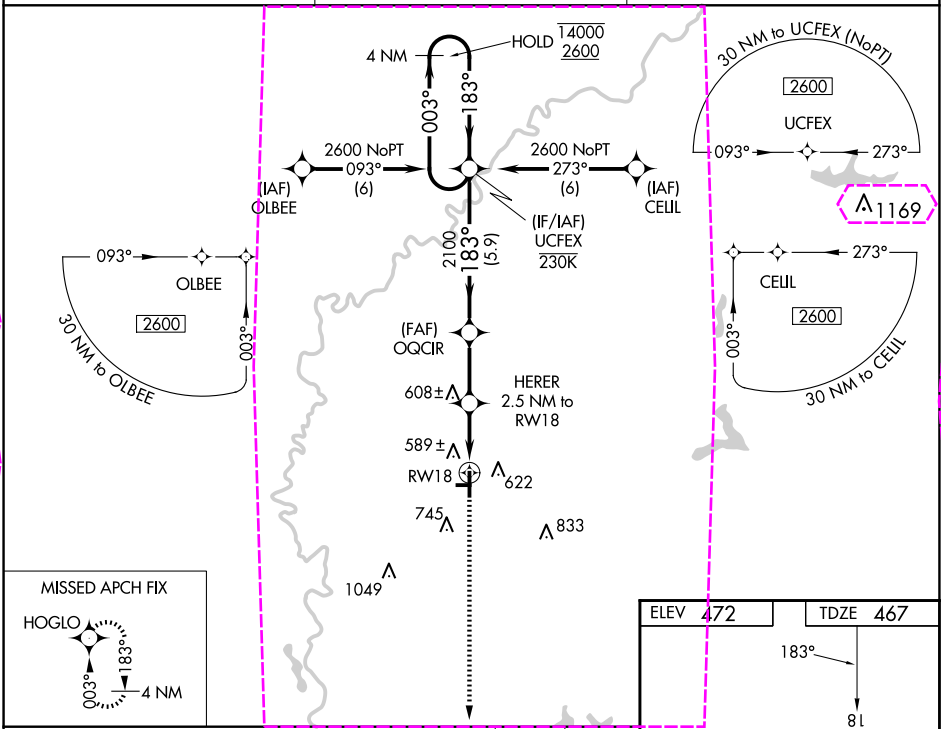
DAVISS COUNTY (DCY)

RNP APCH - GPS.

⚠ Circling NA to Rwy 9 and 27. Circling to Rwy 36 NA at night. For uncompensated Baro-VNAV systems, LNAV/VNAV NA below -15°C or above 54°C.

MISSED APPROACH:
Climb to 2200 direct
HOGLO and hold.

AWOS-3PT 119.075	EVANSVILLE APP CON ★ 125.6 343.7	UNICOM 122.8 (CTAF) 0
----------------------------	--	---------------------------------



4 NM Holding Pattern		UCFEX		OQCIR		HERER 2.5 NM to RW18		2200		HOGLO	
14000 ← 003°		2600 → 183°		183°		2100		1.1 NM to RW18		RW18	
GP 3.00°		TCH 43		5.9 NM		2.5 NM		1.4 NM		1.1	
CATEGORY	A	B	C	D							
LPV DA	778-1		311 (400-1)								
LNAV/VNAV DA	750-1		283 (300-1)								
LNAV MDA	840-1		373 (400-1)								
CIRCLING	1020-1 548 (600-1)	1060-1 588 (600-1)	1060-1½ 588 (600-1½)	1300-2¾ 828 (900-2¾)							

REIL Rwy 18 and 36 0
MIRL Rwy 18-36 0

