



VOR/DME PSC <b>113.75</b> Chn <b>84</b> (Y)	APP CRS <b>090°</b>	Rwy Ldg TDZE Apt Elev	<b>N/A</b> <b>N/A</b> <b>394</b>
---	------------------------	-----------------------------	--

VOR/DME-A  
RICHLAND (RLD)

<b>T</b>	When local altimeter setting not received, use Pasco
<b>A</b> NA	altimeter setting and increase all MDA 40 feet.

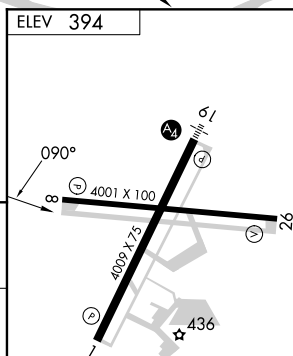
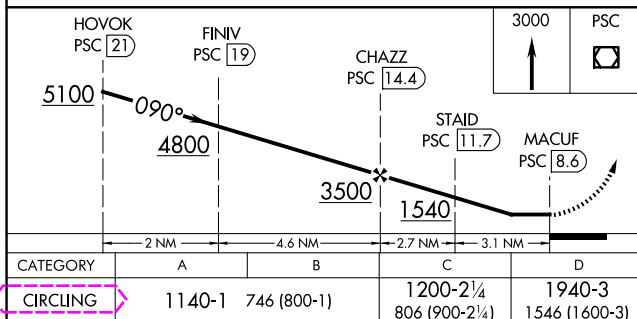
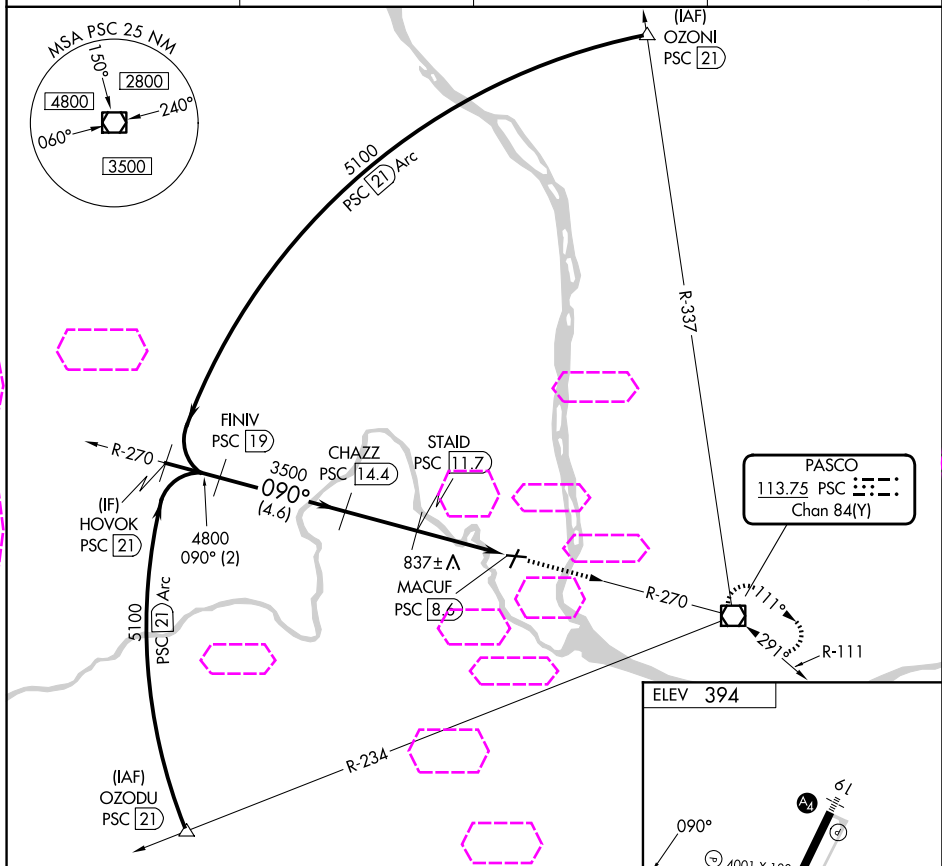
**MISSED APPROACH:** Climb to 3000  
direct PSC VOR/DME and hold.

AWOS-3PT

SPOKANE APP CON ★

CLNC DEL

UN|COM

122.7 (CTAF) **L**

RICHLAND, WASHINGTON  
Amdt 7 13NOV14

46°18'N-119°18'W

RICHLAND (RLD)  
VOR/DME-A

NW-1, 07 AUG 2025 to 04 SEP 2025

NW-1, 07 AUG 2025 to 04 SEP 2025