

RICHLAND, WASHINGTON

AL-5966 (FAA)

23334

APP CRS	Rwy Idg	4009
189°	TDZE	390
	Apt Elev	394

RNAV (GPS) Z RWY 19

RICHLAND (RLD)

NA For uncompensated Baro-VNAV systems, LNAV/VNAV NA below -15°C (4°F) or above 41°C (106°F). DME/DME RNP-0.3 NA. When local altimeter setting not received, use Pasco altimeter setting and increase all DA 21 feet and all MDA 40 feet. Increase LNAV Cats C and D visibility $\frac{1}{8}$ mile and Circling Cat C $\frac{1}{4}$ mile. For inop MALS increase LNAV/VNAV all Cats visibility to $\frac{7}{8}$ mile and increase LNAV Cat D visibility to $1\frac{1}{8}$ mile. Helicopter visibility reduction below $\frac{3}{4}$ SM NA. VDP and Baro/VNAV NA when using Pasco altimeter setting. For inoperative MALS when using Pasco altimeter setting increase LNAV/VNAV all Cats visibility to $\frac{7}{8}$ mile and LNAV Cats C and D visibility to $1\frac{1}{2}$.

Missed approach requires minimum climb of 340 feet per NM to 2000; if unable to meet climb gradient see RNAV (GPS) Y Rwy 19.

MALS

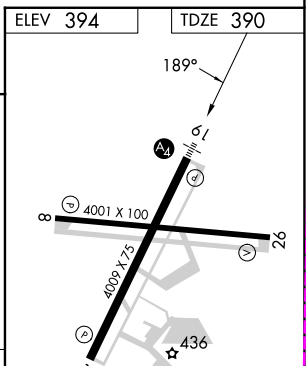
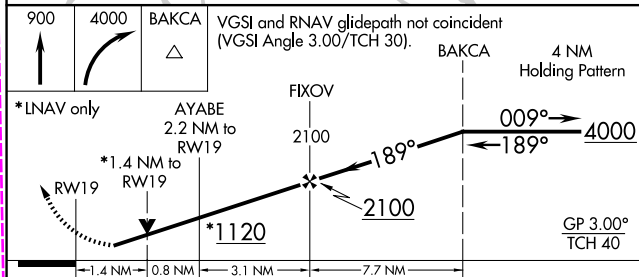
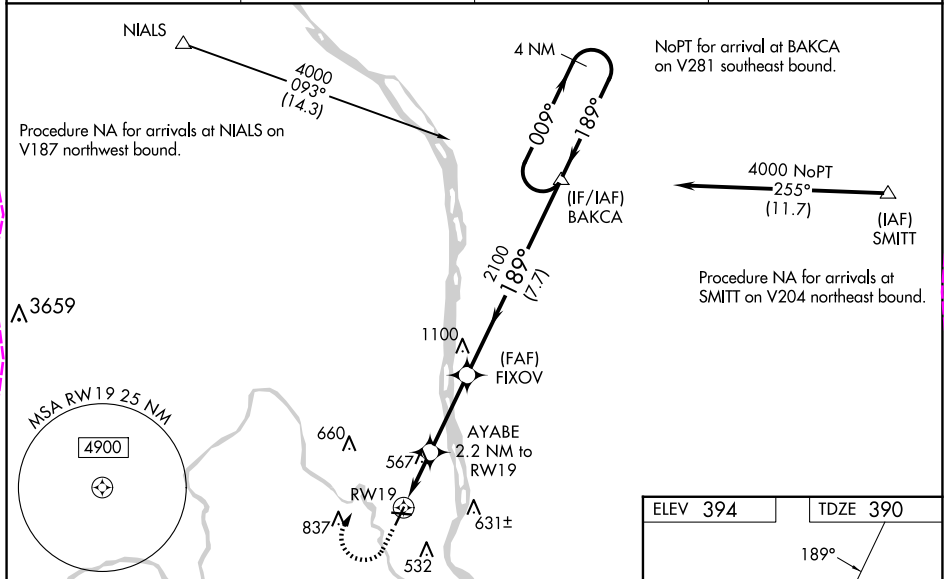
MISSED APPROACH: Climb to 900 then climbing right turn to 4000 direct BAKCA and hold, continue climb-in-hold to 4000.

AWOS-3PT
132.675

SPOKANE APP CON ★
128.75 377.2

CLNC DEL
122.4

UNICOM
122.7 (CTAF) 0



CATEGORY	A	B	C	D
LNAV/VNAV DA	#640- $\frac{3}{4}$	4250 (300- $\frac{3}{4}$)		
LNAV MDA	#880- $\frac{3}{4}$	490 (500- $\frac{3}{4}$)	#880- $\frac{1}{8}$	490 (500- $\frac{1}{8}$)
CIRCLING	920-1 526 (600-1)	1000-1 606 (700-1)	1200-2 $\frac{1}{4}$ 806 (900-2 $\frac{1}{4}$)	1940-3 1546 (1600-3)

REIL Rwy 1 and 19 0
MIRL Rwy 1-19 and 8-26 0

RICHLAND, WASHINGTON
Amdt 1 13NOV14

46°18'N-119°18'W

RNAV (GPS) Z RWY 19

RICHLAND (RLD)

NW-1, 10 JUL 2025 to 07 AUG 2025

RICHLAND, WASHINGTON

AL-5966 (FAA)

25219

APP CRS	Rwy Ldg	4009
189°	TDZE	390
	Apt Elev	394

RNAV (GPS) Z RWY 19

RICHLAND (RLD)

RNP APCH - GPS.

⚠ For uncompensated Baro-VNAV systems, LNAV/VNAV NA below -12°C or above 54°C. Baro-VNAV and VDP NA when using PSC altimeter setting. For inop ALS when using PSC altimeter setting, increase LNAV Cats C and D visibility to 1 3/8 SM. When local altimeter setting not received, use PSC altimeter setting and increase LNAV/VNAV DA to 671 feet; increase all MDAs 20 feet and LNAV visibility Cats C and D 1/8 SM, and Circling visibility Cat C 1/4 SM.

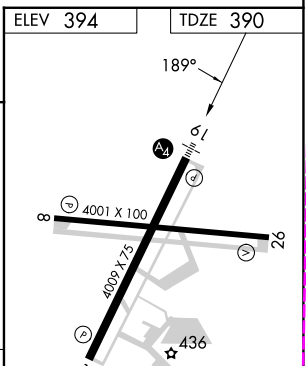
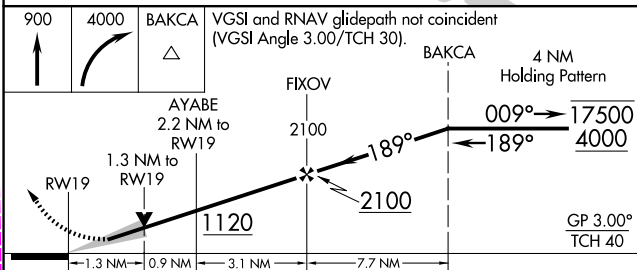
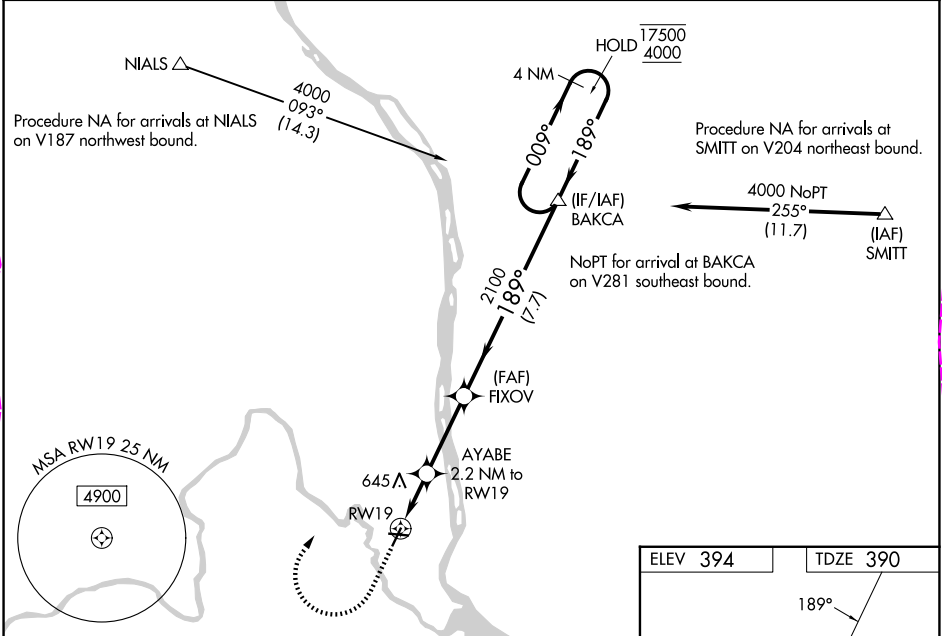
MALS

⦿

MISSED APPROACH: Climb to 900 then climbing right turn to 4000 direct BAKCA and hold.

*Missed approach requires minimum climb of 340 feet per NM to 2000; if unable to meet climb gradient, see RNAV (GPS) Y RWY 19.

AWOS-3PT 132.675	SPOKANE APP CON ★ 128.75 377.2	CLNC DEL 122.4	UNICOM 122.7 (CTAF) ①
---------------------	-----------------------------------	-------------------	--------------------------



CATEGORY	A	B	C	D
LNAV/VNAV DA*	651-761 (300-761)			
LNAV MDA*	840-761 (500-761)	840-761 (500-761)		
CIRCLING	840-761 (500-761)	1000-761 (700-761)	1200-761 (900-761)	1960-3 (1600-3)

REIL Rwy 1 and 19 ①
MIRL Rwy 1-19 and 8-26 ①

RICHLAND, WASHINGTON

Am# 2 07AUG25

46°18'N-119°18'W

RICHLAND (RLD)

RNAV (GPS) Z RWY 19

NW-1, 07 AUG 2025 to 04 SEP 2025

NW-1, 07 AUG 2025 to 04 SEP 2025