

RICHLAND, WASHINGTON

AL-5966 (FAA)

23334

APP CRS	Rwy Idg	4009
189°	TDZE	390
	Apt Elev	394

RNAV (GPS) Y RWY 19

RICHLAND (RLD)

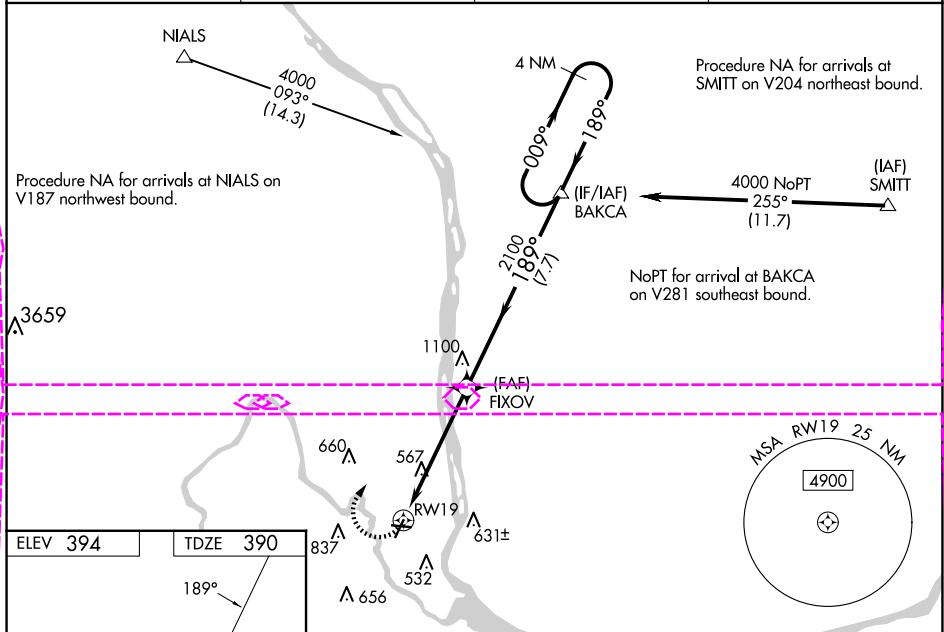
NA

For uncompensated Baro-VNAV systems, LNAV/VNAV NA below -15°C (4°F) or above 41°C (106°F). DME/DME RNP-0.3 NA. When local altimeter setting not received, use Pasco altimeter setting and increase all DA 21 feet and all MDA 40 feet and increase LNAV Cat A visibility ¼ mile, Cat C and D ½ mile, and Circling Cat C visibility ¼ mile. For inop MALS increase LNAV/VNAV Cat D visibility to 1½ mile, LNAV Cat C and D visibility to 2½ mile. When using Pasco altimeter setting increase LNAV/VNAV all Cats visibility to 1¾ mile, LNAV Cat C and D visibility to 2½ mile. VDP and Baro-VNAV NA when using Pasco altimeter setting. Helicopter visibility reduction below ¾ SM NA.

MALS

MISSED APPROACH: Climbing right turn 4000 direct BAKCA and hold, continue climb-in-hold to 4000.

AWOS-3PT 132.675	SPOKANE APP CON ★ 128.75 377.2	CLNC DEL 122.4	UNICOM 122.7 (CTAF) 0
----------------------------	--	--------------------------	---------------------------------



4000 BAKCA

VGSI and RNAV glidepath not coincident (VGSI Angle 3.00/TCH 30).

4 NM Holding Pattern

*LNAV only

FIXOV

RW19

*2.6 NM to RW19

2100 189° 2100

GP 3.00° TCH 40

2.6 NM 2.7 NM 7.7 NM

CATEGORY	A	B	C	D
LNAV/VNAV DA	861-1 ³ / ₈ 471 (500-1 ³ / ₈)			
LNAV MDA	1240- ³ / ₄ 850 (900- ³ / ₄)	1240-1 850 (900-1)	1240-2 850 (900-2)	850 (900-2)
C CIRCLING	1240-1 ¹ / ₄ 846 (900-1 ¹ / ₄)	846 (900-1 ¹ / ₄)	1240-2 ¹ / ₂ 846 (900-2 ¹ / ₂)	1940-3 1546 (1600-3)

REIL Rwy 1 and 19
MIRL Rwy 1-19 and 8-26

RICHLAND, WASHINGTON
Am# 2 13NOV14

46°18'N-119°18'W

RNAV (GPS) Y RWY 19

RICHLAND (RLD)

NW-1, 10 JUL 2025 to 07 AUG 2025

NW-1, 10 JUL 2025 to 07 AUG 2025

RICHLAND, WASHINGTON

AL-5966 (FAA)

25219

APP CRS	Rwy Ldg	4009
189°	TDZE	390
	Apt Elev	394

RNAV (GPS) Y RWY 19

RICHLAND (RLD)

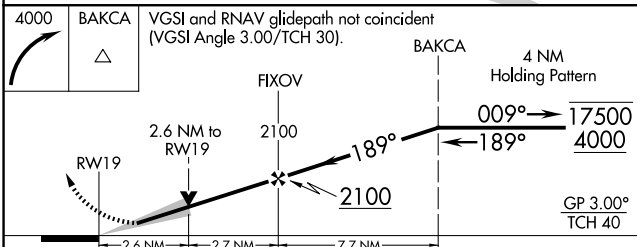
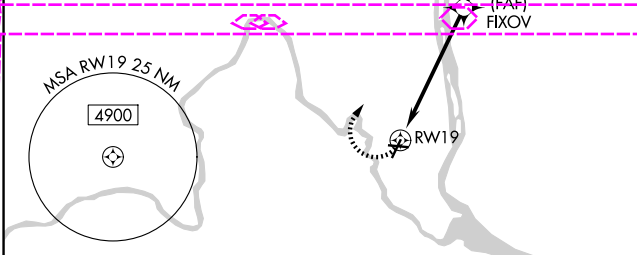
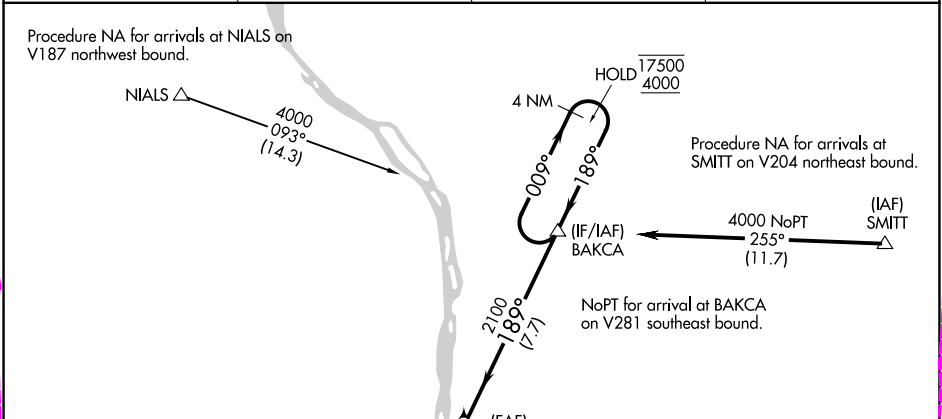
RNP APCH - GPS.

⚠ For uncompensated Baro-VNAV systems, LNAV/VNAV NA below -12°C or above 54°C. Baro-VNAV and VDP NA when using PSC altimeter setting. When local altimeter setting not received, use PSC altimeter setting and increase LNAV/VNAV DA to 814 feet; increase all MDAs 20 feet and LNAV visibility Cat C/D ½ SM. For inop ALS increase LNAV/VNAV visibility all Cats to 1½ and LNAV Cat C and D visibility to 2½ SM.

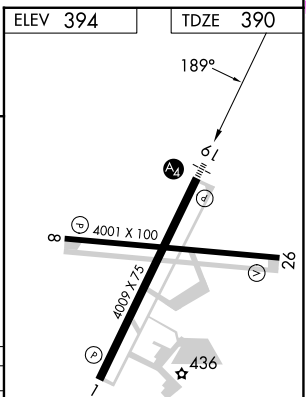
MALS

MISSED APPROACH: Climbing right turn 4000 direct BAKCA and hold, continue climb-in-hold to 4000.

AWOS-3PT 132.675	SPOKANE APP CON ★ 128.75 377.2	CLNC DEL 122.4	UNICOM 122.7 (CTAF) 1
---------------------	-----------------------------------	-------------------	--------------------------



CATEGORY	A	B	C	D
LNAV/VNAV DA	794-1	404 (400-1)		
LNAV MDA	1240-7/8 850 (900-7/8)	1240-1 850 (900-1)	1240-2	850 (900-2)
CIRCLING	1240-1¼ 846 (900-1¼)		1240-2½ 846 (900-2½)	1960-3 1566 (1600-3)



REIL Rwy 1 and 19 1
MIRL Rwy 1-19 and 8-26 1

RICHLAND, WASHINGTON

Am# 3 07AUG25

46°18'N-119°18'W

RICHLAND (RLD)

RNAV (GPS) Y RWY 19

NW-1, 07 AUG 2025 to 04 SEP 2025

NW-1, 07 AUG 2025 to 04 SEP 2025