

RICHLAND, WASHINGTON

AL-5966 (FAA)

23334

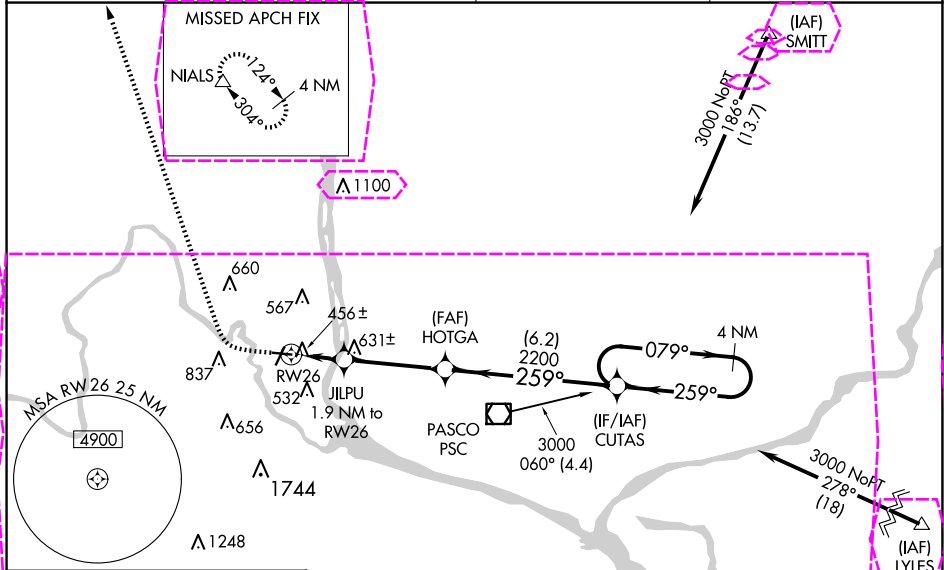
WAAS	APP CRS	Rwy Idg	4001
CH 77903	259°	TDZE	389
W26A		App Elev	394

# RNAV (GPS) RWY 26

RICHLAND (RLD)

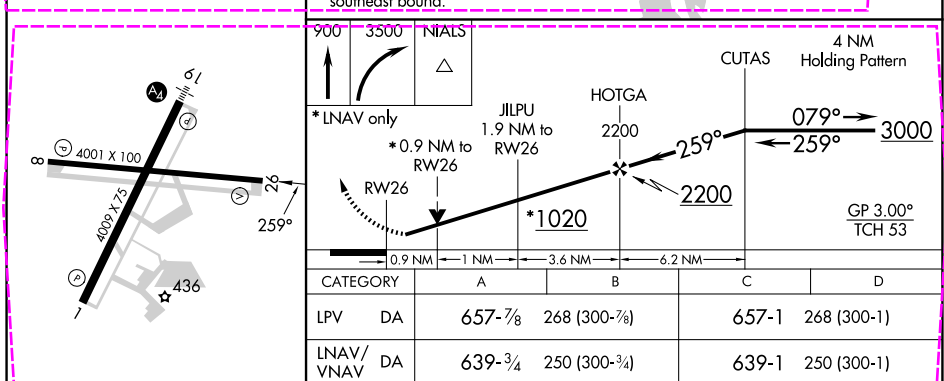
RNP APCH. ⚠ NA When local altimeter setting not received, use Pasco altimeter setting and increase all DA 21 feet and all MDA 40 feet and increase LNAV/VNAV Cats A and B visibility ½ mile, Circling Cat C visibility ¼ mile. Baro-VNAV NA when using Pasco altimeter setting. For uncompensated Baro-VNAV systems, LNAV/VNAV NA below -15°C (4°F) or above 41°C (107°F). Rwy 26 helicopter visibility reduction below ¾ SM NA.		MISSED APPROACH: Climb to 900 then climbing right turn to 3500 direct NIALS and hold.
--	--	---

AWOS-3PT 132.675	SPOKANE APP CON ★ 128.75 377.2	CLNC DEL 122.4	UNICOM 122.7 (CTAF) 0
---------------------	-----------------------------------	-------------------	--------------------------



ELEV 394	TDZE 389
----------	----------

Procedure NA for arrivals at PSC VOR/DME on V187 southwest bound and on V281 southeast bound.



Category	A	B	C	D
LPV DA	657-7/8	268 (300-7/8)	657-1	268 (300-1)
LNAV/VNAV DA	639-3/4	250 (300-3/4)	639-1	250 (300-1)
LNAV MDA	720-1	331 (400-1)		
CIRCLING	920-1 526 (600-1)	1000-1 606 (700-1)	1200-2 1/4 806 (900-2 1/4)	1940-3 1546 (1600-3)

RICHLAND, WASHINGTON  
Amf 2B 06DEC18

46°18'N-119°18'W

# RNAV (GPS) RWY 26

RICHLAND, WASHINGTON

AL-5966 (FAA)

25219

WAAS CH <b>77903</b> <b>W26A</b>	APP CRS <b>259°</b>	Rwy Ldg TDZE Apt Elev	<b>4001</b> <b>390</b> <b>394</b>
--	------------------------	-----------------------------	---

## RNAV (GPS) RWY 26

RICHLAND (RLD)

RNP APCH - GPS.

**⚠** For uncompensated Baro-VNAV systems, LNAV/VNAV NA below -12°C or above 54°C. Rwy 26 helicopter visibility reduction below  $\frac{3}{4}$  SM NA. Baro-VNAV and VDP NA when using PSC altimeter setting. When local altimeter setting not received, use PSC altimeter setting and increase LPV DA to 666 feet; increase LNAV/VNAV DA to 671 feet; increase all MDAs 20 feet and Circling visibility  $\text{Cat C } \frac{1}{4}$  SM.

MISSED APPROACH: Climb to 900 then climbing right turn to 3500 direct NIALS and hold.

AWOS-3PT

**132.675**

SPOKANE APP CON \*

**128.75 377.2**

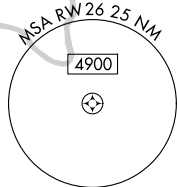
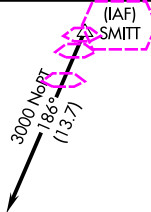
CLNC DEL

**122.4**

UNICOM

**122.7 (CTAF) 0**

MISSED APCH FIX



RW26

A 490

JILPU

1.8 NM to RW26

(FAF) HOTGA

PASCO

PSC

(6.2) 2200

259°

079°

4 NM

HOLD

6000

3000

259°

(IF/IAF) CUTAS

3000

060° (4.4)

3000 NoPT

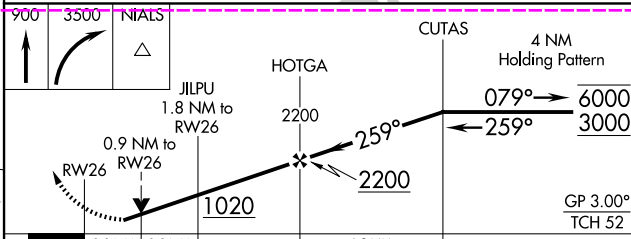
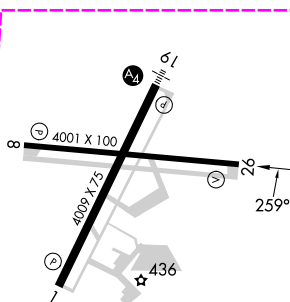
278° (18)

(IAF) LYLES

ELEV 394

TDZE 390

Procedure NA for arrival on PSC VOR/DME airway radials 306 CW 153.



CATEGORY	A	B	C	D
LPV DA	646- $\frac{7}{8}$	256 (300- $\frac{7}{8}$ )		
LNAV/VNAV DA	651- $\frac{7}{8}$	261 (300- $\frac{7}{8}$ )		
LNAV MDA	740-1	350 (400-1)		
CIRCLING	820-1 426 (500-1)	1000-1 606 (700-1)	1200-2 $\frac{1}{4}$ 806 (900-2 $\frac{1}{4}$ )	1960-3 1566 (1600-3)

REIL Rwy 1 and 19 0

MIRL Rwy 1-19 and 8-26 0

RICHLAND, WASHINGTON

Am# 3 07AUG25

46°18'N-119°18'W

RICHLAND (RLD)

## RNAV (GPS) RWY 26

NW-1, 07 AUG 2025 to 04 SEP 2025