

LOC/DME I-RLD 110.5 Chan 42	APP CRS 189°	Rwy Idg 4009 TDZE 390 Apt Elev 394
---	------------------------	--

LOC RWY 19
RICHLAND (RLD)

T Rwy 19 helicopter visibility reduction below $\frac{3}{4}$
NA SM NA. Inop table does not apply to S-19
 Cat C. For inop ALS increase HOTUX fix
 minimums S-19 Cat D visibility $\frac{1}{4}$ SM.

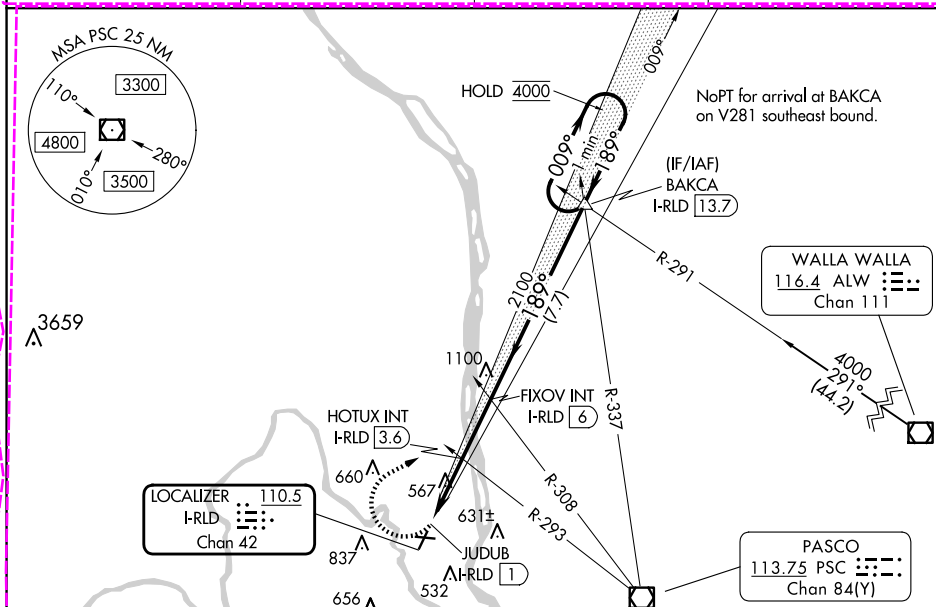
MALS



MISSED APPROACH: Climbing right turn to 4000 on heading 045° and on PSC VOR/ DME R-337 to BAKCA INT/I-RLD 13.7 DME and hold, continue climb-in-hold to 4000.

AWOS-3PT
132.675

SPOKANE APP CON ★
128.75 377.2

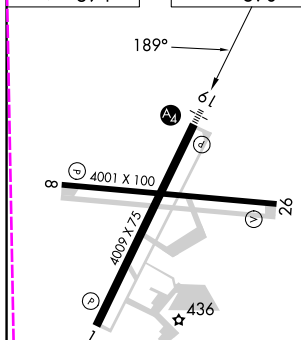
CLNC DEL
122.4UNICOM
122.7 (CTAF) **L**



ELEV	394		TDZE	390
------	-----	--	------	-----

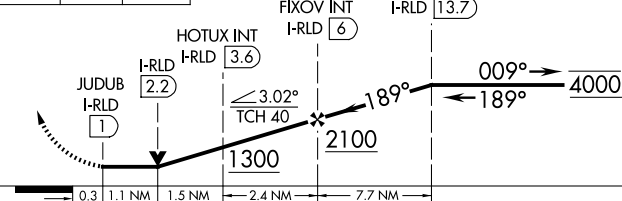
4000	BAKCA
------	-------

VGSI and descent angles not coincident
(VGSI Angle 3.00/TCH 30).

One Minute Holding Pattern



 hdg 045°	PSC R-337	
--	--------------	---



CATEGORY	A	B	C	D
S-19	1300-1	910 (1000-1)	1300-2½	910 (1000-2½)
C CIRCLING	1300-1¼	906 (1000-1¼)	1300-2¾ 906 (1000-2¾)	1940-3 1546 (1600-3)
HOTUX FIX MINIMUMS (DUAL VOR RECEIVERS OR DME REQUIRED)				
S-19	880-¾	490 (500-¾)	880-1⅞	490 (500-1⅞)
C CIRCLING	920-1 526 (600-1)	1000-1 606 (700-1)	1200-2¼ 806 (900-2¼)	1940-3 1546 (1600-3)

RICHLAND, WASHINGTON

Amdt 9A 08SEP22

46°18'N-119°18'W

RICHLAND (RLD)
LOC RWY 19

NW-1, 10 JUL 2025 to 07 AUG 2025

NW-1, 10 JUL 2025 to 07 AUG 2025

RICHLAND, WASHINGTON

AL-5966 (FAA)

25219

LOC/DME I-RLD	APP CRS	Rwy Ldg	4009
110.5	189°	TDZE	390
Chan 42		Apt Elev	394

LOC RWY 19

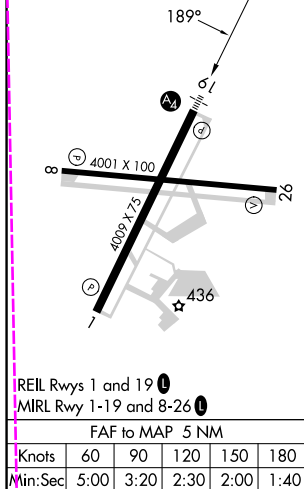
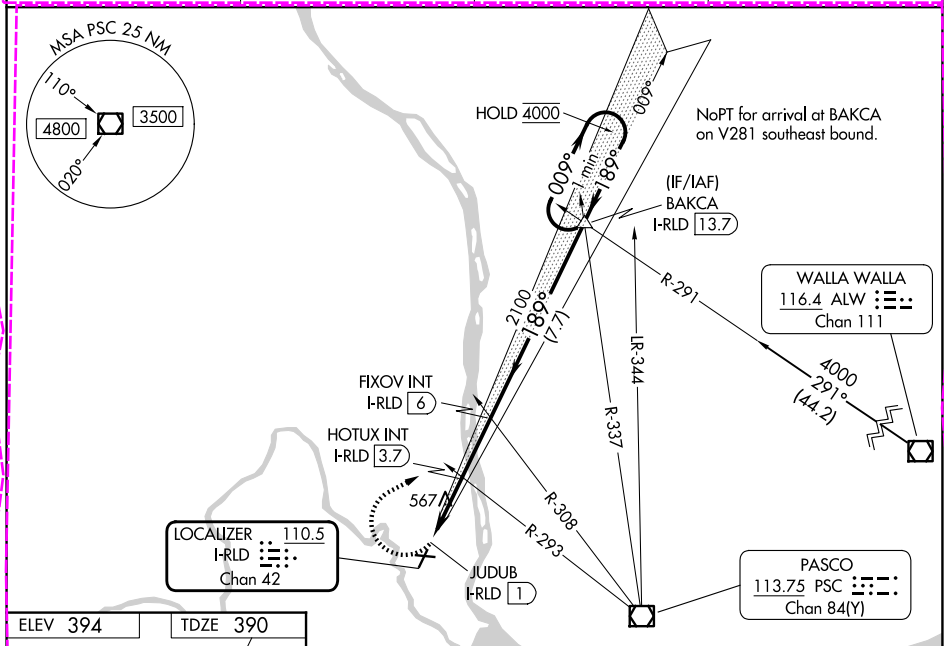
RICHLAND (RLD)



VDP NA when using PSC altimeter setting. For inop ALS, increase S-19 Cats C and D visibility to 3 SM. When local altimeter setting not received, use PSC altimeter setting and increase all MDAs 20 feet and increase HOTUX fix minimums S-LOC 19 visibility Cat C/D ½ SM, and Circling visibility Cat C ¼ SM. HOTUX fix minimum: For inop ALS, increase S-19 Cats C and D visibility to 1 ½ SM.

MALS

MISSED APPROACH: Climbing right turn to 4000 on heading 045° and on PSC VOR/DME R-337 to BAKCA INT/I-RLD 13.7 DME and hold, continue climb-in-hold to 4000.

AWOS-3PT	SPOKANE APP CON ★	CLNC DEL	UNICOM
132.675	128.75 377.2	122.4	122.7 (CTAF) 0



4000  hdg 045°		PSC R-337	BAKCA △	VGSI and descent angles not coincident (VGSI Angle 3.00/TCH 30).		BAKCA I-RLD 13.7	One Minute Holding Pattern	
		JUDUB I-RLD 1	I-RLD 2.2	HOTUX INT I-RLD 3.7	FIXOV INT I-RLD 6	009° → 4000 ← 189°		
				3.00° TCH 40		189°		
				1360		2100		
		0.3	1.2 NM	1.5 NM	2.3 NM	7.7 NM		
CATEGORY	A			B		C		D
S-19	1360-1 970 (1000-1)			1360-1¼ 970 (1000-1¼)		1360-2½ 970 (1000-2½)		
CIRCLING	1360-1¼ 966 (1000-1¼)			1360-1½ 966 (1000-1½)		1360-3 966 (1000-3)		1960-3 1566 (1600-3)
HOTUX FIX MINIMUMS (DUAL VOR RECEIVERS OR DME REQUIRED)								
S-19	880-7⁄8 490 (500-7⁄8)				880-1½ 490 (500-1½)			
CIRCLING	880-1 486 (500-1)		1000-1 606 (700-1)		1200-2¼ 806 (900-2¼)		1960-3 1566 (1600-3)	

RICHLAND, WASHINGTON
Amdt 10 07AUG25

46°18'N-119°18'W

LOC RWY 19

NW-1, 07 AUG 2025 to 04 SEP 2025