

HORNELL, NEW YORK

AL-5964 (FAA)

22279

WAAS CH 97625 W36A	APP CRS 355°	Rwy Idg 5000 TDZE 1195 Apt Elev 1219
--	------------------------	---

RNAV (GPS) RWY 36

HORNELL MUNI (HTF)

RNP APCH - GPS

▼

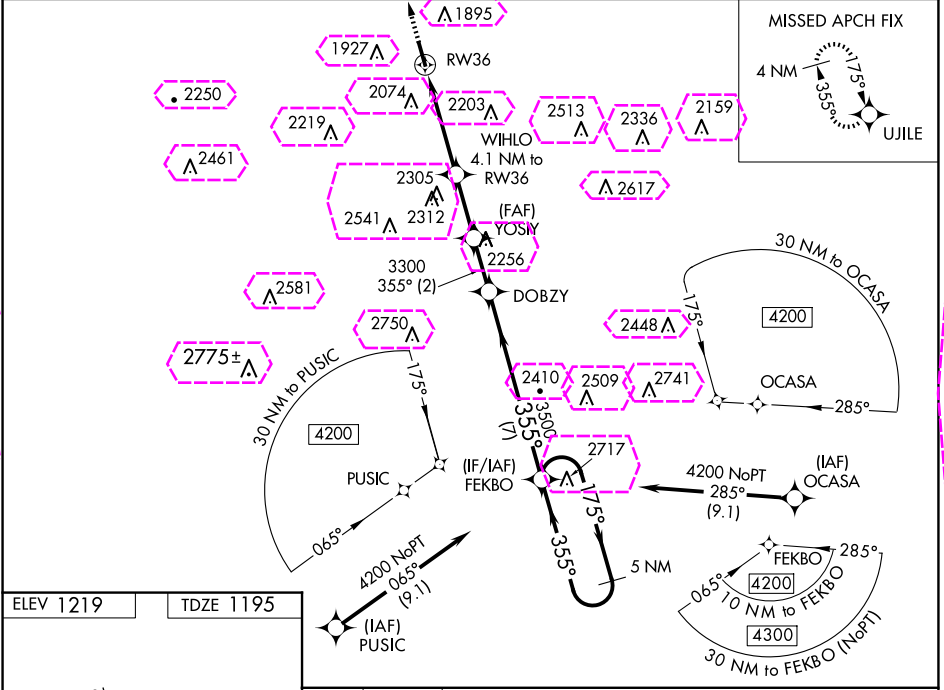
▲ NA

❄ -19°C

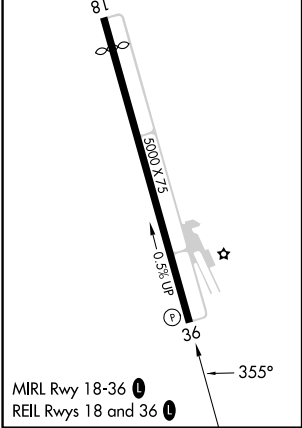
For uncompensated Baro-VNAV systems, LNAV/VNAV NA below -17°C or above 54°C. Helicopter visibility reduction below ¾ SM NA. When local altimeter setting not received, use Dansville altimeter setting and increase all DA 105 feet, all MDA 120 feet and LPV all Cats visibility ¾ mile, LNAV/VNAV all Cats visibility 1 mile, and LNAV Cat B visibility ½ mile and Cat C visibility ½ mile. VDP and Baro-VNAV NA with Dansville altimeter setting. Circling Rwy 18 NA at night.

MISSED APPROACH:
Climb to 3900 direct
UJILE and hold.

AWOS-3 118.475	CLEVELAND CENTER 124.325 353.85	UNICOM 122.7 (CTAF) 0
--------------------------	---	---------------------------------



ELEV 1219	TDZE 1195
-----------	-----------



3900	UJILE	WIHLO 4.1 NM to RW36	YOSIY 3300	DOBZY	FEKBO	5 NM Holding Pattern
*LNAV only.	*2.8 NM to RW36	*2.8 NM to RW36	*2540	3300	3500	GP 3.00 TCH 50
2.8 NM	1.3	2.4 NM	2 NM	7 NM		
CATEGORY	A	B	C	D		
LPV DA	1660-1½	465 (500-1½)				NA
LNAV/VNAV DA	2343-4	1148 (1200-4)				NA
LNAV MDA	2120-1¼	925 (900-1¼)	2120-2½ 925 (900-2½)			NA
CIRCLING	2360-1¼ 1141 (1200-1¼)	2380-1½ 1161 (1200-1½)	2440-3 1221 (1300-3)			NA

HORNELL, NEW YORK
Orig-B 06OCT22

42°23'N - 77°41'W

RNAV (GPS) RWY 36

HORNELL, NEW YORK

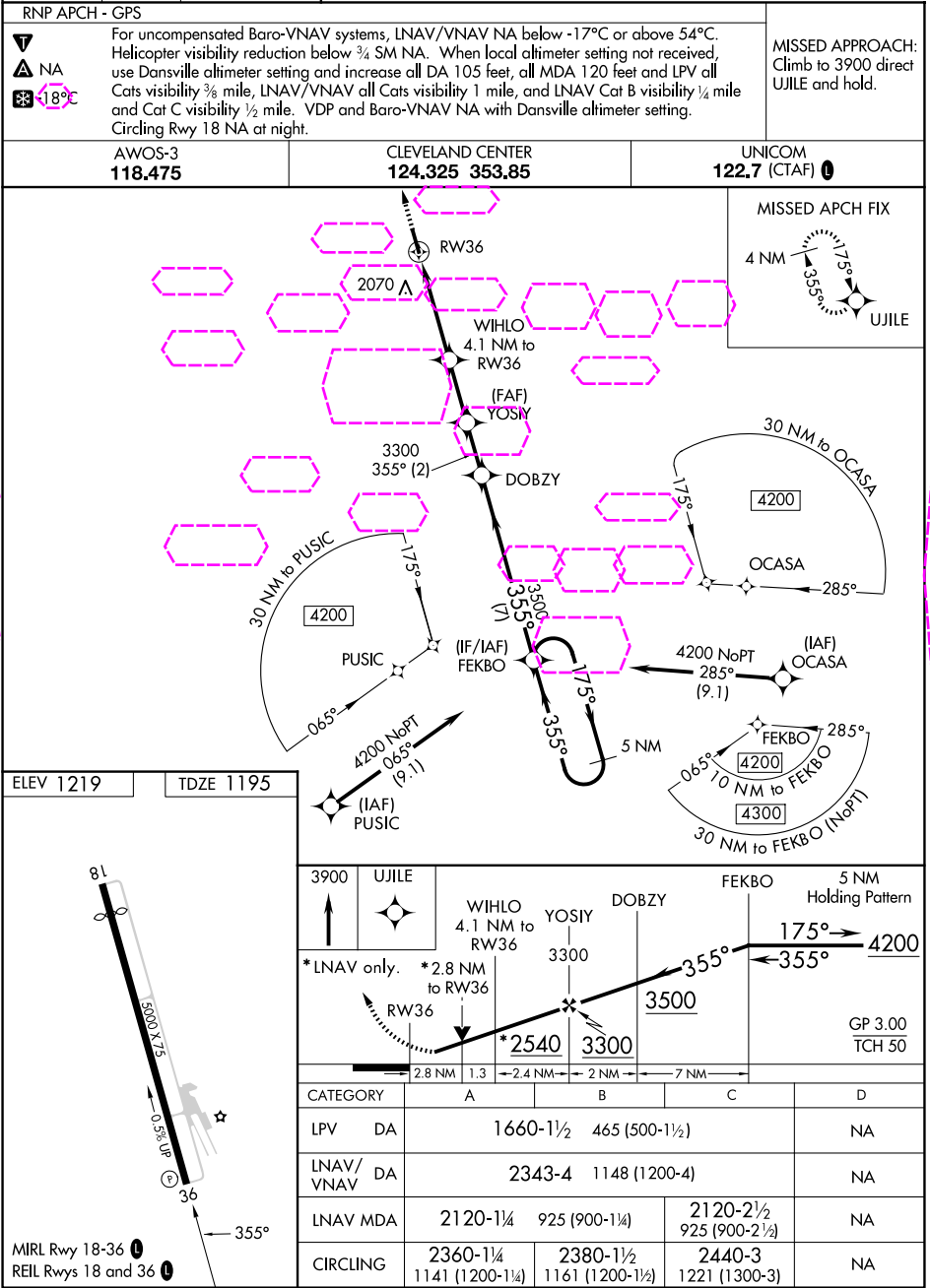
AL-5964 (FAA)

25219

WAAS CH 97625 W36A	APP CRS 355°	Rwy Ldg 5000 TDZE 1195 Apt Elev 1219
--	------------------------	---

RNAV (GPS) RWY 36

HORNELL MUNI (HTF)



HORNELL, NEW YORK
Orig-B 06OCT22

42°23'N - 77°41'W

HORNELL MUNI (HTF)

RNAV (GPS) RWY 36

NE-2, 07 AUG 2025 to 04 SEP 2025

NE-2, 07 AUG 2025 to 04 SEP 2025