

FRENCH LICK, INDIANA

AL-5962 (FAA)

22139

WAAS CH 61320 W08A	APP CRS 080°	Rwy Idg 5309 TDZE 792 Apt Elev 792
--	------------------------	---

RNAV (GPS) RWY 8

FRENCH LICK MUNI (F'R.H)

RNP APCH.

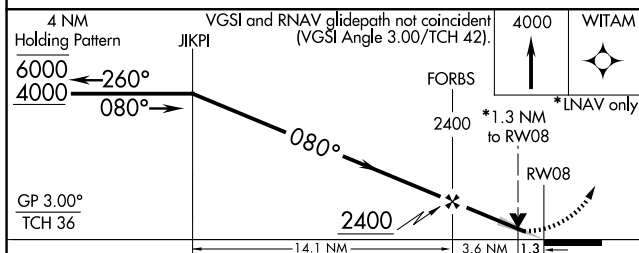
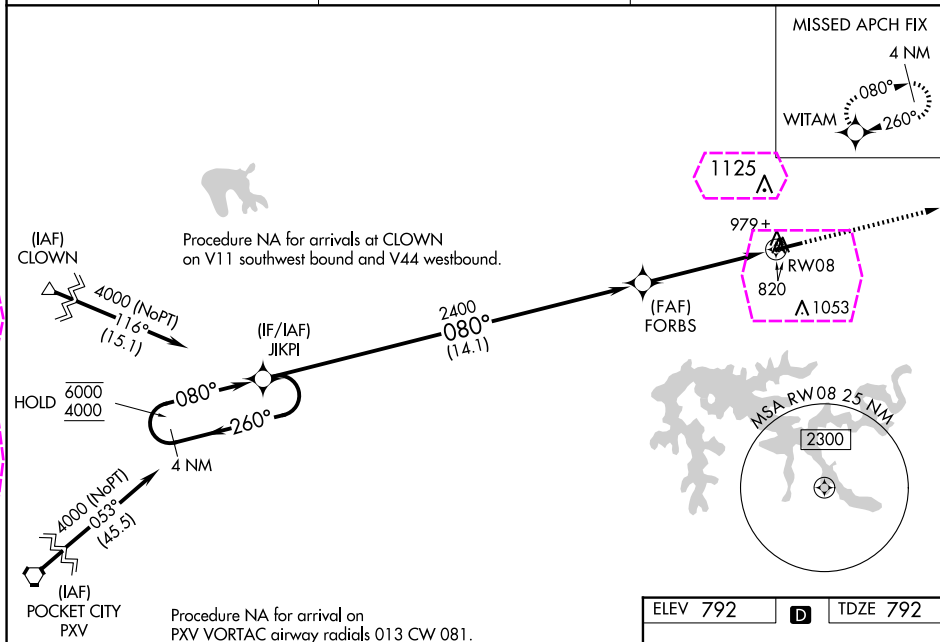
For uncompensated Baro-VNAV systems, LNAV/VNAV NA below -16°C or above 39°C.

MISSED APPROACH: Climb to 4000 direct WITAM and hold.

AWOS-3
118.075

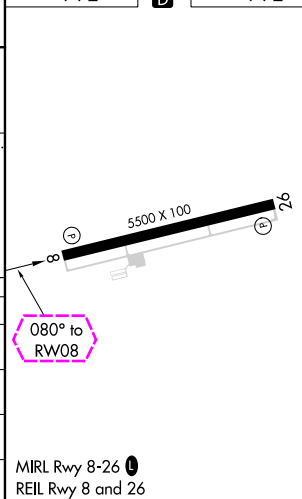
LOUISVILLE APP CON
132.075 327.0

UNICOM
122.8 (CTAF)



CATEGORY	A	B	C	D
LPV DA	1057-7 $\frac{7}{8}$ 265 (300-7 $\frac{7}{8}$)			
LNAV/VNAV DA	1162-1 $\frac{1}{4}$ 370 (400-1 $\frac{1}{4}$)			
LNAV MDA	1240-1 448 (500-1)	1240-1 $\frac{3}{8}$ 448 (500-1 $\frac{3}{8}$)		
CIRCLING	1280-1 488 (500-1)	1480-2 688 (700-2) 1480-2 $\frac{1}{4}$ 688 (700-2 $\frac{1}{4}$)		

ELEV 792 D TDZE 792



FRENCH LICK, INDIANA
Amdt 1D 19MAY22

38°30'N-86°38'W

FRENCH LICK MUNI (F'R.H)
RNAV (GPS) RWY 8

EC-2, 10 JUL 2025 to 07 AUG 2025

EC-2, 10 JUL 2025 to 07 AUG 2025

FRENCH LICK, INDIANA

AL-5962 (FAA)

25219

WAAS CH 61320 W08A	APP CRS 080°	Rwy Ldg 5309 TDZE 792 Apt Elev 792
--	------------------------	---

RNAV (GPS) RWY 8

FRENCH LICK MUNI (F'R'H)

RNP APCH.

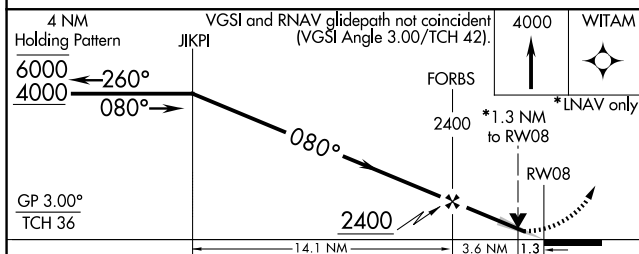
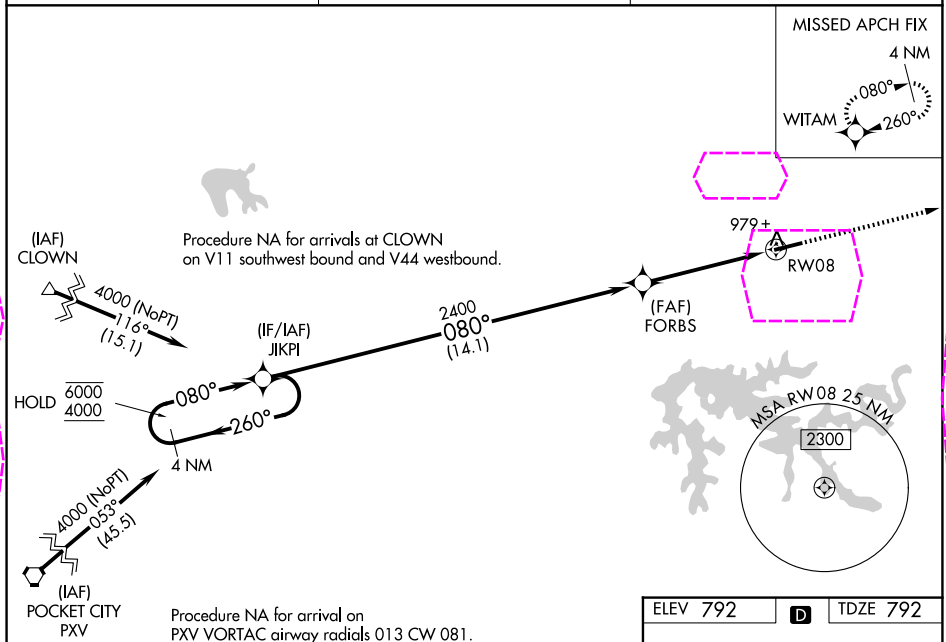
For uncompensated Baro-VNAV systems, LNAV/VNAV NA below -16°C or above 39°C.

MISSED APPROACH: Climb to 4000 direct WITAM and hold.

AWOS-3
118.075

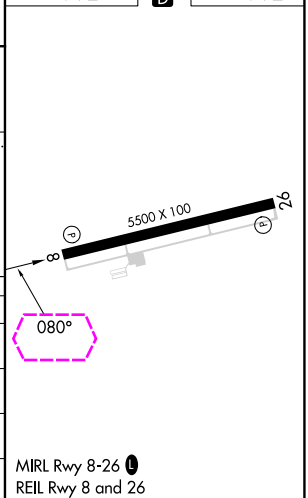
LOUISVILLE APP CON
123.675 327.0

UNICOM
122.8 (CTAF)



CATEGORY	A	B	C	D
LPV DA	1057-7/8 265 (300-7/8)			
LNAV/VNAV DA	1162-1 1/4 370 (400-1 1/4)			
LNAV MDA	1240-1 448 (500-1)	1240-1 3/8 448 (500-1 3/8)		
CIRCLING	1280-1 488 (500-1)	1480-2 688 (700-2) 1480-2 1/4 688 (700-2 1/4)		

ELEV 792 D TDZE 792



FRENCH LICK, INDIANA
Amdt 1D 19MAY22

38°30'N-86°38'W

FRENCH LICK MUNI (F'R'H)
RNAV (GPS) RWY 8

EC-2, 07 AUG 2025 to 04 SEP 2025

EC-2, 07 AUG 2025 to 04 SEP 2025