

FRENCH LICK, INDIANA

AL-5962 (FAA)

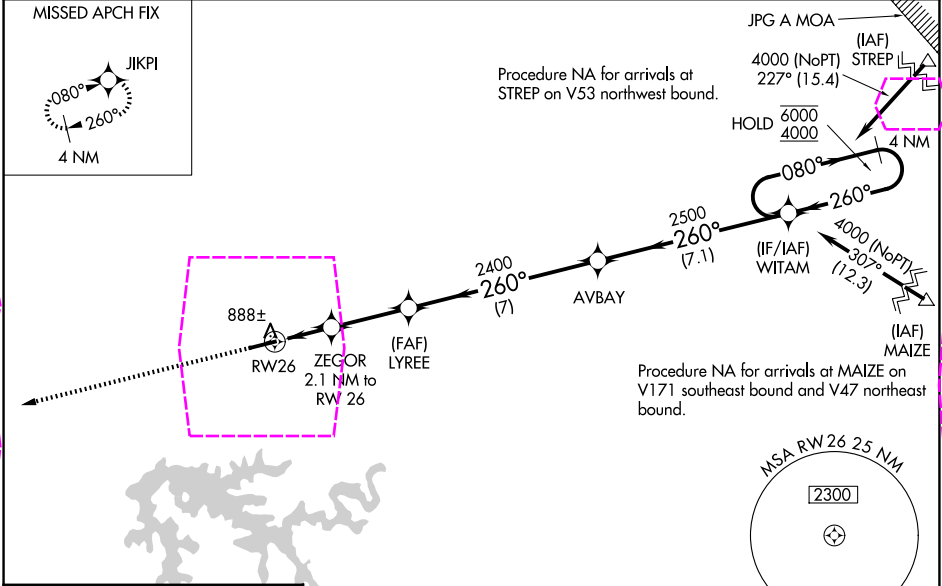
25219

WAAS CH 78420 W26A	APP CRS 260°	Rwy Ldg 5298 TDZE 792 Apt Elev 792
--	------------------------	---

RNAV (GPS) RWY 26

FRENCH LICK MUNI (F.R.H)

RNP APCH. <div><div>▼</div><div>▲</div></div> <p>For uncompensated Baro-VNAV systems, LNAV/VNAV NA below -16°C or above 39°C.</p>		MISSED APPROACH: Climb to 4000 direct JIKPI and hold.
AWOS-3 118.075	LOUISVILLE APP CON 123.675 327.0	UNICOM 122.8 (CTAF) 0



ELEV 792	D	TDZE 792
----------	---	----------

5500 X 100

260°

4000 JIKPI

VGSI and RNAV glidepath not coincident (VGSI Angle 3.00°/TCH 44).

AVBAY

WITAM

4 NM Holding Pattern

080° → 6000

← 260° 4000

GP 3.00° TCH 38

*LNAV only.

ZEGOR 2.1 NM to RW 26

LYREE 2400

*1 NM to RW26

*1480

2400

2500

1 1.1 2.9 NM 7 NM 7.1 NM

CATEGORY	A	B	C	D
LPV DA		1042-1	250 (300-1)	
LNAV/VNAV DA		1077-1	285 (300-1)	
LNAV MDA		1140-1	348 (400-1)	
CIRCLING	1280-1	488 (500-1)	1480-2 688 (700-2)	1480-2¼ 688 (700-2¼)

MIRL Rwy 8-26 0

REIL Rwy 8 and 26

FRENCH LICK, INDIANA
Orig-D 19MAY22

38°30'N-86°38'W

RNAV (GPS) RWY 26

EC-2, 07 AUG 2025 to 04 SEP 2025

EC-2, 07 AUG 2025 to 04 SEP 2025