

COLUMBUS, OHIO


AL-5958 (FAA)

25163

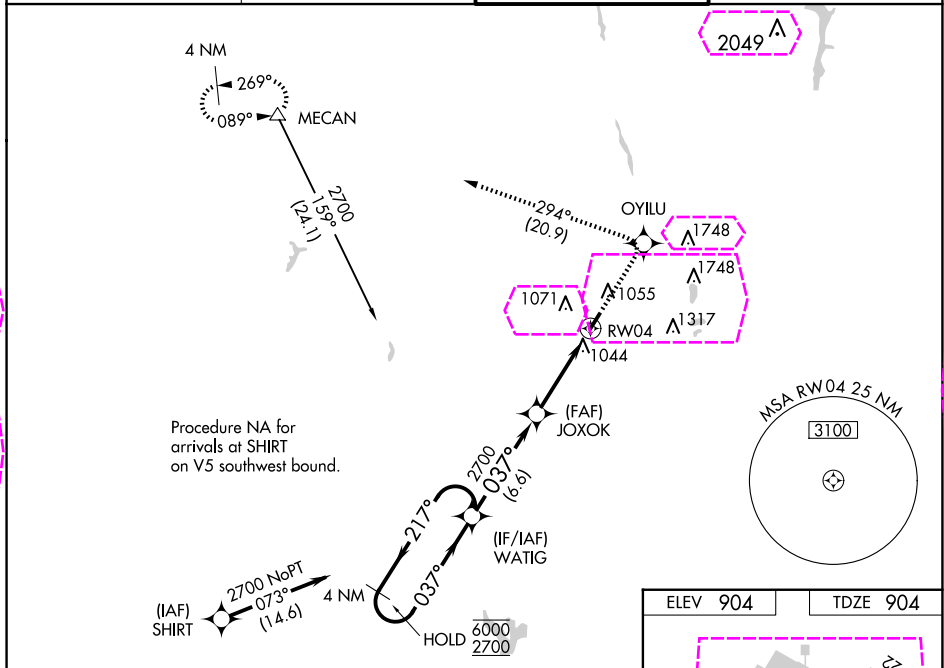
WAAS CH 90505 W04A	APP CRS 037°	Rwy Ldg TDZE 904 Apt Elev 904
--	------------------------	---

RNAV (GPS) RWY 4

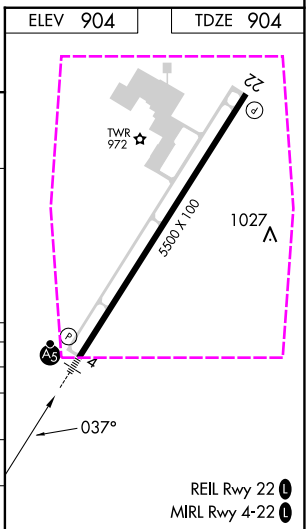
BOLTON FLD (TZR)

RNP APCH. T For uncompensated Baro-VNAV systems, LNAV/VNAV NA below -16°C or above 54°C. For inop ALS, increase LNAV/VNAV all Cats visibility to 1 1/4 SM and LNAV Cats C/D visibility to 1 3/8 SM.	MALS R 	MISSED APPROACH: Climb to 3000 direct OYILU and left turn on track 294° to MECAN and hold.
---	---	---

AWOS-3PT 135.925	COLUMBUS APP CON 134.0 279.6	BOLTON TOWER ★ 128.1 (CTAF) 0	GND CON 121.8
----------------------------	--	---	-------------------------



4 NM Holding Pattern		VGSI and RNAV glidepath not coincident (VGSI Angle 3.00/TCH 25).		3000	OYILU	MECAN
				↑	★	△
				* LNAV only.		
				tr 294°		
				* 1.4 NM to RWY 04		
				RWY 04		
				6.6 NM		
				4 NM		
				1.4		
CATEGORY	A	B	C	D		
LPV DA	1163-1/2		259 (300-1/2)			
LNAV/VNAV DA	1325-1		421 (500-1)			
LNAV MDA	1360-1/2	456 (500-1/2)	1360-7/8	1360-1		
	456 (500-1)	476 (500-1)	456 (500-7/8)	456 (500-1)		
	1380-1	1380-1	1380-1/2	1500-2		
	456 (500-1)	476 (500-1)	476 (500-1/2)	596 (600-2)		



COLUMBUS, OHIO
Orig-B 13SEP18

39°54'N-83°08'W

BOLTON FLD (TZR)
RNAV (GPS) RWY 4

WAAS CH 90505 W04A	APP CRS 037°	Rwy Ldg 5500 TDZE 904 Apt Elev 904
--	------------------------	---

RNAV (GPS) RWY 4
BOLTON FLD (TZR)

RNP APCH.



For uncompensated Baro-VNAV systems, LNAV/VNAV NA below -16°C or above 54°C. For inop ALS, increase LNAV/VNAV all Cats visibility to 1¼ SM and LNAV Cats C/D visibility to 1¾ SM.

MALSR



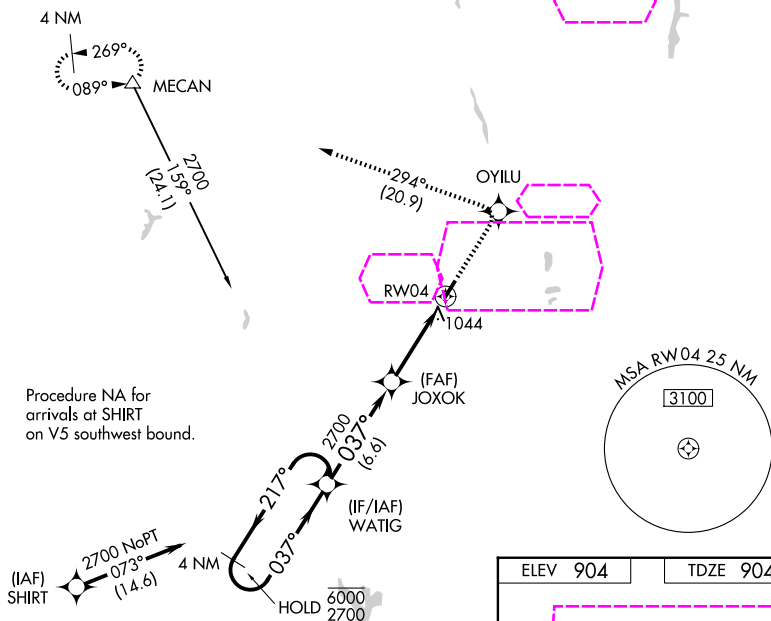
MISSED APPROACH:
Climb to 3000 direct
OYILU and left turn
on track 294° to
MECAN and hold.

AWOS-3PT
135.925

COLUMBUS APP CON
134.0 279.6




BOLTON TOWER ★
128.1 (CTAF) 0

GND CON
121.8

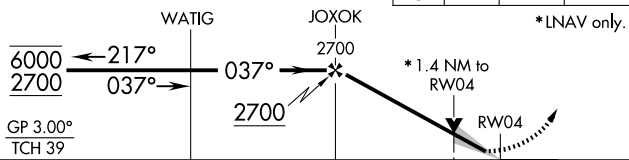


VG
4 NM
Holding Pattern

VGSI and RNAV glidepath not coincident
(VGSI Angle 3.00/TCH 25).

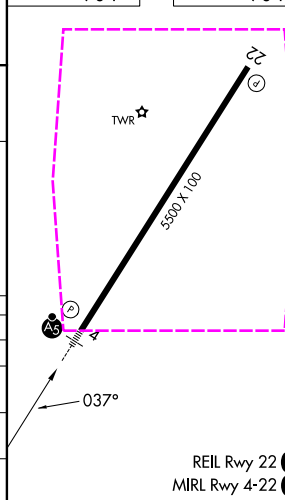
3000 ↑	OYILU 	 tr 294°	MECAN 
-----------	--	---	--

* LNAV only.



CATEGORY		A	B	C	D
LPV	DA	1163-1/2 259 (300-1/2)			
LNAV/ VNAV	DA	1325-1 421 (500-1)			
LNAV	MDA	1360-1/2 456 (500-1/2)	1360-7/8 456 (500-7/8)	1360-1 456 (500-1)	
CIRCLING		1360-1 456 (500-1)	1380-1 476 (500-1)	1380-1 1/2 476 (500-1 1/2)	1500-2 596 (600-2)

ELEV 904		TDZE 904
----------	--	----------



COLUMBUS, OHIO
Orig-B 13SEP18

39°54'N-83°08'W

BOLTON FLD (TZR)

RNAV (GPS) RWY 4

EC-2, 07 AUG 2025 to 04 SEP 2025

EC-2, 07 AUG 2025 to 04 SEP 2025