

COLUMBUS, OHIO

AL-5958 (FAA)

23166

LOM BU <b>230</b>	APP CRS <b>038°</b>	Rwy Idg <b>5500</b>
		TDZE <b>904</b>
		Apt Elev <b>904</b>

**NDB RWY 4**  
BOLTON FLD (TZR)

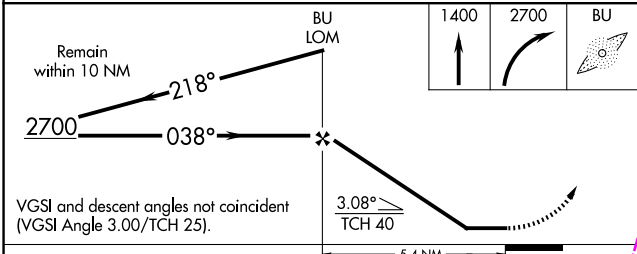
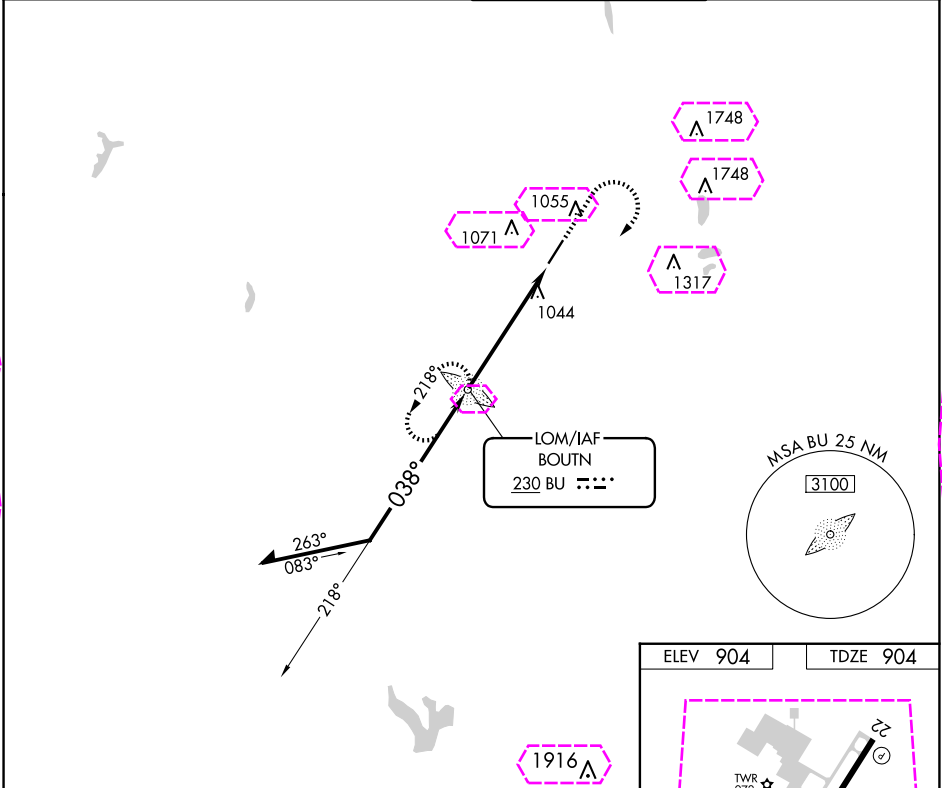
**RADAR** required for procedure entry.

**⚠** For inop ALS, increase S-4 Cats A/B visibility to 1 SM and S-4 Cats C/D visibility to 1½ SM.

**MALSR**

**MISSED APPROACH:** Climb to 1400 then climbing right turn to 2700 direct BU LOM and hold.

AWOS-3PT <b>135.925</b>	COLUMBUS APP CON <b>134.0 279.6</b>	BOLTON TOWER★ <b>128.1 (CTAF)</b>	GND CON <b>121.8</b>
----------------------------	--	--------------------------------------	-------------------------



ELEV 904      TDZE 904

CATEGORY	A	B	C	D
S-4	1400-¾	496 (500-¾)	1400-1 496 (500-1)	1400-1¼ 496 (500-1¼)
<b>CIRCLING</b>	1400-1	496 (500-1)	1400-1½ 496 (500-1½)	1500-2 596 (600-2)

FAF to MAP 5.4 NM

Knots	60	90	120	150	180
Min:Sec	5:24	3:36	2:42	2:10	1:48

COLUMBUS, OHIO  
Amdt 7A 13SEP18

39°54'N-83°08'W

BOLTON FLD (TZR)  
**NDB RWY 4**

EC-2, 10 JUL 2025 to 07 AUG 2025

EC-2, 10 JUL 2025 to 07 AUG 2025

COLUMBUS, OHIO

AL-5958 (FAA)

25219

LOM BU <b>230</b>	APP CRS <b>038°</b>	Rwy Ldg TDZE Apt Elev	<b>5500</b> <b>904</b> <b>904</b>
----------------------	------------------------	-----------------------------	---

NDB RWY 4  
BOLTON FLD (TZR)

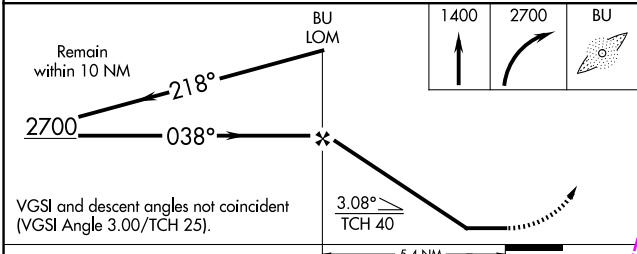
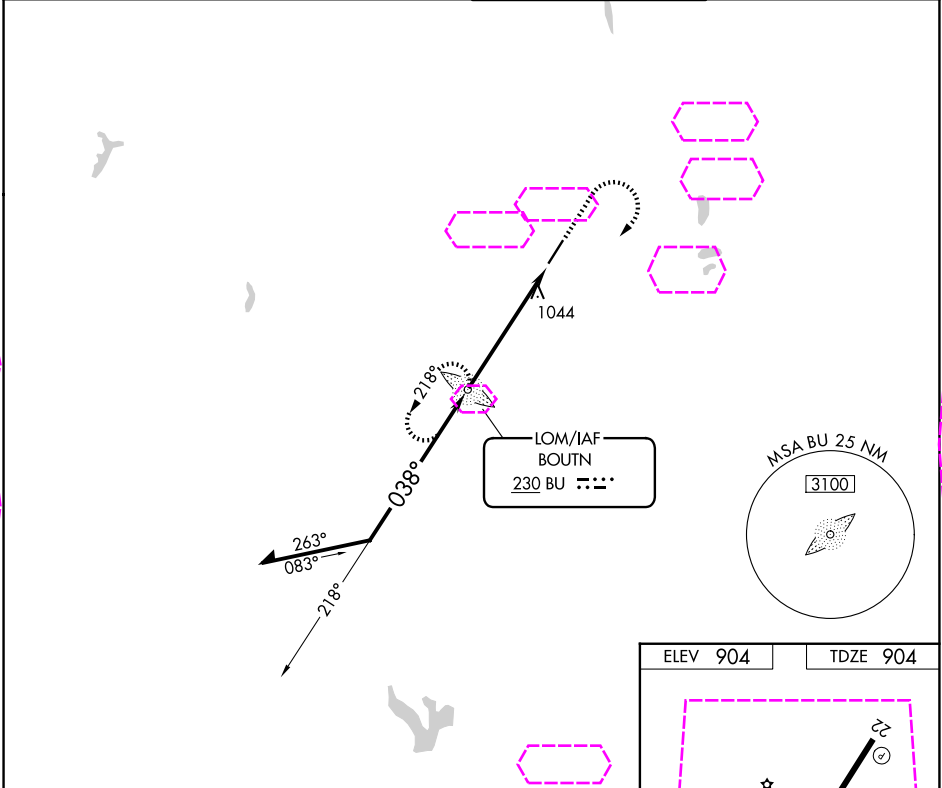
RADAR required for procedure entry.

**▼** For inop ALS, increase S-4 Cats A/B visibility to 1 SM and S-4 Cats C/D visibility to 1½ SM.

MALSR

MISSED APPROACH: Climb to 1400 then climbing right turn to 2700 direct BU LOM and hold.

AWOS-3PT <b>135.925</b>	COLUMBUS APP CON <b>134.0 279.6</b>	BOLTON TOWER★ <b>128.1 (CTAF)</b>	GND CON <b>121.8</b>
----------------------------	--	--------------------------------------	-------------------------



ELEV 904 TDZE 904

CATEGORY	A	B	C	D
S-4	1400-¾ 496 (500-¾)	1400-1 496 (500-1)	1400-1½ 496 (500-1½)	1400-1¼ 496 (500-1¼)
CIRCLING	1400-1 496 (500-1)			

Knots	60	90	120	150	180
Min:Sec	5:24	3:36	2:42	2:10	1:48

FAF to MAP 5.4 NM

REIL Rwy 22  
MIRL Rwy 4-22

COLUMBUS, OHIO  
Amdt 7A 13SEP18

39°54'N-83°08'W

BOLTON FLD (TZR)  
NDB RWY 4

EC-2, 07 AUG 2025 to 04 SEP 2025

EC-2, 07 AUG 2025 to 04 SEP 2025