

COLUMBUS, OHIO

AL-5958 (FAA)

23166

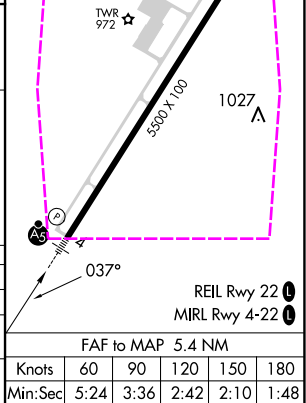
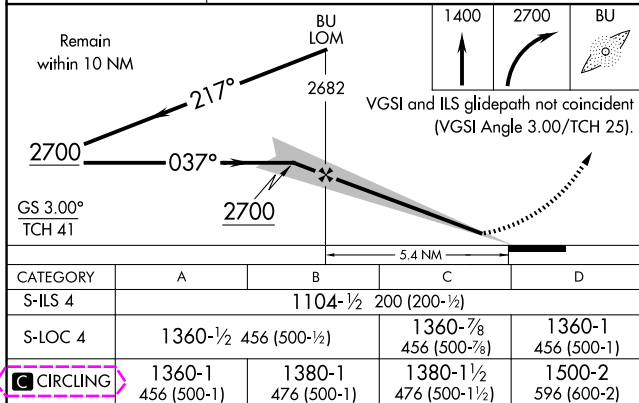
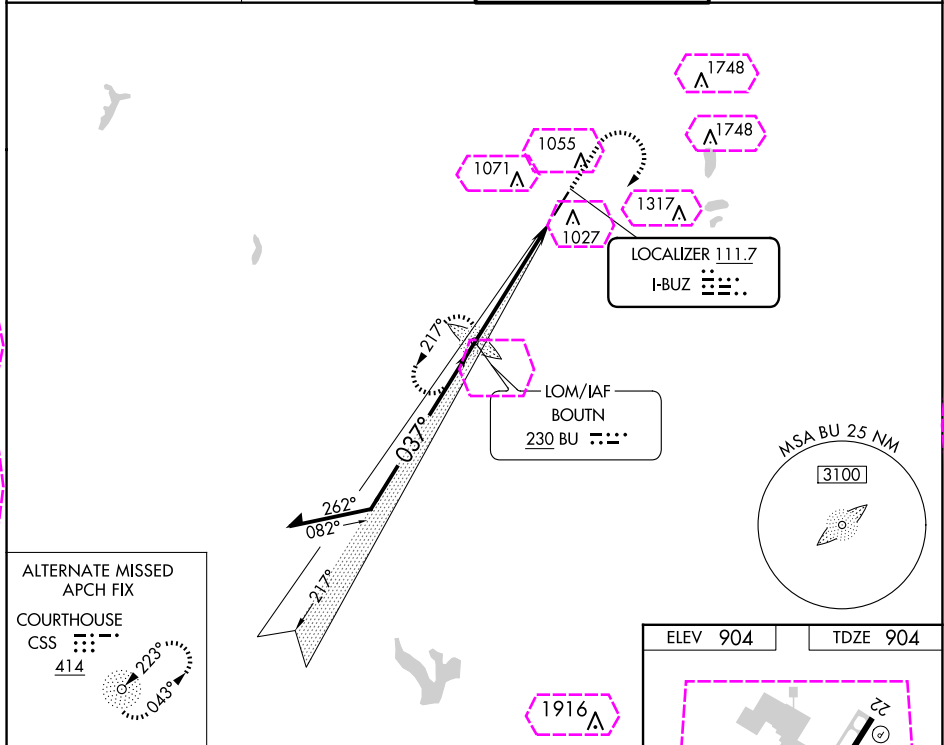
LOC I-BUZ 111.7	APP CRS 037°	Rwy Idg 5500 TDZE 904 Apt Elev 904
---------------------------	------------------------	---

ILS or LOC RWY 4

BOLTON FLD (TZR)

ADF required. RADAR required for procedure entry.	MALSR 	MISSED APPROACH: Climb to 1400 then climbing right turn to 2700 direct BU LOM and hold.
Autopilot coupled approach NA below 1144.		

AWOS-3PT 135.925	COLUMBUS APP CON 134.0 279.6	BOLTON TOWER ★ 128.1 (CTAF)	GND CON 121.8
----------------------------	--	---------------------------------------	-------------------------



COLUMBUS, OHIO
Amdt 5B 05DEC19

39°54'N-83°08'W

BOLTON FLD (TZR)
ILS or LOC RWY 4

EC-2, 10 JUL 2025 to 07 AUG 2025

EC-2, 10 JUL 2025 to 07 AUG 2025

COLUMBUS, OHIO

AL-5958 (FAA)

25219

LOC I-BUZ 111.7	APP CRS 037°	Rwy Ldg 5500 TDZE 904 Apt Elev 904
---------------------------	------------------------	---

ILS or LOC RWY 4

BOLTON FLD (TZR)

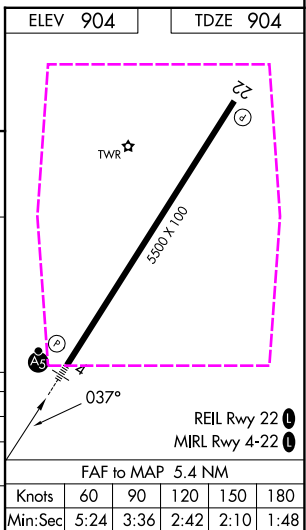
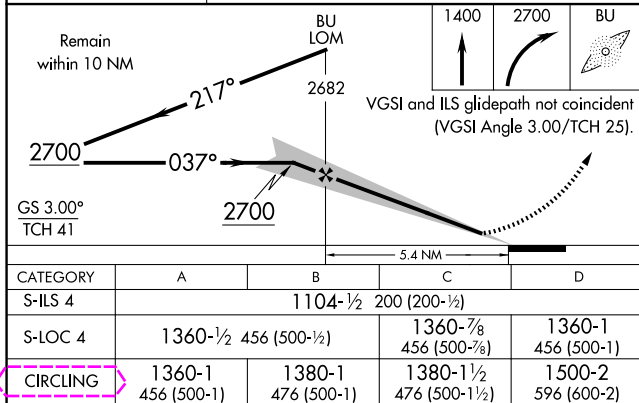
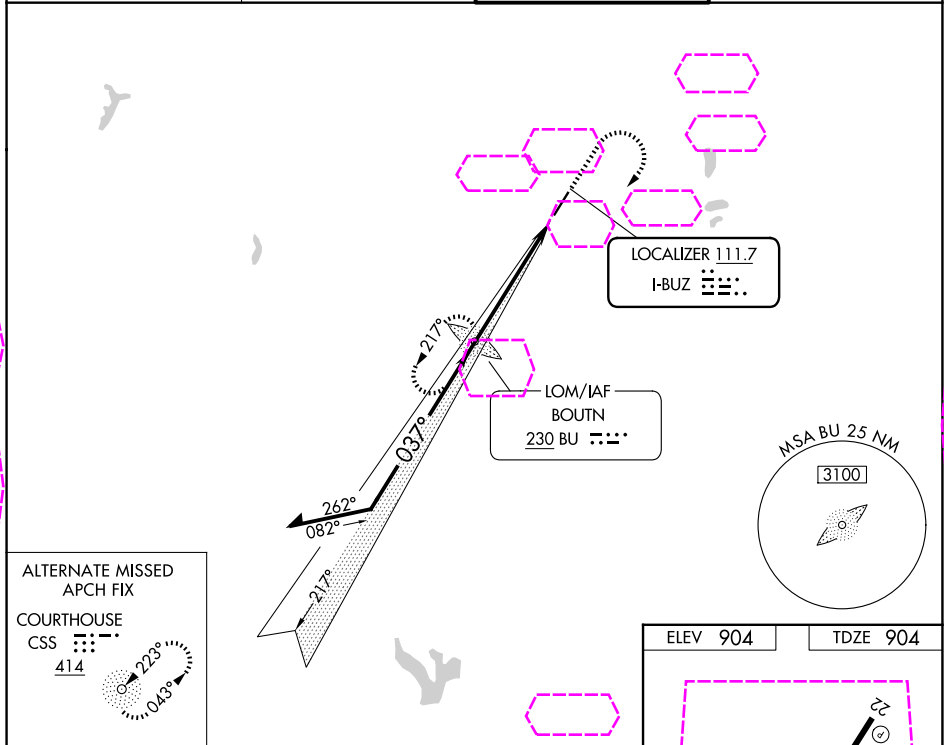
ADF required.
RADAR required for procedure entry.

▼ AutoPilot coupled approach NA below 1144.



MISSED APPROACH: Climb to 1400 then climbing right turn to 2700 direct BU LOM and hold.

AWOS-3PT 135.925	COLUMBUS APP CON 134.0 279.6	BOLTON TOWER ★ 128.1 (CTAF) 0	GND CON 121.8
----------------------------	--	---	-------------------------



COLUMBUS, OHIO
Amdt 5B 05DEC19

39°54'N-83°08'W

BOLTON FLD (TZR)

ILS or LOC RWY 4

EC-2, 07 AUG 2025 to 04 SEP 2025

EC-2, 07 AUG 2025 to 04 SEP 2025