

GRAYLING, MICHIGAN

AL-5957 (FAA)

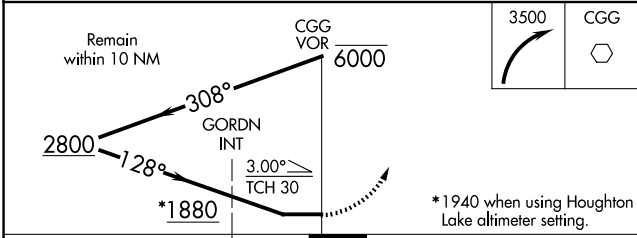
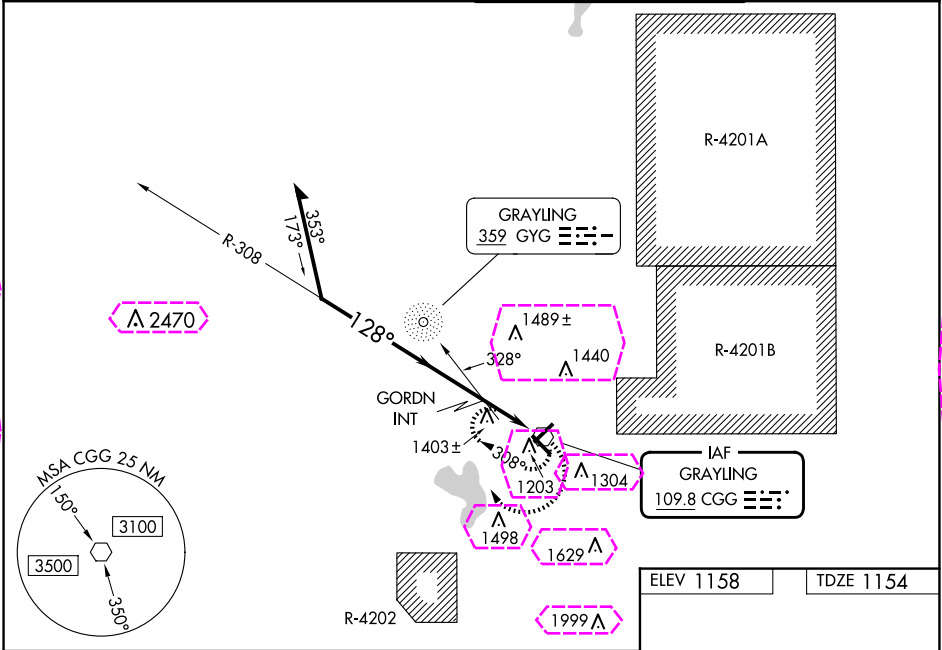
25163

VOR CGG 109.8	APP CRS 128°	Rwy Ldg TDZE 1154 Apt Elev 1158
-------------------------	------------------------	---

VOR RWY 14
GRAYLING AAF (GOV)

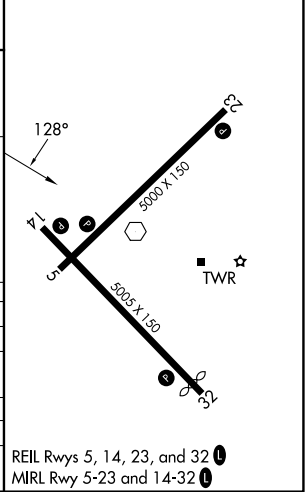
RADAR required for procedure entry.		MISSED APPROACH: Climbing right turn to 3500 in CGG VOR holding pattern.
▼ ▲ NA	Circling Rwy 5, 23, 32 NA at night. Rwy 14 helicopter visibility reduction below ¾ SM NA. When local altimeter setting not received, use Houghton Lake altimeter setting: increase all MDAs 60 feet and S-14 visibility Cat B ¼ SM, Cats C and D ½ SM and Circling Cat B ¼ SM, Cat C ½ SM, Cat D ¼ SM and GORDN fix minimums: S-14 Cats C and D ¼ SM and Circling Cat C and D visibility ¼ SM.	

ATIS 119.075	MINNEAPOLIS CENTER 125.475 269.45	GRAYLING TOWER ★ 126.2 (CTAF) 0	GND CON 121.9
------------------------	---	--	-------------------------



ELEV 1158	TDZE 1154
-----------	-----------

CATEGORY	A	B	C	D
S-14	1880-1	726 (800-1)	1880-2	726 (800-2)
CIRCLING	1880-1	722 (800-1)	1880-2 722 (800-2)	1960-2½ 802 (900-2½)
GORDN FIX MINIMUMS (ADF REQUIRED)				
S-14	1660-1	506 (600-1)	1660-1¾	506 (600-1¾)
CIRCLING	1660-1 502 (600-1)	1720-1 562 (600-1)	1800-1¾ 642 (700-1¾)	1960-2½ 802 (900-2½)



GRAYLING, MICHIGAN

AL-5957 (FAA)

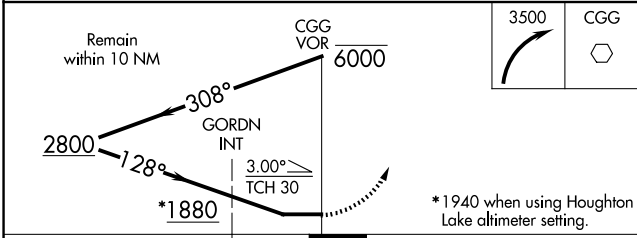
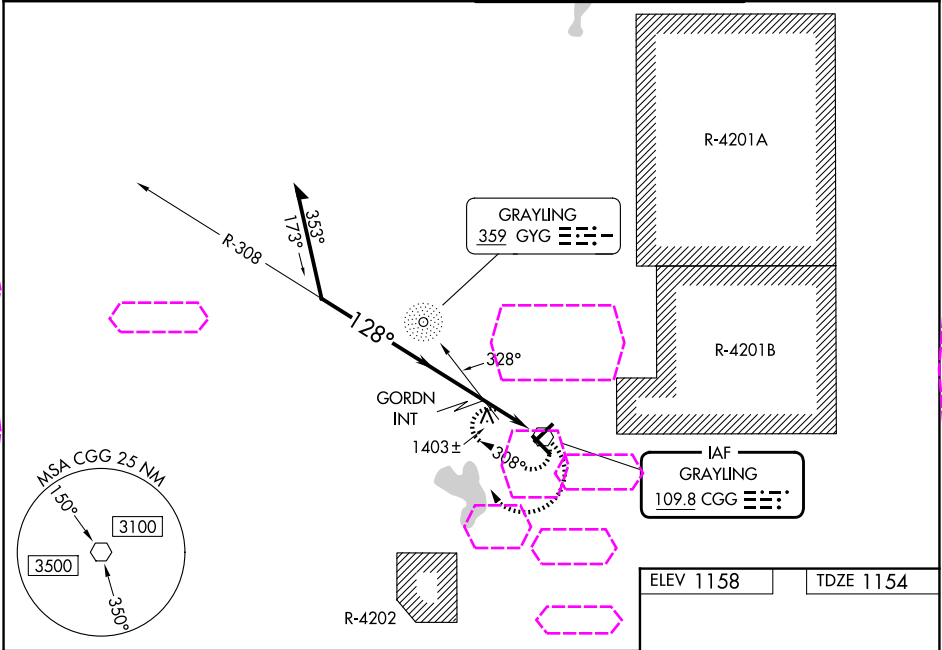
25219

VOR CGG	APP CRS	Rwy Ldg
109.8	128°	5005
		TDZE 1154
		Apt Elev 1158

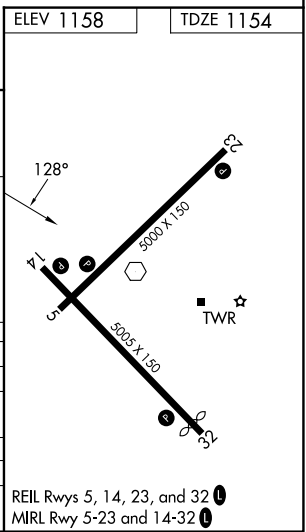
VOR RWY 14
GRAYLING AAF (GOV)

RADAR required for procedure entry.	
▼ NA	Circling Rwy 5, 23, 32 NA at night. Rwy 14 helicopter visibility reduction below ¾ SM NA. When local altimeter setting not received, use Houghton Lake altimeter setting: increase all MDAs 60 feet and S-14 visibility Cat B ¼ SM, Cats C and D ½ SM and Circling Cat B ¼ SM, Cat C ½ SM, Cat D ¼ SM and GORDN fix minimums: S-14 Cats C and D ¼ SM and Circling Cat C and D visibility ¼ SM.
MISSED APPROACH: Climbing right turn to 3500 in CGG VOR holding pattern.	

ATIS 119.075	MINNEAPOLIS CENTER 125.475 269.45	GRAYLING TOWER ★ 124.65 (CTAF) 0	GND CON 121.9
-----------------	--------------------------------------	-------------------------------------	------------------



CATEGORY	A	B	C	D
S-14	1880-1	726 (800-1)	1880-2	726 (800-2)
CIRCLING	1880-1	722 (800-1)	1880-2 722 (800-2)	1960-2½ 802 (900-2½)
GORDN FIX MINIMUMS (ADF REQUIRED)				
S-14	1660-1	506 (600-1)	1660-1¾	506 (600-1¾)
CIRCLING	1660-1 502 (600-1)	1720-1 562 (600-1)	1800-1¾ 642 (700-1¾)	1960-2½ 802 (900-2½)



EC-1, 07 AUG 2025 to 04 SEP 2025

EC-1, 07 AUG 2025 to 04 SEP 2025